



# Peppertree Quarry

---

## Environmental Monitoring Report

December 2019

Date Published: February 2020



## Peppertree Quarry Environmental Monitoring Report

This monitoring report is to satisfy the requirements of Section 66 (6) of the Protection of the Environment and Operations Act 1997, to make available, within 14 days of request, any monitoring data that relates to pollution under an Environment Protection Licence.

The monitoring of pollutants provided in this report is undertaken as per the requirements of Environment Protection Licence 13088 (EPL 13088 – Boral Peppertree Quarry)

This report provides environmental monitoring data for Peppertree Quarry for the period 1<sup>st</sup> to 30th November 2019 and the period 1st to 31st December 2019.

Peppertree Quarry Information	
Premise Details	Boral – Peppertree Quarry
Address	843 Marulan South Road, Marulan
Licensee	Boral Resources (NSW) PTY LTD
EPL N <sup>o</sup>	13088
EPL Location	<a href="http://app.epa.nsw.gov.au/prpoeoapp/ViewPOEOLicence.aspx?DOCID=33060&amp;SYSUID=1&amp;LICID=13088">http://app.epa.nsw.gov.au/prpoeoapp/ViewPOEOLicence.aspx?DOCID=33060&amp;SYSUID=1&amp;LICID=13088</a>

Monitoring data in this report relates to the monitoring undertaken in November and December 2019 for the following environmental pollutants:

- Deposited Dust
- Dust PM10
- Dust TSP
- Noise
- Blasting

## 1. Air Quality

Air Quality Monitoring is conducted as per condition M2 of EPL 13088. The air quality results for the reporting period are tabled below.

### 1.1 Deposited Dust

Deposited Dust (g/m<sup>2</sup>/month) results for November and December 2019.

Sample Period: November and December 2019  
 Date received: 29/1/2020 & 20/12/2019  
 Licensee: Peppertree Quarry  
 Licensee Address: 843 Marulan South Road, Marulan, NSW 2579  
 EPL No: 13088

#### Qualifications related to Dust

Frequency of monitoring - Monthly

Air Emissions Monitoring - Dust Deposition Gauge

<b>Results</b>					
<b>November 2019</b>					
<u>Location</u>	<u>Ash</u> g/m <sup>2</sup> /month	<u>Insoluble solids</u> g/m <sup>2</sup> /month	<u>Soluble Solids</u> g/m <sup>2</sup> /month	<u>Running Annual Average - ASH</u> g/m <sup>2</sup> /month	<u>Running Annual Average Insoluble Solids</u> g/m <sup>2</sup> /month
Monitoring Point 1 (D1)	1.94	2.57	0.67	2.33	4.02
Monitoring Point 2 (D2)	1.42	1.86	0.37	1.75	2.55
Monitoring Point 3 (D3)	2.09	3.05	1.15	1.61	3.05
<b>December 2019</b>					
<u>Location</u>	<u>Ash</u> g/m <sup>2</sup> /month	<u>Insoluble solids</u> g/m <sup>2</sup> /month	<u>Soluble Solids</u> g/m <sup>2</sup> /month	<u>Running Annual Average - ASH</u> g/m <sup>2</sup> /month	<u>Running Annual Average Insoluble Solids</u> g/m <sup>2</sup> /month
Monitoring Point 1 (D1)	2.91	4.05	0.03	1.87	2.94
Monitoring Point 2 (D2)	2.91	3.2	0.05	1.57	2.30
Monitoring Point 3 (D3)	3.93	5.75	1.16	1.65	3.04

The deposited dust data for the reporting period indicates that the deposited dust results range from 1.86 g/m<sup>2</sup>/month of insoluble solids at Monitoring Point 2 to 5.75 g/m<sup>2</sup>/month of insoluble solids at Monitoring Point 3. Levels were higher due to Bushfire smoke and environmental dust brought in from the west.

The running annual average for insoluble solids is slightly above the criteria for monitoring point 1 (4.02 g/m<sup>2</sup>/month) when measured at the gauge location; however it is below the criteria when extrapolated to the boundary as required by the EPL. Todoroski Air Sciences provide a monthly review of interpolated insoluble solid dust levels at and beyond the boundary. These levels are now included in the Historical Tables, from January 2019.

## Peppertree Quarry Environmental Monitoring Report

### Historical results

<u>Location</u>	<u>Ash</u> g/m <sup>2</sup> /month	<u>Insoluble solids</u> g/m <sup>2</sup> /month	<u>Soluble Solids</u> g/m <sup>2</sup> /month	<u>Running Annual Average - ASH</u> g/m <sup>2</sup> /month	<u>Running Annual Average Insoluble Solids</u> g/m <sup>2</sup> /month	<u>Interpolated annual average insoluble solids At the nearest boundary</u> g/m <sup>2</sup> /month
<b>October 2019</b>						
Monitoring Point 1 (D1)	1.52	2.17	1.12	2.41	4.18	1
Monitoring Point 2 (D2)	1.52	1.78	0.85	1.91	2.77	1.6
Monitoring Point 3 (D3)	1.29	1.88	1.29	1.65	3.45	2.0
<b>September 2019</b>						
Monitoring Point 1 (D1)	1.69	2.24	1.02	2.7	4.27	1
Monitoring Point 2 (D2)	0.44	0.97	1.14	2.08	2.95	2
Monitoring Point 3 (D3)	1.15	1.66	2.49	1.97	3.56	2.4
<b>August 2019</b>						
Monitoring Point 1 (D1)	2.08	4.19	2.67	2.88	4.68	1
Monitoring Point 2 (D2)	0.98	1.26	0.58	2.16	3.19	1.8
Monitoring Point 3 (D3)	0.81	1.38	1.62	2.02	3.72	2.3
<b>July 2019</b>						
Monitoring Point 1 (D1)	0.53	1.05	0.05	2.69	4.57	1.1
Monitoring Point 2 (D2)	0.6	0.64	0.28	2.28	3.29	2.1
Monitoring Point 3 (D3)	0.98	1.54	0.19	2.03	4.03	2.5
<b>June 2019</b>						
Monitoring Point 1 (D1)	0.98	1.26	0.49	2.84	4.73	1.1
Monitoring Point 2 (D2)	1.82	3.94	0.52	2.41	3.47	2.2
Monitoring Point 3 (D3)	0.76	2.66	0.74	2.2	4.19	2.7
<b>May 2019</b>						
Monitoring Point 1 (D1)	1.19	1.2	0.89	3.16	5.35	1.2
Monitoring Point 2 (D2)	0.96	0.97	1.14	2.45	3.41	2.2
Monitoring Point 3 (D3)	0.39	0.46	2.26	2.32	4.27	2.8
<b>April 2019</b>						

## Peppertree Quarry Environmental Monitoring Report

Monitoring Point 1 (D1)	1.12	1.82	0.26	3.45	5.95	1.3
Monitoring Point 2 (D2)	0.82	1.13	0.54	2.52	3.55	2.3
Monitoring Point 3 (D3)	0.56	0.77	0.19	2.45	4.51	3.0
<b>March 2019</b>						
Monitoring Point 1 (D1)	1.24	1.41	11.11	4.11	7.43	1.5
Monitoring Point 2 (D2)	0.88	1.17	9.80	2.71	3.86	2.4
Monitoring Point 3 (D3)	1.87	3.63	4.93	2.59	4.77	3.1
<b>February 2019</b>						
Monitoring Point 1 (D1)	2.03	3.66	1.52	4.27	7.75	1.8
Monitoring Point 2 (D2)	3.22	4.68	2.02	2.90	4.14	2.6
Monitoring Point 3 (D3)	2.53	4.56	1.86	2.61	4.79	3.1
<b>January 2019</b>						
Monitoring Point 1 (D1)	5.15	9.68	5.09	4.40	8.01	1.9
Monitoring Point 2 (D2)	3.97	5.95	1.35	1.35	4.04	2.6
Monitoring Point 3 (D3)	3.49	9.14	3.21	3.21	4.93	3.1

## Peppertree Quarry Environmental Monitoring Report

<u>Location</u>	<u>Ash</u> g/m <sup>2</sup> /month	<u>Insoluble solids</u> g/m <sup>2</sup> /month	<u>Soluble Solids</u> g/m <sup>2</sup> /month	<u>Running Annual Average - ASH</u> g/m <sup>2</sup> /month	<u>Running Annual Average Insoluble Solids</u> g/m <sup>2</sup> /month
<b>December 2018</b>					
Monitoring Point 1 (D1)	8.45	17.03	5.42	4.31	7.81
Monitoring Point 2 (D2)	4.33	6.25	0.93	0.93	3.89
Monitoring Point 3 (D3)	3.42	5.84	2.37	2.37	4.54
<b>November 2018</b>					
Monitoring Point 1 (D1)	2.88	4.49	1.77	3.96	6.91
Monitoring Point 2 (D2)	3.35	4.47	0.72	0.72	3.57
Monitoring Point 3 (D3)	2.56	7.82	2.16	2.16	4.53
<b>October 2018</b>					
Monitoring Point 1 (D1)	2.31	3.22	2.15	4.44	8.88
Monitoring Point 2 (D2)	2.84	3.98	2.27	2.51	3.51
Monitoring Point 3 (D3)	1.74	3.26	2.70	2.34	4.12
<b>September 2018</b>					
Monitoring Point 1 (D1)	4.32	7.13	4.07	4.51	9.11
Monitoring Point 2 (D2)	2.62	1.15	3.82	2.21	3.52
Monitoring Point 3 (D3)	1.99	3.52	2.2	2.05	4.10
<b>August 2018</b>					
Monitoring Point 1 (D1)	2.03	2.9	1.38	4.30	9.11
Monitoring Point 2 (D2)	1.89	2.46	0.62	2.19	3.43
Monitoring Point 3 (D3)	4.04	5.19	2.77	2.05	4.09
<b>July 2018</b>					
Monitoring Point 1 (D1)	2.35	2.98	2.01	4.27	8.68
Monitoring Point 2 (D2)	2.19	2.77	1.31	2.30	3.38
Monitoring Point 3 (D3)	2.99	3.43	0.98	2.16	3.82
<b>June 2018</b>					
Monitoring Point 1 (D1)	4.90	8.63	9.57	4.27	8.77
Monitoring Point 2 (D2)	2.37	3.21	0.36	2.31	3.33
Monitoring Point 3 (D3)	2.24	3.61	2.21	2.09	3.89
<b>May 2018</b>					
Monitoring Point 1 (D1)	4.58	8.41	4.57	4.11	8.39

## Peppertree Quarry Environmental Monitoring Report

Monitoring Point 2 (D2)	1.73	2.7	1.2	2.34	3.4
Monitoring Point 3 (D3)	1.94	3.35	2.59	2.07	3.88
<b>April 2018</b>					
Monitoring Point 1 (D1)	9.07	19.58	8.93	3.86	7.88
Monitoring Point 2 (D2)	3.18	4.81	0.88	2.35	3.39
Monitoring Point 3 (D3)	2.28	3.92	2.28	1.99	3.75
<b>March 2018</b>					
Monitoring Point 1 (D1)	3.22	5.24	5.13	3.29	6.51
Monitoring Point 2 (D2)	3.12	4.54	3.29	2.29	3.27
Monitoring Point 3 (D3)	2.11	3.82	2.95	1.96	3.80
<b>February 2018</b>					
Monitoring Point 1 (D1)	3.59	6.83	2.72	3.17	6.24
Monitoring Point 2 (D2)	2.51	3.52	0.53	2.13	2.99
Monitoring Point 3 (D3)	2.35	6.3	3.42	1.94	3.84
<b>January 2018</b>					
Monitoring Point 1 (D1)	4.07	7.27	5.74	3.09	6.06
Monitoring Point 2 (D2)	3.28	4.09	2.20	2.15	3.05
Monitoring Point 3 (D3)	2.36	4.36	3.45	1.93	3.92
<b>December 2017</b>					
Monitoring Point 1 (D1)	4.2	6.21	4.1	3.00	5.88
Monitoring Point 2 (D2)	1.95	2.47	1.01	2.19	3.21
Monitoring Point 3 (D3)	2.42	5.77	3.88	2.13	4.82
<b>November 2017</b>					
Monitoring Point 1(D1)	8.59	28.18	97.33	2.88	5.65
Monitoring Point 2 (D2)	2.46	3.71	1.49	2.18	3.33
Monitoring Point 3 (D3)	1.56	2.89	1.25	2.14	5.06
<b>October 2017</b>					
Monitoring Point 1	3.2	5.94	4.32	2.02	3.19
Monitoring Point 2	2.73	4.18	2.09	2.05	3.42
Monitoring Point 3	1.78	3.01	2.35	2.10	4.95
<b>September 2017</b>					
Monitoring Point 1	1.82	2.76	0.65	1.88	2.91
Monitoring Point 2	1.64	2.69	1.38	1.91	3.25
Monitoring Point 3	1.97	3.37	2.23	2.05	4.94
<b>August 2017</b>					
Monitoring Point 1	1.62	2.17	0.85	1.83	2.85

## Peppertree Quarry Environmental Monitoring Report

Monitoring Point 2	1.16	1.82	0.80	1.87	3.21
Monitoring Point 3	1.35	2.05	1.5	1.97	4.84
<b>July 2017</b>					
Monitoring Point 1	2.36	3.99	1.65	1.86	2.88
Monitoring Point 2	1.61	2.23	0.54	1.87	3.24
Monitoring Point 3	2.72	4.21	1.1	1.95	4.85
<b>June 2017</b>					
Monitoring Point 1	3.01	4.09	0.9	1.88	3
Monitoring Point 2	2.73	4.02	0.72	1.85	3.26
Monitoring Point 3	2.04	3.53	2.35	1.84	4.74
<b>May 2017</b>					
Monitoring Point 1	1.6	2.28	0.58	1.81	2.97
Monitoring Point 2	1.83	2.62	0.96	1.73	3.1
Monitoring Point 3	0.9	1.81	1.49	1.74	4.56
<b>April 2017</b>					
Monitoring Point 1	2.14	3.11	1.76	1.79	2.91
Monitoring Point 2	2.46	3.30	1.33	1.62	2.94
Monitoring Point 3	1.9	4.42	2.14	1.75	4.55
<b>March 2017</b>					
Monitoring Point 1	1.79	2.09	2.77	1.78	2.85
Monitoring Point 2	1.20	1.28	1.80	1.57	2.86
Monitoring Point 3	1.88	4.38	3.24	1.69	4.36
<b>February 2017</b>					
Monitoring Point 1	2.62	4.61	4.14	1.73	2.82
Monitoring Point 2	2.70	4.17	0.83	1.59	2.94
Monitoring Point 3	2.22	7.21	4.17	1.63	4.33
<b>January 2017</b>					
Monitoring Point 1	1.33	2.79	2.33	1.64	2.58
Monitoring Point 2	2.33	4.89	2.80	1.49	2.77
Monitoring Point 3	4.34	14.17	5.45	1.59	4.2
<b>December 2016</b>					
Monitoring Point 1	1.27	2.49	1.33	1.58	2.43
Monitoring Point 2	2.04	4.98	1.91	1.41	2.53
Monitoring Point 3	2.29	8.36	4.41	1.35	3.5
<b>November 2016</b>					
Monitoring Point 1	1.46	1.98	1.56	1.64	2.49
Monitoring Point 2	2.20	4.81	3.05	1.45	2.41
Monitoring Point 3	1.78	2.88	2.37	1.37	4.02
<b>October 2016</b>					
Monitoring Point 1	1.56	2.56		1.61	2.57
Monitoring Point 2	1.00	2.21	0.80	1.38	2.21
Monitoring Point 3	1.18	2.94	1.21	1.30	4.13
<b>September 2016</b>					
Monitoring Point 1	1.24	2.06	0.4	2.32	4.24
Monitoring Point 2	1.13	2.24	1.01	1.49	2.33
Monitoring Point 3	1.03	2.06	1.32	1.33	4.13
<b>August 2016</b>					
Monitoring Point 1	1.94	2.5	0.12	2.33	4.19
Monitoring Point 2	1.21	2.11	1.26	1.47	2.23
Monitoring Point 3	1.13	2.23	1.34	1.27	4.01
<b>July 2016</b>					
Monitoring Point 1	2.56	5.41	4.2	2.27	4.14
Monitoring Point 2	1.31	2.49	0.50	1.43	2.12



## Peppertree Quarry Environmental Monitoring Report

Monitoring Point 3	1.38	2.88	0.47	1.30	4.05
<b>June 2016</b>					
Monitoring Point 1	2.23	3.81	1.41	3.07	5.22
Monitoring Point 2	1.37	2.05	0.95	1.42	2.07
Monitoring Point 3	0.9	1.37	1.27	1.31	4.04
<b>May 2016</b>					
Monitoring Point 1	1.37	1.46	0.49	3.02	5.08
Monitoring Point 2	0.43	0.69	0.28	1.52	2.25
Monitoring Point 3	0.93	1.7	0.61	1.32	4.10
<b>April 2016</b>					
Monitoring Point 1	2.03	2.41	0.45	3.86	6.94
Monitoring Point 2	1.86	2.35	0.85	1.63	2.43
Monitoring Point 3	1.16	2.14	1.44	1.34	4.14
<b>March 2016</b>					
Monitoring Point 1	1.09	1.72	0.18	3.82	6.97
Monitoring Point 2	1.51	2.26	0.15	1.57	2.44
Monitoring Point 3	1.16	4.06	2.57	1.33	4.25
<b>February 2016</b>					
Monitoring Point 1	1.56	1.77	3.53	3.97	7.17
Monitoring Point 2	1.54	2.15	3.32	1.62	2.53
Monitoring Point 3	1.8	5.66	5.45	1.36	4.21
<b>January 2016</b>					
Monitoring Point 1	0.61	1.01	0.5	4.01	7.3
Monitoring Point 2	1.36	1.98	0.55	1.63	2.53
Monitoring Point 3	1.49	5.71	3.29	1.34	4.03
<b>December 2015</b>					
Monitoring Point 1	2.04	3.17	3.95	4.14	7.62
Monitoring Point 2	2.52	3.56	1.75	1.65	2.57
Monitoring Point 3	2.44	14.58	11.38	1.32	3.94
<b>November 2015</b>					
Monitoring Point 1	1.14	2.94	0.46	4.21	7.72
Monitoring Point 2	1.30	2.41	0.59	1.60	2.44
Monitoring Point 3	1.05	4.21	1.29	1.27	3.02
<b>October 2015</b>					
Monitoring Point 1	10.06	22.62	9.01	4.28	7.68
Monitoring Point 2	2.33	3.62	0.94	1.51	2.29
Monitoring Point 3	1.48	2.96	2.03	1.27	3.07
<b>September 2015</b>					
Monitoring Point 1	1.38	1.5	9.25	3.57	6.08
Monitoring Point 2	0.87	1.04	2.61	1.45	2.2
Monitoring Point 3	0.26	0.59	3.72	1.27	3.13
<b>August 2015</b>					
Monitoring Point 1	1.16	1.9	1.02	3.55	6.10
Monitoring Point 2	0.80	0.84	0.74	1.45	2.2
Monitoring Point 3	1.51	2.75	0.32	1.33	3.21
<b>July 2015</b>					
Monitoring Point 1	12.2	18.27	5.41	3.61	6.18
Monitoring Point 2	1.15	1.88	0.54	1.47	2.26
Monitoring Point 3	1.48	2.72	0.8	1.29	3.15
<b>June 2015</b>					
Monitoring Point 1	1.57	2.16	2.28	2.70	4.77
Monitoring Point 2	2.57	4.22	4.55	1.46	2.23
Monitoring Point 3	1.03	2.12	4.28	1.31	3.12

## Peppertree Quarry Environmental Monitoring Report

<b>May 2015</b>					
Monitoring Point 1	11.52	23.81	8.13	2.65	4.74
Monitoring Point 2	1.70	2.87	0.93	1.32	1.96
Monitoring Point 3	1.25	2.15	1.31	1.28	3.02
<b>April 2015</b>					
Monitoring Point 1	1.49	2.76	1.05	1.77	2.98
Monitoring Point 2	1.17	2.43	1.95	1.25	1.83
Monitoring Point 3	1	3.53	1.78	1.28	3.06
<b>March 2015</b>					
Monitoring Point 1	2.96	4.17	2.73	1.84	3.26
Monitoring Point 2	2.13	3.36	0.44	1.25	1.81
Monitoring Point 3	1.56	3.56	2.33	1.26	2.99
<b>February 2015</b>					
Monitoring Point 1	2.01	3.29	3.67	1.86	3.73
Monitoring Point 2	1.71	2.12	1.81	1.15	1.61
Monitoring Point 3	1.52	3.42	4.05	1.22	3.03
<b>January 2015</b>					
Monitoring Point 1	2.13	4.88	3.99	1.93	4.24
Monitoring Point 2	1.57	2.54	0.23	1.18	1.72
Monitoring Point 3	1.27	4.65	3.32	1.20	2.99

## Peppertree Quarry Environmental Monitoring Report

### 1.2 PM10

#### PM10 ( $\mu\text{g}/\text{m}^3$ ) results for the month of November and December 2019

Sample Period: November and December 2019  
 Date Received: 18/12/19 & 15/1/2020  
 Peppertree  
 Licensee: Quarry  
 Licensee  
 Address: 843 Marulan south Road, Marulan NSW 2579  
 EPL No: 13088

#### **Qualifications related to Dust:**

\* Air Emissions Monitoring - High Volume Air Sampler

Sampling Frequency is collection of samples over a 24hr period, every 6 days. Protocols are contained in the Air Quality Management Plan found on this website.

Twenty Four (24) hour criteria is  $50 \mu\text{g}/\text{m}^3$ .

Annual average criteria is 30

<b>Results</b>						
<u>Location</u>	<u>Date</u>	<u>Pollutant</u>	<u>Measurement</u>	<u>Rolling Annual Average</u>	<u>Limit annual average</u>	<u>Unit</u>
Monitoring Point 2	1/1/2020	PM10	331.13	29.38	30	$\mu\text{g}/\text{m}^3$
Monitoring Point 2	26/12/2019	PM10	115.38	24.64	30	$\mu\text{g}/\text{m}^3$
Monitoring Point 2	20/12/2019	PM10	124.15	23.04	30	$\mu\text{g}/\text{m}^3$
Monitoring Point 2	14/12/2019	PM10	62.69	21.34	30	$\mu\text{g}/\text{m}^3$
Monitoring Point 2	8/12/2019	PM10	25.80	20.55	30	$\mu\text{g}/\text{m}^3$
Monitoring Point 2	2/12/2019	PM10	11.45	20.74	30	$\mu\text{g}/\text{m}^3$
Monitoring Point 2	26/11/2019	PM10	81.48	20.8	30	$\mu\text{g}/\text{m}^3$
Monitoring Point 2	20/11/2019	PM10	30.78	19.61	30	$\mu\text{g}/\text{m}^3$
Monitoring Point 2	14/11/2019	PM10	11.23	19.69	30	$\mu\text{g}/\text{m}^3$

The PM10 data indicates that during the sampling period the rolling annual average data range was between  $19.69 \mu\text{g}/\text{m}^3$  and  $29.38 \mu\text{g}/\text{m}^3$ . Twenty four hour results ranged from 11.23 and  $331.13 \mu\text{g}/\text{m}^3$ . The majority of the samples were dark brown in colour and impacted by bush fire smoke and windblown dust from the west. The annual rolling average results continue to be below the long term criteria.

## Peppertree Quarry Environmental Monitoring Report

### Historical results

Location	Date	Pollutant	Measurement	Rolling Annual Average	Limit annual average	Unit
<b>October 2019</b>						
Monitoring Point 2	8/11/2019	PM10	11.19	20.93	30	µg/m <sup>3</sup>
Monitoring Point 2	2/11/2019	PM10	9.95	21.38	30	µg/m <sup>3</sup>
Monitoring Point 2	27/10/2019	PM10	17.23	21.81	30	µg/m <sup>3</sup>
Monitoring Point 2	21/10/2019	M10	12.69	21.84	30	µg/m <sup>3</sup>
Monitoring Point 2	15/10/2019	PM10	40.13	21.93	30	µg/m <sup>3</sup>
<b>August / September 2019</b>						
Monitoring Point 2	9/10/2019	PM10	2.74	21.35	30	µg/m <sup>3</sup>
Monitoring Point 2	3/10/2019	PM10	31.96	21.52	30	µg/m <sup>3</sup>
Monitoring Point 2	27/9/2019	PM10	11.66	21.84	30	µg/m <sup>3</sup>
Monitoring Point 2	21/9/2019	PM10	53	21.8	30	µg/m <sup>3</sup>
Monitoring Point 2	15/9/2019	PM10	14.47	21.36	30	µg/m <sup>3</sup>
Monitoring Point 2	9/9/2019	PM10	2.16	21.43	30	µg/m <sup>3</sup>
Monitoring Point 2	3/9/2019	PM10	19.79	21.51	30	µg/m <sup>3</sup>
Monitoring Point 2	28/8/2019	PM10	4.38	21.72	30	µg/m <sup>3</sup>
Monitoring Point 2	22/8/2019	M10	2.67	22.04	30	µg/m <sup>3</sup>
Monitoring Point 2	16/8/2019	PM10	95.05	22.03	30	µg/m <sup>3</sup>
<b>July 2019</b>						
Monitoring Point 2	10/8/2019	PM10	3.25	20.50	30	µg/m <sup>3</sup>
Monitoring Point 2	4/8/2019	PM10	4.72	20.69	30	µg/m <sup>3</sup>
Monitoring Point 2	29/7/2019	PM10	2.18	21.26	30	µg/m <sup>3</sup>
Monitoring Point 2	23/7/2019	PM10	5.36	21.45	30	µg/m <sup>3</sup>
Monitoring Point 2	17/7/2019	PM10	0.46	21.42	30	µg/m <sup>3</sup>
Monitoring Point 2	11/7/2019	PM10	0.23	21.49	30	µg/m <sup>3</sup>
<b>June 2019</b>						
Monitoring Point 2	5/7/2019	PM10	4.08	21.5	30	µg/m <sup>3</sup>
Monitoring Point 2	29/6/2019	PM10	3.96	21.66	30	µg/m <sup>3</sup>
Monitoring Point 2	23/6/2019	PM10	3.46	21.78	30	µg/m <sup>3</sup>
Monitoring Point 2	17/6/2019	PM10	0.07	21.83	30	µg/m <sup>3</sup>
<b>May 2019</b>						
Monitoring Point 2	11/6/19	PM10	16.75	21.84	30	µg/m <sup>3</sup>
Monitoring Point 2	5/6/19	PM10	3.36	21.58	30	µg/m <sup>3</sup>
Monitoring Point 2	30/5/19	PM10	1.42	21.72	30	µg/m <sup>3</sup>
Monitoring Point 2	24/5/19	PM10	11.27	22.52	30	µg/m <sup>3</sup>
Monitoring Point 2	18/5/19	PM10	19.92	22.66	30	µg/m <sup>3</sup>
Monitoring Point 2	12/5/19	PM10	1.18	22.61	30	µg/m <sup>3</sup>
<b>April 2019</b>						
Monitoring Point 2	6/5/2019	PM10	6.74	22.62	30	µg/m <sup>3</sup>
Monitoring Point 2	30/4/2019	PM10	49.05	22.54	30	µg/m <sup>3</sup>
Monitoring Point 2	24/4/2019	PM10	24.74	21.92	30	µg/m <sup>3</sup>
Monitoring Point 2	18/5/2019	PM10	21.05	22.78	30	µg/m <sup>3</sup>
Monitoring Point 2	12/4/2019	PM10	33.58	23.27	30	µg/m <sup>3</sup>
<b>March 2019</b>						
Monitoring Point 2	6/4/2019	PM10	12.81	23.36	30	µg/m <sup>3</sup>
Monitoring Point 2	31/3/2019	PM10	0.34	24.13	30	µg/m <sup>3</sup>
Monitoring Point 2	25/3/2019	PM10	4.58	24.57	30	µg/m <sup>3</sup>
Monitoring Point 2	19/3/2019	PM10	6.86	25.15	30	µg/m <sup>3</sup>
Monitoring Point 2	13/3/2019	PM10	53.22	25.27	30	µg/m <sup>3</sup>
Monitoring Point 2	7/3/2019	PM10	56.73	24.67	30	µg/m <sup>3</sup>

## Peppertree Quarry Environmental Monitoring Report

<b>February 2019</b>						
Monitoring Point 2	1/3/19	PM10	18.3	24.13	30	µg/m <sup>3</sup>
Monitoring Point 2	23/2/19	PM10	76.2	24.03	30	µg/m <sup>3</sup>
Monitoring Point 2	17/2/19	PM10	32.06	23.38	30	µg/m <sup>3</sup>
Monitoring Point 2	13/2/19	PM10	20.23	23.12	30	µg/m <sup>3</sup>
Monitoring Point 2	11/2/19	PM10	9.6	23.45	30	µg/m <sup>3</sup>
Monitoring Point 2	7/2/19	PM10	no sample	23.71	30	µg/m <sup>3</sup>
Monitoring Point 2	5/2/19	PM10	27.77	23.71	30	µg/m <sup>3</sup>
<b>January 2019</b>						
Monitoring Point 2	30/1/19	PM10	39.3	23.96	30	µg/m <sup>3</sup>
Monitoring Point 2	24/1/19	PM10	no sample	25.21	30	µg/m <sup>3</sup>
Monitoring Point 2	18/1/19	PM10	no sample	25.21	30	µg/m <sup>3</sup>
Monitoring Point 2	15/1/19	PM10	40.3	25.21	30	µg/m <sup>3</sup>
Monitoring Point 2	12/1/19	PM10	18.21	25.39	30	µg/m <sup>3</sup>
Monitoring Point 2	6/1/19	PM10	no sample	25.73	30	µg/m <sup>3</sup>
<b>December 2018</b>						
Monitoring Point 2	31/12/18	PM10	46.78	25.73	30	µg/m <sup>3</sup>
Monitoring Point 2	25/12/18	PM10	99.62	25.69	30	µg/m <sup>3</sup>
Monitoring Point 2	19/12/18	PM10	22.41	25.65	30	µg/m <sup>3</sup>
Monitoring Point 2	13/12/18	PM10	15.32	26.62	30	µg/m <sup>3</sup>
Monitoring Point 2	7/12/18	PM10	37.08	26.92	30	µg/m <sup>3</sup>
Monitoring Point 2	1/12/18	PM10	14.75	26.69	30	µg/m <sup>3</sup>
<b>November 2018</b>						
Monitoring Point 2	25/11/18	PM10	10.23	26.76	30	µg/m <sup>3</sup>
Monitoring Point 2	19/11/18	PM10	35.31	26.92	30	µg/m <sup>3</sup>
Monitoring Point 2	13/11/18	PM10	86.01	27.03	30	µg/m <sup>3</sup>
Monitoring Point 2	7/11/18	PM10	38.23	25.70	30	µg/m <sup>3</sup>
Monitoring Point 2	1/11/18	PM10	35.33	25.16	30	µg/m <sup>3</sup>
<b>October 2018</b>						
Monitoring Point 2	26/10/18	PM10	19.43	24.98	30	µg/m <sup>3</sup>
Monitoring Point 2	20/10/18	PM10	17.74	25.08	30	µg/m <sup>3</sup>
Monitoring Point 2	14/10/18	PM10	5.39	25.21	30	µg/m <sup>3</sup>
Monitoring Point 2	8/10/18	PM10	13.00	25.42	30	µg/m <sup>3</sup>
Monitoring Point 2	2/10/18	PM10	50.98	25.38	30	µg/m <sup>3</sup>
<b>September 2018</b>						
Monitoring Point 2	26/9/18	PM10	9.35	24.92	30	µg/m <sup>3</sup>
Monitoring Point 2	20/9/18	PM10	27.02	24.88	30	µg/m <sup>3</sup>
Monitoring Point 2	15/9/18	PM10	18.30	24.84	30	µg/m <sup>3</sup>
Monitoring Point 2	8/9/18	PM10	7.00	24.61	30	µg/m <sup>3</sup>
Monitoring Point 2	4/9/18	PM10	32.76	24.94	30	µg/m <sup>3</sup>
<b>August 2018</b>						
Monitoring Point 2	27/8/18	PM10	23.14	24.65	30	µg/m <sup>3</sup>
Monitoring Point 2	21/8/18	PM10	1.99	24.69	30	µg/m <sup>3</sup>
Monitoring Point 2	15/8/18	PM10	3.25	25.12	30	µg/m <sup>3</sup>
Monitoring Point 2	9/8/18	PM10	14.93	25.27	30	µg/m <sup>3</sup>
Monitoring Point 2	3/8/18	PM10	38.99	25.23	30	µg/m <sup>3</sup>
<b>July 2018</b>						
Monitoring Point 2	28/07/18	PM10	13.38	24.97	30	µg/m <sup>3</sup>
Monitoring Point 2	25/07/18	PM10	3.36	24.83	30	µg/m <sup>3</sup>
Monitoring Point 2	16/07/18	PM10	4.77	25.3	30	µg/m <sup>3</sup>
Monitoring Point 2	10/07/18	PM10	7.09	25.32	30	µg/m <sup>3</sup>
Monitoring Point 2	4/7/18	PM10	13.79	25.62	30	µg/m <sup>3</sup>
<b>June 2018</b>						
Monitoring Point 2	28/6/18	PM10	10.81	25.44	30	µg/m <sup>3</sup>

## Peppertree Quarry Environmental Monitoring Report

Monitoring Point 2	22/6/18	PM10	6.90	25.4	30	µg/m <sup>3</sup>
Monitoring Point 2	16/6/18	PM10	0.13	25.43	30	µg/m <sup>3</sup>
Monitoring Point 2	10/6/18	PM10	1.58	25.93	30	µg/m <sup>3</sup>
Monitoring Point 2	4/6/18	PM10	11.7	26.42	30	µg/m <sup>3</sup>
<b>May 2018</b>						
Monitoring Point 2	29/5/18	PM10	49.09	26.21	30	µg/m <sup>3</sup>
Monitoring Point 2	23/5/18	PM10	19.87	25.74	30	µg/m <sup>3</sup>
Monitoring Point 2	22/5/18	PM10	17.18	25.41	30	µg/m <sup>3</sup>
Monitoring Point 2	11/5/18	PM10	1.53	25.23	30	µg/m <sup>3</sup>
<b>April 2018</b>						
Monitoring Point 2	30/4/18	PM10	11.86	26.03	30	
Monitoring Point 2	24/4/18	PM10	76.31	25.93	30	µg/m <sup>3</sup>
Monitoring Point 2	17/4/18	PM10	50.83	24.44	30	µg/m <sup>3</sup>
Monitoring Point 2	12/4/18	PM10	38.61	23.76	30	µg/m <sup>3</sup>
Monitoring Point 2	9/4/18	PM10	59.28	23.54	30	µg/m <sup>3</sup>
<b>March 2018</b>						
Monitoring Point 2	30/3/18	PM10	26.72	22.46	30	µg/m <sup>3</sup>
Monitoring Point 2	24/3/18	PM10	39.56	22.2	30	µg/m <sup>3</sup>
Monitoring Point 2	21/3/18	PM10	13.99	21.47	30	µg/m <sup>3</sup>
Monitoring Point 2	12/3/18	PM10	16.77	21.54	30	µg/m <sup>3</sup>
Monitoring Point 2	6/3/18	PM10	24.61	21.31	30	
<b>February 2018</b>						
Monitoring Point 2	28/2/18	PM10	12.18	20.96	30	µg/m <sup>3</sup>
Monitoring Point 2	22/2/18	PM10	37.31	20.89	30	µg/m <sup>3</sup>
Monitoring Point 2	19/2/18	PM10	16.64	21.11	30	µg/m <sup>3</sup>
Monitoring Point 2	10/2/18	PM10	40.06	21.18	30	µg/m <sup>3</sup>
Monitoring Point 2	4/2/18	PM10	24.79	20.47	30	µg/m <sup>3</sup>
<b>January 2018</b>						
Monitoring Point 2	29/1/18	PM10	43.09	20.39	30	µg/m <sup>3</sup>
Monitoring Point 2	23/1/18	PM10	114.45	19.77	30	µg/m <sup>3</sup>
Monitoring Point 2	17/1/18	PM10	51.02	17.53	30	µg/m <sup>3</sup>
Monitoring Point 2	11/1/18	PM10	38.41	16.53	30	µg/m <sup>3</sup>
Monitoring Point 2	5/1/18	PM10	44.1	16.14	30	µg/m <sup>3</sup>
<b>December 2017</b>						
Monitoring Point 2	30/12/17	PM10	17.47	15.35	30	µg/m <sup>3</sup>
Monitoring Point 2	28/12/17	PM10	80.86	15.05	30	µg/m <sup>3</sup>
Monitoring Point 2	27/12/18	PM10	33.15	14.64	30	µg/m <sup>3</sup>
Monitoring Point 2	22/12/17	PM10	23.36	14.51	30	µg/m <sup>3</sup>
Monitoring Point 2	20/12/17	PM10	18.88	14.81	30	µg/m <sup>3</sup>
Monitoring Point 2	15/12/17	PM10	19.66	15.49	30	µg/m <sup>3</sup>
Monitoring Point 2	13/12/17	PM10	41.99	16.41	30	µg/m <sup>3</sup>
Monitoring Point 2	7/12/17	PM10	6.27	16.45	30	µg/m <sup>3</sup>
Monitoring Point 2	6/12/17	PM10	5.6	17	30	µg/m <sup>3</sup>
<b>November 2017</b>						
Monitoring Point 2	30/11/17	PM10	0	17	30	µg/m <sup>3</sup>
Monitoring Point 2	24/11/17	PM10	0	017	30	µg/m <sup>3</sup>
Monitoring Point 2	18/11/17	PM10	0	17	30	µg/m <sup>3</sup>
Monitoring Point 2	12/11/18	PM10	17.47	18.44	30	µg/m <sup>3</sup>
Monitoring Point 2	7/11/18	PM10	10.62	18.35	30	µg/m <sup>3</sup>
Monitoring Point 2	6/11/18	PM10	0	18.35	30	µg/m <sup>3</sup>
Monitoring Point 2	3/11/18	PM10	7.12	18.78	30	µg/m <sup>3</sup>
<b>October 2017</b>						
Monitoring Point 2	31/10/17	PM10	0	18.78	30	µg/m <sup>3</sup>

## Peppertree Quarry Environmental Monitoring Report

Monitoring Point 2	26/10/17	PM10	5.48	19.05	30	µg/m <sup>3</sup>
Monitoring Point 2	25/10/17	PM10	0	19.05	30	µg/m <sup>3</sup>
Monitoring Point 2	19/10/17	PM10	17.2	19.97	30	µg/m <sup>3</sup>
Monitoring Point 2	16/10/17	PM10	25.4	19.99	30	µg/m <sup>3</sup>
Monitoring Point 2	13/10/17	PM10	0	19.99	30	µg/m <sup>3</sup>
Monitoring Point 2	7/10/17	PM10	11.18	20.02	30	µg/m <sup>3</sup>
Monitoring Point 2	3/10/17	PM10	13.15	20.12	30	µg/m <sup>3</sup>
Monitoring Point 2	1/10/17	PM10	0	20.15	30	µg/m <sup>3</sup>
<b>September 2017</b>						
Monitoring Point 2	25/9/17	PM10	6.12	19.96	30	µg/m <sup>3</sup>
Monitoring Point 2	22/9/17	PM10	44.27	19.92	30	µg/m <sup>3</sup>
Monitoring Point 2	19/9/17	PM10	8.92	19.18	30	µg/m <sup>3</sup>
Monitoring Point 2	14/9/17	PM10	5.83	19.16	30	µg/m <sup>3</sup>
Monitoring Point 2	13/9/17	PM10	0	19.12	30	µg/m <sup>3</sup>
Monitoring Point 2	6/9/17	PM10	1.67	18.91	30	µg/m <sup>3</sup>
Monitoring Point 2	1/9/17	PM10	8.66	19.1	30	µg/m <sup>3</sup>
<b>August 2017</b>						
Monitoring Point 2	29/8/17	PM10	8.76	19.21	30	µg/m <sup>3</sup>
Monitoring Point 2	26/8/17	PM10	0	19.45	30	µg/m <sup>3</sup>
Monitoring Point 2	20/8/17	PM10	0	19.27	30	µg/m <sup>3</sup>
Monitoring Point 2	17/8/17	PM10	1.23	19.02	30	µg/m <sup>3</sup>
Monitoring Point 2	14/8/17	PM10	0	19.43	30	µg/m <sup>3</sup>
Monitoring Point 2	8/8/17	PM10	3.87	19.23	30	µg/m <sup>3</sup>
Monitoring Point 2	2/8/17	PM10	8.04	19.42	30	µg/m <sup>3</sup>
<b>July 2017</b>						
Monitoring Point 2	27/7/17	PM10	26.88	19.32	30	µg/m <sup>3</sup>
Monitoring Point 2	21/7/17	PM10	15.97	18.93	30	µg/m <sup>3</sup>
Monitoring Point 2	15/7/17	PM10	6.73	18.69	30	µg/m <sup>3</sup>
Monitoring Point 2	9/7/17	PM10	3.15	18.64	30	µg/m <sup>3</sup>
Monitoring Point 2	3/7/17	PM10	17.7	18.76	30	µg/m <sup>3</sup>
<b>June 2017</b>						
Monitoring Point 2	27/6/17	PM10	27.67	18.54	30	µg/m <sup>3</sup>
Monitoring Point 2	21/6/17	PM10	6.5	18.25	30	µg/m <sup>3</sup>
Monitoring Point 2	15/6/17	PM10	14.01	18.18	30	µg/m <sup>3</sup>
Monitoring Point 2	9/6/17	PM10	3.53	18.2	30	µg/m <sup>3</sup>
Monitoring Point 2	3/6/17	PM10	17.58	18.15	30	µg/m <sup>3</sup>
<b>May 2017</b>						
Monitoring Point 2	28/5/17	PM10	5.69	17.96	30	µg/m <sup>3</sup>
Monitoring Point 2	22/5/17	PM10	7.26	17.9	30	µg/m <sup>3</sup>
Monitoring Point 2	16/5/17	PM10	8.9	18.74	30	µg/m <sup>3</sup>
Monitoring Point 2	10/5/17	PM10	47.86	18.75	30	µg/m <sup>3</sup>
Monitoring Point 2	4/5/17	PM10	20.45	18.01	30	µg/m <sup>3</sup>
<b>April 2017</b>						
Monitoring Point 2	28/4/17	PM10	5.22	17.79	30	µg/m <sup>3</sup>
Monitoring Point 2	22/4/17	PM10	20.7	18.09	30	µg/m <sup>3</sup>
Monitoring Point 2	16/4/17	PM10	12.83	18.01	30	µg/m <sup>3</sup>
Monitoring Point 2	10/4/17	PM10	4.77	18.27	30	µg/m <sup>3</sup>
Monitoring Point 2	4/4/17	PM10	2.02	18.68	30	µg/m <sup>3</sup>
<b>March 2017</b>						
Monitoring Point 2	29/3/17	PM10	18.92	19	30	µg/m <sup>3</sup>
Monitoring Point 2	23/3/17	PM10	5.44	18.96	30	µg/m <sup>3</sup>
Monitoring Point 2	17/3/17	PM10	2.74	18.94	30	µg/m <sup>3</sup>
Monitoring Point 2	11/3/17	PM10	61.15	19.06	30	µg/m <sup>3</sup>

## Peppertree Quarry Environmental Monitoring Report

Monitoring Point 2	5/3/17	PM10	26.36	18.87	30	µg/m <sup>3</sup>
<b>February 2017</b>						
Monitoring Point 2	27/2/17	PM10	38.37	19	30	µg/m <sup>3</sup>
Monitoring Point 2	21/2/17	PM10	52.19	18.53	30	µg/m <sup>3</sup>
Monitoring Point 2	15/2/17	PM10	64.66	17.95	30	µg/m <sup>3</sup>
Monitoring Point 2	9/2/17	PM10	43.81	17.52	30	µg/m <sup>3</sup>
Monitoring Point 2	3/2/17	PM10	33.17	17.37	30	µg/m <sup>3</sup>
<b>January 2017</b>						
Monitoring Point 2	28/1/17	PM10	32.54	17.24	30	µg/m <sup>3</sup>
Monitoring Point 2	22/1/17	PM10	27.25	17.04	30	µg/m <sup>3</sup>
Monitoring Point 2	16/1/17	PM10	51.24	16.91	30	µg/m <sup>3</sup>
Monitoring Point 2	10/1/17	PM10	20.87	16.17	30	µg/m <sup>3</sup>
Monitoring Point 2	4/1/17	PM10	12.44	16.43	30	µg/m <sup>3</sup>
<b>December 2016</b>						
Monitoring Point 2	29/12/16	PM10	17.81	16.78	30	µg/m <sup>3</sup>
Monitoring Point 2	23/12/16	PM10	34.22	17.22	30	µg/m <sup>3</sup>
Monitoring Point 2	17/12/16	PM10	13.18	17.39	30	µg/m <sup>3</sup>
Monitoring Point 2	11/12/16	PM10	27.27	18.22	30	µg/m <sup>3</sup>
Monitoring Point 2	5/12/16	PM10	50.68	19.02	30	µg/m <sup>3</sup>
<b>November 2016</b>						
Monitoring Point 2	29/11/16	PM10	24.14	20.78	30	µg/m <sup>3</sup>
Monitoring Point 2	23/11/16	PM10	18.51	20.72	30	µg/m <sup>3</sup>
Monitoring Point 2	17/11/16	PM10	23.2	22.08	30	µg/m <sup>3</sup>
Monitoring Point 2	11/11/16	PM10	23.98	22.03	30	µg/m <sup>3</sup>
Monitoring Point 2	5/11/16	PM10	16.36	22.22	30	µg/m <sup>3</sup>
<b>October 2016</b>						
Monitoring Point 2	30/10/16	PM10	15.24	22.16	30	µg/m <sup>3</sup>
Monitoring Point 2	24/10/16	PM10	9.09	22.72	30	µg/m <sup>3</sup>
Monitoring Point 2	18/10/16	PM10	3.96	22.96	30	µg/m <sup>3</sup>
Monitoring Point 2	12/10/16	PM10	2.23	23.25	30	µg/m <sup>3</sup>
Monitoring Point 2	6/10/16	PM10	7.61	23.36	30	µg/m <sup>3</sup>
<b>September 2016</b>						
Monitoring Point 2	30/9/16	PM10	3.34	23.6	30	µg/m <sup>3</sup>
Monitoring Point 2	24/9/16	PM10	6.93	23.88	30	µg/m <sup>3</sup>
Monitoring Point 2	18/9/16	PM10	12.76	23.94	30	µg/m <sup>3</sup>
Monitoring Point 2	12/9/16	PM10	15.06	23.88	30	µg/m <sup>3</sup>
Monitoring Point 2	6/9/16	PM10	22.52	23.8	30	µg/m <sup>3</sup>
<b>August 2016</b>						
Monitoring Point 2	31/8/16	PM10	9.1	23.51	30	µg/m <sup>3</sup>
Monitoring Point 2	25/8/16	PM10	4.46	23.46	30	µg/m <sup>3</sup>
Monitoring Point 2	19/8/16	PM10	25.42	23.41	30	µg/m <sup>3</sup>
Monitoring Point 2	13/8/16	PM10	7.38	23.33	30	µg/m <sup>3</sup>
Monitoring Point 2	7/8/16	PM10	15.59	23.26	30	µg/m <sup>3</sup>
Monitoring Point 2	1/8/16	PM10	1.83	23.12	30	µg/m <sup>3</sup>
<b>July 2016</b>						
Monitoring Point 2	26/7/16	PM10	2.78	23.11	30	µg/m <sup>3</sup>
Monitoring Point 2	20/7/16	PM10	1.75	23.11	30	µg/m <sup>3</sup>
Monitoring Point 2	14/7/16	PM10	3.41	23.15	30	µg/m <sup>3</sup>
Monitoring Point 2	8/7/16	PM10	10.5	23.78	30	µg/m <sup>3</sup>
Monitoring Point 2	2/7/16	PM10	4.61	26.11	30	µg/m <sup>3</sup>
<b>June 2016</b>						
Monitoring Point 2	26/6/16	PM10	10.05	26.08	30	µg/m <sup>3</sup>
Monitoring Point 2	20/6/16	PM10	1.86	26	30	µg/m <sup>3</sup>



## Peppertree Quarry Environmental Monitoring Report

Monitoring Point 2	14/6/16	PM10	15.04	26.01	30	µg/m <sup>3</sup>
Monitoring Point 2	8/6/16	PM10	1.01	26.08	30	µg/m <sup>3</sup>
Monitoring Point 2	2/6/16	PM10	5.66	26.13	30	µg/m <sup>3</sup>
<b>May 2016</b>						
Monitoring Point 2	27/5/16	PM10	2.28	26.11	30	µg/m <sup>3</sup>
Monitoring Point 2	21/5/16	PM10	58.18	26.26	30	µg/m <sup>3</sup>
Monitoring Point 2	15/5/16	PM10	9.68	25.35	30	µg/m <sup>3</sup>
Monitoring Point 2	9/5/16	PM10	2.96	25.36	30	µg/m <sup>3</sup>
Monitoring Point 2	3/5/16	PM10	6.69	25.38	30	µg/m <sup>3</sup>
<b>April 2016</b>						
Monitoring Point 2	29/4/16	PM10	23.33	25.32	30	µg/m <sup>3</sup>
Monitoring Point 2	21/4/16	PM10	16.16	24.99	30	µg/m <sup>3</sup>
Monitoring Point 2	15/4/16	PM10	28.66	24.76	30	µg/m <sup>3</sup>
Monitoring Point 2	9/4/16	PM10	29.43	24.57	30	µg/m <sup>3</sup>
Monitoring Point 2	3/4/16	PM10	21.54	24.3	30	µg/m <sup>3</sup>
<b>March 2016</b>						
Monitoring Point 2	28/3/16	PM10	16.95	24.1	30	µg/m <sup>3</sup>
Monitoring Point 2	22/3/16	PM10	3.92	24.19	30	µg/m <sup>3</sup>
Monitoring Point 2	16/3/16	PM10	10.48	24.45	30	µg/m <sup>3</sup>
Monitoring Point 2	10/3/16	PM10	49.13	24.81	30	µg/m <sup>3</sup>
Monitoring Point 2	4/3/16	PM10	34.41	24.55	30	µg/m <sup>3</sup>
<b>February 2016</b>						
Monitoring Point 2	27/2/16	PM10	9.83	24.5	30	µg/m <sup>3</sup>
Monitoring Point 2	21/2/16	PM10	16.97	24.61	30	µg/m <sup>3</sup>
Monitoring Point 2	15/2/16	PM10	38.28	24.82	30	µg/m <sup>3</sup>
Monitoring Point 2	9/2/16	PM10	34.7	24.29	30	µg/m <sup>3</sup>
Monitoring Point 2	3/2/16	PM10	25.18	23.83	30	µg/m <sup>3</sup>
<b>January 2016</b>						
Monitoring Point 2	28/1/16	PM10	19.94	23.87	30	µg/m <sup>3</sup>
Monitoring Point 2	22/1/16	PM10	19.44	23.72	30	µg/m <sup>3</sup>
Monitoring Point 2	16/1/16	PM10	6.13	23.4	30	µg/m <sup>3</sup>
Monitoring Point 2	10/1/16	PM10	36.94	23.3	30	µg/m <sup>3</sup>
Monitoring Point 2	4/1/16	PM10	33.85	22.69	30	µg/m <sup>3</sup>
<b>December 2015</b>						
Monitoring Point 2	29/12/15	PM10	44.31	22.14	30	µg/m <sup>3</sup>
Monitoring Point 2	23/12/15	PM10	44.76	21.41	30	µg/m <sup>3</sup>
Monitoring Point 2	17/12/15	PM10	63.88	20.68	30	µg/m <sup>3</sup>
Monitoring Point 2	11/12/15	PM10	76.01	19.63	30	µg/m <sup>3</sup>
Monitoring Point 2	5/12/15	PM10	158.27	18.39	30	µg/m <sup>3</sup>
<b>November 2015</b>						
Monitoring Point 2	29/11/15	PM10	20.35	15.79	30	µg/m <sup>3</sup>
Monitoring Point 2	23/11/15	PM10	101.65	15.46	30	µg/m <sup>3</sup>
Monitoring Point 2	17/11/15	PM10	20.00	13.79	30	µg/m <sup>3</sup>
Monitoring Point 2	11/11/15	PM10	35.78	13.46	30	µg/m <sup>3</sup>
Monitoring Point 2	5/11/15	PM10	12.33	13.22	30	µg/m <sup>3</sup>
<b>October 2015</b>						
Monitoring Point 2	30/10/15	PM10	49.62	13.85	30	µg/m <sup>3</sup>
Monitoring Point 2	24/10/15	PM10	23.79	13.21	30	µg/m <sup>3</sup>
Monitoring Point 2	18/10/15	PM10	21.32	13.34	30	µg/m <sup>3</sup>
Monitoring Point 2	12/10/15	PM10	8.98	13.2	30	µg/m <sup>3</sup>
Monitoring Point 2	6/10/15	PM10	22.53	13.36	30	µg/m <sup>3</sup>
<b>September 2015</b>						
Monitoring Point 2	30/9/15	PM10	20.47	13.11	30	µg/m <sup>3</sup>

## Peppertree Quarry Environmental Monitoring Report

Monitoring Point 2	24/9/15	PM10	10.68	13.2	30	µg/m <sup>3</sup>
Monitoring Point 2	18/9/15	PM10	8.89	13.34	30	µg/m <sup>3</sup>
Monitoring Point 2	12/9/15	PM10	10.08	13.26	30	µg/m <sup>3</sup>
Monitoring Point 2	6/9/15	PM10	4.76	13.27	30	µg/m <sup>3</sup>
<b>August 2015</b>						
Monitoring Point 2	31/8/15	PM10	6.39	13.25	30	µg/m <sup>3</sup>
Monitoring Point 2	25/8/15	PM10	1.37	13.33	30	µg/m <sup>3</sup>
Monitoring Point 2	19/8/15	PM10	20.65	13.55	30	µg/m <sup>3</sup>
Monitoring Point 2	13/8/15	PM10	3.02	13.4	30	µg/m <sup>3</sup>
Monitoring Point 2	7/8/15	PM10	6.84	14.07	30	µg/m <sup>3</sup>
Monitoring Point 2	1/8/15	PM10	1.38	14.23	30	µg/m <sup>3</sup>
<b>July 2015</b>						
Monitoring Point 2	26/7/15	PM10	2.4	14.42	30	µg/m <sup>3</sup>
Monitoring Point 2	20/7/15	PM10	4.4	14.61	30	µg/m <sup>3</sup>
Monitoring Point 2	14/7/15	PM10	42.03	14.79	30	µg/m <sup>3</sup>
Monitoring Point 2	8/7/15	PM10	152.41	14.1	30	µg/m <sup>3</sup>
Monitoring Point 2	2/7/15	PM10	3.02	11.68	30	µg/m <sup>3</sup>
<b>June 2015</b>						
Monitoring Point 2	26/6/15	PM10	4.98	11.72	30	µg/m <sup>3</sup>
Monitoring Point 2	20/6/15	PM10	2.35	11.7	30	µg/m <sup>3</sup>
Monitoring Point 2	14/6/15	PM10	19.19	11.7	30	µg/m <sup>3</sup>
Monitoring Point 2	8/6/15	PM10	4.51	11.53	30	µg/m <sup>3</sup>
Monitoring Point 2	2/6/15	PM10	4.38	11.65	30	µg/m <sup>3</sup>
<b>May 2015</b>						
Monitoring Point 2	27/5/15	PM10	11.42	11.72	30	µg/m <sup>3</sup>
Monitoring Point 2	21/5/15	PM10	2.7	11.53	30	µg/m <sup>3</sup>
Monitoring Point 2	15/5/15	PM10	10.05	11.49	30	µg/m <sup>3</sup>
Monitoring Point 2	9/5/15	PM10	4.5	11.58	30	µg/m <sup>3</sup>
Monitoring Point 2	3/5/15	PM10	2.54	11.87	30	µg/m <sup>3</sup>
<b>April 2015</b>						
Monitoring Point 2	27/4/15	PM10	3.18	12.17	30	µg/m <sup>3</sup>
Monitoring Point 2	21/4/15	PM10	2.34	12.57	30	µg/m <sup>3</sup>
Monitoring Point 2	15/4/15	PM10	17.38	12.89	30	µg/m <sup>3</sup>
Monitoring Point 2	9/4/15	PM10	12.84	13.3	30	µg/m <sup>3</sup>
Monitoring Point 2	3/4/15	PM10	8.94	13.42	30	µg/m <sup>3</sup>
<b>March 2015</b>						
Monitoring Point 2	28/3/15	PM10	22.57	13.98	30	µg/m <sup>3</sup>
Monitoring Point 2	22/3/15	PM10	20.06	13.8	30	µg/m <sup>3</sup>
Monitoring Point 2	16/3/15	PM10	32.41	13.81	30	µg/m <sup>3</sup>
Monitoring Point 2	10/3/15	PM10	33.22	13.53	30	µg/m <sup>3</sup>
Monitoring Point 2	4/3/15	PM10	31.49	13.24	30	µg/m <sup>3</sup>
<b>February 2015</b>						
Monitoring Point 2	26/2/15	PM10	16.44	13.05	30	µg/m <sup>3</sup>
Monitoring Point 2	20/2/15	PM10	29.64	13.2	30	µg/m <sup>3</sup>
Monitoring Point 2	14/2/15	PM10	5.88	13.04	30	µg/m <sup>3</sup>
Monitoring Point 2	8/2/15	PM10	6.92	13.55	30	µg/m <sup>3</sup>
Monitoring Point 2	2/2/15	PM10	27.6	14.21	30	µg/m <sup>3</sup>
<b>January 2015</b>						
Monitoring Point 2	27/1/15	PM10	10.62	14.45	30	µg/m <sup>3</sup>
Monitoring Point 2	21/1/15	PM10	0	14.42	30	µg/m <sup>3</sup>
Monitoring Point 2	15/1/15	PM10	0	14.66	30	µg/m <sup>3</sup>
Monitoring Point 2	9/1/15	PM10	0	15.14	30	µg/m <sup>3</sup>
Monitoring Point 2	3/1/15	PM10	0	15.42	30	µg/m <sup>3</sup>

## Peppertree Quarry Environmental Monitoring Report

### 1.3 TSP

#### TSP ( $\mu\text{g}/\text{m}^3$ ) results for the month of November and December 2019

Sample Period: November and December 2019  
Date Received: 18/12/2019 & 15/1/2020  
Peppertree  
Licensee: Quarry  
Licensee  
Address: 843 Marulan south Road, Marulan NSW 2579  
EPL No: 13088

#### Qualifications related to Dust:

\* Air Emissions Monitoring - High Volume Air Sampler

Sampling Frequency is collection of samples over a 24hr period, every 6 days. Protocols are contained in the Air Quality Management Plan found on this website.

Results						
Location	Date	Pollutant	Measurement	Rolling Annual Average	Limit	Unit
Monitoring Point 1	1/1/2020	TSP	527.83	73.94	90	$\mu\text{g}/\text{m}^3$
Monitoring Point 1	26/12/2019	TSP	164.83	65.53	90	$\mu\text{g}/\text{m}^3$
Monitoring Point 1	20/12/2019	TSP	311.88	64.34	90	$\mu\text{g}/\text{m}^3$
Monitoring Point 1	14/12/2019	TSP	117.02	59.71	90	$\mu\text{g}/\text{m}^3$
Monitoring Point 1	8/12/2019	TSP	119.56	58.63	90	$\mu\text{g}/\text{m}^3$
Monitoring Point 1	2/12/2019	TSP	38.81	57.19	90	$\mu\text{g}/\text{m}^3$
Monitoring Point 1	26/11/2019	TSP	161.58	58.41	90	$\mu\text{g}/\text{m}^3$
Monitoring Point 1	20/11/2019	TSP	83.09	56.23	90	$\mu\text{g}/\text{m}^3$
Monitoring Point 1	14/11/2019	TSP	29.16	55.22	90	$\mu\text{g}/\text{m}^3$

The TSP data indicates that during the sampling period the data range was between  $29.16\mu\text{g}/\text{m}^3$  and  $527.83\mu\text{g}/\text{m}^3$ .

The rolling annual average data range was between  $55.22\mu\text{g}/\text{m}^3$  and  $73.94\mu\text{g}/\text{m}^3$ , well below the long term criteria.

The majority of the samples were dark brown in colour and impacted by bush fire smoke and windblown dust from the west.

## Peppertree Quarry Environmental Monitoring Report

### Historical results

Location	Date	Pollutant	Measurement	Rolling Annual Average	Limit annual average	Unit
<b>October 2019</b>						
Monitoring Point 1	8/11/2019	TSP	25.05	56.08	90	µg/m <sup>3</sup>
Monitoring Point 1	2/11/2019	TSP	21.44	57.34	90	µg/m <sup>3</sup>
Monitoring Point 1	27/10/2019	TSP	36.61	57.16	90	µg/m <sup>3</sup>
Monitoring Point 1	21/10/2019	TSP	89.37	57.81	90	µg/m <sup>3</sup>
Monitoring Point 1	15/10/2019	TSP	54.53	57.18	90	µg/m <sup>3</sup>
<b>August / September 2019</b>						
Monitoring Point 1	9/10/2019	TSP	56	57.13	90	µg/m <sup>3</sup>
Monitoring Point 1	3/10/2019	TSP	59.18	56.41	90	µg/m <sup>3</sup>
Monitoring Point 1	27/9/2019	TSP	28.09	55.77	90	µg/m <sup>3</sup>
Monitoring Point 1	21/9/2019	TSP	53.41	57.11	90	µg/m <sup>3</sup>
Monitoring Point 1	15/9/2019	TSP	28.39	56.97	90	µg/m <sup>3</sup>
Monitoring Point 1	9/9/2019	TSP	21.88	57.61	90	µg/m <sup>3</sup>
Monitoring Point 1	3/9/2019	TSP	101.2	57.94	90	µg/m <sup>3</sup>
Monitoring Point 1	28/8/2019	TSP	25.93	56.58	90	µg/m <sup>3</sup>
Monitoring Point 1	22/8/2019	TSP	16.31	56.35	90	µg/m <sup>3</sup>
Monitoring Point 1	16/8/2019	TSP	173.57	57.32	90	µg/m <sup>3</sup>
<b>July 2019</b>						
Monitoring Point 1	10/8/2019	TSP	6.2	54.48	90	µg/m <sup>3</sup>
Monitoring Point 1	4/8/2019	TSP	31.9	54.64	90	µg/m <sup>3</sup>
Monitoring Point 1	29/7/2019	TSP	15.75	54.85	90	µg/m <sup>3</sup>
Monitoring Point 1	23/7/2019	TSP	31.4	55.91	90	µg/m <sup>3</sup>
Monitoring Point 1	17/7/2019	TSP	8.31	55.85	90	µg/m <sup>3</sup>
Monitoring Point 1	11/7/2019	TSP	16.46	55.77	90	µg/m <sup>3</sup>
<b>June 2019</b>						
Monitoring Point 1	5/7/2019	TSP	10.2	55.6	90	µg/m <sup>3</sup>
Monitoring Point 1	29/6/2019	TSP	14.68	55.69	90	µg/m <sup>3</sup>
Monitoring Point 1	23/6/2019	TSP	8.87	56.15	90	µg/m <sup>3</sup>
Monitoring Point 1	17/6/2019	TSP	7.01	56.62	90	µg/m <sup>3</sup>
<b>May 2019</b>						
Monitoring Point 1	11/6/19	TSP	15.07	56.71	90	µg/m <sup>3</sup>
Monitoring Point 1	5/6/19	TSP	4.77	56.47	90	µg/m <sup>3</sup>
Monitoring Point 1	30/5/19	TSP	3.44	56.42	90	µg/m <sup>3</sup>
Monitoring Point 1	24/5/19	TSP	33.89	57.31	90	µg/m <sup>3</sup>
Monitoring Point 1	18/5/19	TSP	59.42	58.61	90	µg/m <sup>3</sup>
Monitoring Point 1	12/5/19	TSP	6.3	58.76	90	µg/m <sup>3</sup>
<b>April 2019</b>						
Monitoring Point 1	6/5/2019	TSP	16.19	58.95	90	µg/m <sup>3</sup>
Monitoring Point 1	30/4/2019	TSP	146.91	58.73	90	µg/m <sup>3</sup>
Monitoring Point 1	24/4/2019	TSP	104.01	56.36	90	µg/m <sup>3</sup>
Monitoring Point 1	18/5/2019	TSP	66.56	55.04	90	µg/m <sup>3</sup>
Monitoring Point 1	12/4/2019	TSP	112.61	55.95	90	µg/m <sup>3</sup>
<b>March 2019</b>						
Monitoring Point 1	6/4/2019	TSP	38.14	56.49	90	µg/m <sup>3</sup>
Monitoring Point 1	31/3/2019	TSP	13.97	57.17	90	µg/m <sup>3</sup>
Monitoring Point 1	25/3/2019	TSP	39.09	59.05	90	µg/m <sup>3</sup>
Monitoring Point 1	19/3/2019	TSP	23.82	59.24	90	µg/m <sup>3</sup>
Monitoring Point 1	13/3/2019	TSP	183.14	59.86	90	µg/m <sup>3</sup>
Monitoring Point 1	7/3/2019	TSP	171.07	57.00	90	µg/m <sup>3</sup>

## Peppertree Quarry Environmental Monitoring Report

<b>February 2019</b>						
Monitoring Point 1	1/3/19	TSP	104.01	56.02	90	µg/m <sup>3</sup>
Monitoring Point 1	23/2/19	TSP	191.2	55.62	90	µg/m <sup>3</sup>
Monitoring Point 1	17/2/19	TSP	100.59	52.97	90	µg/m <sup>3</sup>
Monitoring Point 1	13/2/19	TSP	157.37	52.71	90	µg/m <sup>3</sup>
Monitoring Point 1	11/2/19	TSP	no sample	52.58	90	µg/m <sup>3</sup>
Monitoring Point 1	5/2/19	TSP	33.13	52.58	90	µg/m <sup>3</sup>
<b>January 2019</b>						
Monitoring Point 1	30/1/19	TSP	98.95	52.08	90	µg/m <sup>3</sup>
Monitoring Point 1	24/1/19	TSP	69.03	51.34	90	µg/m <sup>3</sup>
Monitoring Point 1	18/1/19	TSP	118.61	51.53	90	µg/m <sup>3</sup>
Monitoring Point 1	12/1/19	TSP	29.9	52.42	90	µg/m <sup>3</sup>
Monitoring Point 1	6/1/19	TSP	23.02	53.68	90	µg/m <sup>3</sup>
<b>December 2018</b>						
Monitoring Point 1	31/12/18	TSP	93.28	54.42	90	µg/m <sup>3</sup>
Monitoring Point 1	25/12/18	TSP	34.31	53.89	90	µg/m <sup>3</sup>
Monitoring Point 1	19/12/18	TSP	51.86	53.94	90	µg/m <sup>3</sup>
Monitoring Point 1	13/12/18	TSP	33.06	53.64	90	µg/m <sup>3</sup>
Monitoring Point 1	7/12/18	TSP	112.35	54.26	90	µg/m <sup>3</sup>
Monitoring Point 1	1/12/18	TSP	30.51	53.61	90	µg/m <sup>3</sup>
<b>November 2018</b>						
Monitoring Point 1	25/11/18	TSP	22.44	53.22	90	µg/m <sup>3</sup>
Monitoring Point 1	22/11/18	TSP	81	54.62	90	µg/m <sup>3</sup>
Monitoring Point 1	19/11/18	TSP	100.43	54.14	90	µg/m <sup>3</sup>
Monitoring Point 1	13/11/18	TSP	no sample	53.11	90	µg/m <sup>3</sup>
Monitoring Point 1	7/11/18	TSP	10.84	53.11	90	µg/m <sup>3</sup>
Monitoring Point 1	1/11/18	TSP	75.86	53.84	90	µg/m <sup>3</sup>
<b>October 2018</b>						
Monitoring Point 1	26/10/18	TSP	51.3	52.82	90	µg/m <sup>3</sup>
Monitoring Point 1	20/10/18	TSP	51.33	52.41	90	µg/m <sup>3</sup>
Monitoring Point 1	14/10/18	TSP	13.24	52.32	90	µg/m <sup>3</sup>
Monitoring Point 1	8/10/18	TSP	20.55	52.71	90	µg/m <sup>3</sup>
Monitoring Point 1	2/10/18	TSP	108.68	53.10	90	µg/m <sup>3</sup>
<b>September 2018</b>						
Monitoring Point 1	26/9/18	TSP	44.96	52.04	90	µg/m <sup>3</sup>
Monitoring Point 1	20/9/18	TSP	66.65	51.75	90	µg/m <sup>3</sup>
Monitoring Point 1	14/9/18	TSP	41.95	50.93	90	µg/m <sup>3</sup>
Monitoring Point 1	8/9/18	TSP	19.63	50.68	90	µg/m <sup>3</sup>
Monitoring Point 1	2/9/18	TSP	11.65	50.39	90	µg/m <sup>3</sup>
<b>August 2018</b>						
Monitoring Point 1	27/8/18	TSP	74.96	50.95	90	µg/m <sup>3</sup>
Monitoring Point 1	21/8/18	TSP	3.03	50.07	90	µg/m <sup>3</sup>
Monitoring Point 1	15/8/18	TSP	15.9	50.85	90	µg/m <sup>3</sup>
Monitoring Point 1	9/8/18	TSP	44.1	50.90	90	µg/m <sup>3</sup>
Monitoring Point 1	3/8/18	TSP	79.75	50.22	90	µg/m <sup>3</sup>
<b>July 2018</b>						
Monitoring Point 1	28/7/18	TSP	27.7	49.24	90	µg/m <sup>3</sup>
Monitoring Point 1	22/7/18	TSP	3.53	49.14	90	µg/m <sup>3</sup>
Monitoring Point 1	16/7/18	TSP	5.9	49.57	90	µg/m <sup>3</sup>
Monitoring Point 1	10/7/18	TSP	15.74	49.53	90	µg/m <sup>3</sup>
Monitoring Point 1	4/7/18	TSP	42.6	49.31	90	µg/m <sup>3</sup>
<b>June 2018</b>						
Monitoring Point 1	28/6/18	TSP	36.88	49.19	90	µg/m <sup>3</sup>
Monitoring Point 1	22/6/18	TSP	12.52	49.96	90	µg/m <sup>3</sup>

## Peppertree Quarry Environmental Monitoring Report

Monitoring Point 1	16/6/18	TSP	0.77	50.09	90	µg/m <sup>3</sup>
Monitoring Point 1	10/6/18	TSP	1.77	50.59	90	µg/m <sup>3</sup>
Monitoring Point 1	4/6/18	TSP	56.8	50.6	90	µg/m <sup>3</sup>
<b>May 2018</b>						
Monitoring Point 1	29/5/18	TSP	111.63	50.62	90	µg/m <sup>3</sup>
Monitoring Point 1	23/5/18	TSP	68.46	48.95	90	µg/m <sup>3</sup>
Monitoring Point 1	17/5/18	TSP	17.58	48.32	90	µg/m <sup>3</sup>
Monitoring Point 1	11/5/18	TSP	2.87	48.39	90	µg/m <sup>3</sup>
<b>April 2018</b>						
Monitoring Point 1	30/4/18	TSP	24.89	51.57	90	µg/m <sup>3</sup>
Monitoring Point 1	23/4/18	TSP	121.08	51.42	90	µg/m <sup>3</sup>
Monitoring Point 1	17/4/18	TSP	144.84	50.33	90	µg/m <sup>3</sup>
Monitoring Point 1	11/4/18	TSP	79.1	48.04	90	µg/m <sup>3</sup>
Monitoring Point 1	5/4/18	TSP	126.5	46.93	90	µg/m <sup>3</sup>
<b>March 2018</b>						
Monitoring Point 1	30/03/18	TSP	50.30	44.91	90	µg/m <sup>3</sup>
Monitoring Point 1	24/3/18	TSP	61.09	44.72	90	µg/m <sup>3</sup>
Monitoring Point 1	21/3/18	TSP	11.68	43.79	90	µg/m <sup>3</sup>
Monitoring Point 1	12/3/18	TSP	112.18	43.77	90	µg/m <sup>3</sup>
Monitoring Point 1	6/3/18	TSP	80.22	43.5	90	µg/m <sup>3</sup>
<b>February 2018</b>						
Monitoring Point 1	28/2/18	TSP	32.38	42.97	90	µg/m <sup>3</sup>
Monitoring Point 1	22/2/18	TSP	84.95	43.46	90	µg/m <sup>3</sup>
Monitoring Point 1	19/2/18	TSP	89.4	44.2	90	µg/m <sup>3</sup>
Monitoring Point 1	10/2/18	TSP	62.9	44.92	90	µg/m <sup>3</sup>
Monitoring Point 1	4/2/18	TSP	54.57	44.96	90	µg/m <sup>3</sup>
<b>January 2018</b>						
Monitoring Point 1	29/1/18	TSP	80.56	45.5	90	µg/m <sup>3</sup>
Monitoring Point 1	23/1/18	TSP	172.05	45.16	90	µg/m <sup>3</sup>
Monitoring Point 1	17/1/18	TSP	105.41	43.20	90	µg/m <sup>3</sup>
Monitoring Point 1	11/1/18	TSP	67.29	42.98	90	µg/m <sup>3</sup>
Monitoring Point 1	5/1/18	TSP	61.79	42.35	90	µg/m <sup>3</sup>
<b>December 2017</b>						
Monitoring Point 1	30/12/17	TSP	37.34	41.89	90	µg/m <sup>3</sup>
Monitoring Point 1	24/12/17	TSP	33.99	41.77	90	µg/m <sup>3</sup>
Monitoring Point 1	18/12/17	TSP	70.11	42.26	90	µg/m <sup>3</sup>
Monitoring Point 1	12/12/17	TSP	73.51	41.52	90	µg/m <sup>3</sup>
Monitoring Point 1	6/12/17	TSP	7.08	41.52	90	µg/m <sup>3</sup>
<b>November 2017</b>						
Monitoring Point 1	30/11/17	TSP	106.44	43.11	90	µg/m <sup>3</sup>
Monitoring Point 1	24/11/17	TSP	51.84	42.53	90	µg/m <sup>3</sup>
Monitoring Point 1	18/11/17	TSP	38.92	42.46	90	µg/m <sup>3</sup>
Monitoring Point 1	12/11/18	TSP	54.43	42.71	90	µg/m <sup>3</sup>
Monitoring Point 1	6/11/18	TSP	15	42.7	90	µg/m <sup>3</sup>
<b>October 2017</b>						
Monitoring Point 1	31/10/17	TSP	21.95	43.04	90	µg/m <sup>3</sup>
Monitoring Point 1	25/10/17	TSP	56.58	43.16	90	µg/m <sup>3</sup>
Monitoring Point 1	19/10/17	TSP	46.25	42.53	90	µg/m <sup>3</sup>
Monitoring Point 1	13/10/17	TSP	36.61	41.97	90	µg/m <sup>3</sup>
Monitoring Point 1	7/10/17	TSP	44.45	41.55	90	µg/m <sup>3</sup>
Monitoring Point 1	1/10/17	TSP	44.27	41.07	90	µg/m <sup>3</sup>
<b>September 2017</b>						
Monitoring Point 1	25/9/17	TSP	27.29	40.54	90	µg/m <sup>3</sup>

## Peppertree Quarry Environmental Monitoring Report

Monitoring Point 1	19/9/17	TSP	16.49	40.4	90	µg/m <sup>3</sup>
Monitoring Point 1	13/9/17	TSP	26.54	40.83	90	µg/m <sup>3</sup>
Monitoring Point 1	6/9/17	TSP	2.01	41.14	90	µg/m <sup>3</sup>
Monitoring Point 1	1/9/17	TSP	46.01	41.52	90	µg/m <sup>3</sup>
<b>August 2017</b>						
Monitoring Point 1	26/8/17	TSP	21.1	40.95	90	µg/m <sup>3</sup>
Monitoring Point 1	20/8/17	TSP	50.93	40.78	90	µg/m <sup>3</sup>
Monitoring Point 1	14/8/17	TSP	18.5	41	90	µg/m <sup>3</sup>
Monitoring Point 1	8/8/17	TSP	2.65	40.87	90	µg/m <sup>3</sup>
Monitoring Point 1	2/8/17	TSP	20.08	41.51	90	µg/m <sup>3</sup>
<b>July 2017</b>						
Monitoring Point 1	27/7/17	TSP	21.95	41.26	90	µg/m <sup>3</sup>
Monitoring Point 1	21/7/17	TSP	29.23	40.98	90	µg/m <sup>3</sup>
Monitoring Point 1	15/7/17	TSP	4	40.63	90	µg/m <sup>3</sup>
Monitoring Point 1	9/7/17	TSP	1.96	40.58	90	µg/m <sup>3</sup>
Monitoring Point 1	3/7/17	TSP	35.64	40.70	90	µg/m <sup>3</sup>
<b>June 2017</b>						
Monitoring Point 1	27/6/17	TSP	83.61	40.22	90	µg/m <sup>3</sup>
Monitoring Point 1	21/6/17	TSP	20.64	39.07	90	µg/m <sup>3</sup>
Monitoring Point 1	15/6/17	TSP	30.78	38.79	90	µg/m <sup>3</sup>
Monitoring Point 1	9/6/17	TSP	2.79	38.72	90	µg/m <sup>3</sup>
Monitoring Point 1	3/6/17	TSP	57.96	38.7	90	µg/m <sup>3</sup>
<b>May 2017</b>						
Monitoring Point 1	28/5/17	TSP	9.59	37.85	90	µg/m <sup>3</sup>
Monitoring Point 1	22/5/17	TSP	30.22	37.81	90	µg/m <sup>3</sup>
Monitoring Point 1	16/5/17	TSP	21.84	39.21	90	µg/m <sup>3</sup>
Monitoring Point 1	10/5/17	TSP	138.25	39.13	90	µg/m <sup>3</sup>
Monitoring Point 1	4/5/17	TSP	63.66	37.03	90	µg/m <sup>3</sup>
<b>April 2017</b>						
Monitoring Point 1	28/4/17	TSP	15.58	36.22	90	µg/m <sup>3</sup>
Monitoring Point 1	22/4/17	TSP	54.52	36.9	90	µg/m <sup>3</sup>
Monitoring Point 1	16/4/17	TSP	5.18	36.72	90	µg/m <sup>3</sup>
Monitoring Point 1	10/4/17	TSP	11.65	37.81	90	µg/m <sup>3</sup>
Monitoring Point 1	4/4/17	TSP	3.21	38.88	90	µg/m <sup>3</sup>
<b>March 2017</b>						
Monitoring Point 1	29/3/17	TSP	38.89	39.72	90	µg/m <sup>3</sup>
Monitoring Point 1	23/3/17	TSP	3.96	40.26	90	µg/m <sup>3</sup>
Monitoring Point 1	17/3/17	TSP	10.7	40.73	90	µg/m <sup>3</sup>
Monitoring Point 1	11/3/17	TSP	95.51	41.04	90	µg/m <sup>3</sup>
Monitoring Point 1	5/3/17	TSP	48.22	41.37	90	µg/m <sup>3</sup>
<b>February 2017</b>						
Monitoring Point 1	27/2/17	TSP	62.22	41.97	90	µg/m <sup>3</sup>
Monitoring Point 1	21/2/17	TSP	129.86	41.5	90	µg/m <sup>3</sup>
Monitoring Point 1	15/2/17	TSP	133.48	40.19	90	µg/m <sup>3</sup>
Monitoring Point 1	9/2/17	TSP	65.23	39.26	90	µg/m <sup>3</sup>
Monitoring Point 1	3/2/17	TSP	87.53	39.72	90	µg/m <sup>3</sup>
<b>January 2017</b>						
Monitoring Point 1	28/1/17	TSP	59.99	39.26	90	µg/m <sup>3</sup>
Monitoring Point 1	22/1/17	TSP	52.3	39.11	90	µg/m <sup>3</sup>
Monitoring Point 1	16/1/17	TSP	91.92	39	90	µg/m <sup>3</sup>
Monitoring Point 1	10/1/17	TSP	29.07	37.82	90	µg/m <sup>3</sup>
Monitoring Point 1	4/1/17	TSP	33.78	38.6	90	µg/m <sup>3</sup>
<b>December 2016</b>						

## Peppertree Quarry Environmental Monitoring Report

Monitoring Point 1	29/12/16	TSP	29.63	38.79	90	µg/m <sup>3</sup>
Monitoring Point 1	23/12/16	TSP	64.25	39.85	90	µg/m <sup>3</sup>
Monitoring Point 1	17/12/16	TSP	24.69	40.58	90	µg/m <sup>3</sup>
Monitoring Point 1	11/12/16	TSP	73.5	42.34	90	µg/m <sup>3</sup>
Monitoring Point 1	5/12/16	TSP	104.36	43.1	90	µg/m <sup>3</sup>
<b>November 2016</b>						
Monitoring Point 1	29/11/16	TSP	71.14	42.61	90	µg/m <sup>3</sup>
Monitoring Point 1	23/11/16	TSP	47.44	42.23	90	µg/m <sup>3</sup>
Monitoring Point 1	17/11/16	TSP	54.04	43.37	90	µg/m <sup>3</sup>
Monitoring Point 1	11/11/16	TSP	53.96	43.31	90	µg/m <sup>3</sup>
Monitoring Point 1	5/11/16	TSP	35.42	44.4	90	µg/m <sup>3</sup>
<b>October 2016</b>						
Monitoring Point 1	30/10/16	TSP	29.77	44.46	90	µg/m <sup>3</sup>
Monitoring Point 1	24/10/16	TSP	18.07	45.98	90	µg/m <sup>3</sup>
Monitoring Point 1	18/10/16	TSP	11.73	46.78	90	µg/m <sup>3</sup>
Monitoring Point 1	12/10/16	TSP	11.08	47.36	90	µg/m <sup>3</sup>
Monitoring Point 1	6/10/16	TSP	15.33	47.63	90	µg/m <sup>3</sup>
<b>September 2016</b>						
Monitoring Point 1	30/9/16	TSP	12.16	48.12	90	µg/m <sup>3</sup>
Monitoring Point 1	24/9/16	TSP	18.25	48.89	90	µg/m <sup>3</sup>
Monitoring Point 1	18/9/16	TSP	43.14	49.18	90	µg/m <sup>3</sup>
Monitoring Point 1	12/9/16	TSP	45.55	48.85	90	µg/m <sup>3</sup>
Monitoring Point 1	6/9/16	TSP	24.82	48.48	90	µg/m <sup>3</sup>
<b>August 2016</b>						
Monitoring Point 1	31/8/16	TSP	11.29	48.45	90	µg/m <sup>3</sup>
Monitoring Point 1	25/8/16	TSP	9.81	48.48	90	µg/m <sup>3</sup>
Monitoring Point 1	19/8/16	TSP	65.49	48.37	90	µg/m <sup>3</sup>
Monitoring Point 1	13/8/16	TSP	10.2	48.26	90	µg/m <sup>3</sup>
Monitoring Point 1	7/8/16	TSP	42.03	48.17	90	µg/m <sup>3</sup>
Monitoring Point 1	1/8/16	TSP	4.88	47.56	90	µg/m <sup>3</sup>
<b>July 2016</b>						
Monitoring Point 1	26/7/16	TSP	4.53	47.67	90	µg/m <sup>3</sup>
Monitoring Point 1	20/7/16	TSP	8.15	47.72	90	µg/m <sup>3</sup>
Monitoring Point 1	14/7/16	TSP	0.93	47.81	90	µg/m <sup>3</sup>
Monitoring Point 1	8/7/16	TSP	9.31	48.04	90	µg/m <sup>3</sup>
Monitoring Point 1	2/7/16	TSP	6.2	49.93	90	µg/m <sup>3</sup>
<b>June 2016</b>						
Monitoring Point 1	26/6/16	TSP	13.55	49.91	90	µg/m <sup>3</sup>
Monitoring Point 1	20/6/16	TSP	3.38	50.13	90	µg/m <sup>3</sup>
Monitoring Point 1	14/6/16	TSP	26.58	50.15	90	µg/m <sup>3</sup>
Monitoring Point 1	8/6/16	TSP	1.39	52.44	90	µg/m <sup>3</sup>
Monitoring Point 1	2/6/16	TSP	6.46	52.54	90	µg/m <sup>3</sup>
<b>May 2016</b>						
Monitoring Point 1	27/5/16	TSP	6.76	52.58	90	µg/m <sup>3</sup>
Monitoring Point 1	21/5/16	TSP	115.99	52.76	90	µg/m <sup>3</sup>
Monitoring Point 1	15/5/16	TSP	17.01	51.01	90	µg/m <sup>3</sup>
Monitoring Point 1	9/5/16	TSP	10.38	51.12	90	µg/m <sup>3</sup>
Monitoring Point 1	3/5/16	TSP	13.9	51.23	90	µg/m <sup>3</sup>
<b>April 2016</b>						
Monitoring Point 1	29/4/16	TSP	57.1	51.14	90	µg/m <sup>3</sup>
Monitoring Point 1	21/4/16	TSP	43.81	50.31	90	µg/m <sup>3</sup>
Monitoring Point 1	15/4/16	TSP	71.37	49.66	90	µg/m <sup>3</sup>
Monitoring Point 1	9/4/16	TSP	77.16	49.04	90	µg/m <sup>3</sup>



## Peppertree Quarry Environmental Monitoring Report

Monitoring Point 1	3/4/16	TSP	54.12	48.25	90	µg/m <sup>3</sup>
<b>March 2016</b>						
Monitoring Point 1	28/3/16	TSP	72.1	47.8	90	µg/m <sup>3</sup>
Monitoring Point 1	22/3/16	TSP	32.4	47.63	90	µg/m <sup>3</sup>
Monitoring Point 1	16/3/16	TSP	29.6	47.93	90	µg/m <sup>3</sup>
Monitoring Point 1	10/3/16	TSP	115.53	48.65	90	µg/m <sup>3</sup>
Monitoring Point 1	4/3/16	TSP	85.2	47.98	90	µg/m <sup>3</sup>
<b>February 2016</b>						
Monitoring Point 1	27/2/16	TSP	33.44	47.76	90	µg/m <sup>3</sup>
Monitoring Point 1	21/2/16	TSP	50.04	47.81	90	µg/m <sup>3</sup>
Monitoring Point 1	15/2/16	TSP	76.75	47.99	90	µg/m <sup>3</sup>
Monitoring Point 1	9/2/16	TSP	93.03	47.81	90	µg/m <sup>3</sup>
Monitoring Point 1	3/2/16	TSP	59.44	47.38	90	µg/m <sup>3</sup>
<b>January 2016</b>						
Monitoring Point 1	28/1/16	TSP	51.24	47.07	90	µg/m <sup>3</sup>
Monitoring Point 1	22/1/16	TSP	45.26	46.55	90	µg/m <sup>3</sup>
Monitoring Point 1	16/1/16	TSP	19.87	46.56	90	µg/m <sup>3</sup>
Monitoring Point 1	10/1/16	TSP	76.68	46.96	90	µg/m <sup>3</sup>
Monitoring Point 1	4/1/16	TSP	45.33	46.38	90	µg/m <sup>3</sup>
<b>December 2015</b>						
Monitoring Point 1	29/12/15	TSP	94.46	46.6	90	µg/m <sup>3</sup>
Monitoring Point 1	23/12/15	TSP	108.57	45.39	90	µg/m <sup>3</sup>
Monitoring Point 1	17/12/15	TSP	132.01	44.45	90	µg/m <sup>3</sup>
Monitoring Point 1	11/12/15	TSP	120.32	43.99	90	µg/m <sup>3</sup>
Monitoring Point 1	5/12/15	TSP	74.44	42.24	90	µg/m <sup>3</sup>
<b>November 2015</b>						
Monitoring Point 1	29/11/15	TSP	47.73	41.41	90	µg/m <sup>3</sup>
Monitoring Point 1	23/11/15	TSP	122.91	41.45	90	µg/m <sup>3</sup>
Monitoring Point 1	17/11/15	TSP	44.6	40.46	90	µg/m <sup>3</sup>
Monitoring Point 1	11/11/15	TSP	120.58	40.15	90	µg/m <sup>3</sup>
Monitoring Point 1	5/11/15	TSP	38.57	39.32	90	µg/m <sup>3</sup>
<b>October 2015</b>						
Monitoring Point 1	30/10/15	TSP	122.73	40.48	90	µg/m <sup>3</sup>
Monitoring Point 1	24/10/15	TSP	67.06	38.89	90	µg/m <sup>3</sup>
Monitoring Point 1	18/10/15	TSP	47.17	38.85	90	µg/m <sup>3</sup>
Monitoring Point 1	12/10/15	TSP	27.05	38.69	90	µg/m <sup>3</sup>
Monitoring Point 1	6/10/15	TSP	45.75	38.74	90	µg/m <sup>3</sup>
<b>September 2015</b>						
Monitoring Point 1	30/9/15	TSP	58.64	38.4	90	µg/m <sup>3</sup>
Monitoring Point 1	24/9/15	TSP	36.25	38.31	90	µg/m <sup>3</sup>
Monitoring Point 1	18/9/15	TSP	22.87	38.63	90	µg/m <sup>3</sup>
Monitoring Point 1	12/9/15	TSP	22.99	38.39	90	µg/m <sup>3</sup>
Monitoring Point 1	6/9/15	TSP	23.05	38.29	90	µg/m <sup>3</sup>
<b>August 2015</b>						
Monitoring Point 1	31/8/15	TSP	13.26	38.1	90	µg/m <sup>3</sup>
Monitoring Point 1	25/8/15	TSP	3.02	38.51	90	µg/m <sup>3</sup>
Monitoring Point 1	19/8/15	TSP	58.67	38.89	90	µg/m <sup>3</sup>
Monitoring Point 1	13/8/15	TSP	4.73	38.27	90	µg/m <sup>3</sup>
Monitoring Point 1	7/8/15	TSP	4.98	39.36	90	µg/m <sup>3</sup>
Monitoring Point 1	1/8/15	TSP	11.69	39.69	90	µg/m <sup>3</sup>
<b>July 2015</b>						
Monitoring Point 1	26/7/15	TSP	7.24	39.97	90	µg/m <sup>3</sup>
Monitoring Point 1	20/7/15	TSP	13.48	40.23	90	µg/m <sup>3</sup>

## Peppertree Quarry Environmental Monitoring Report

Monitoring Point 1	14/7/15	TSP	15.47	40.63	90	µg/m <sup>3</sup>
Monitoring Point 1	8/7/15	TSP	124.63	40.68	90	µg/m <sup>3</sup>
Monitoring Point 2	2/7/15	TSP	4.89	38.66	90	µg/m <sup>3</sup>
<b>June 2015</b>						
Monitoring Point 1	26/6/15	TSP	26.76	38.66	90	µg/m <sup>3</sup>
Monitoring Point 1	20/6/15	TSP	4.57	38.34	90	µg/m <sup>3</sup>
Monitoring Point 1	14/6/15	TSP	166.17	38.37	90	µg/m <sup>3</sup>
Monitoring Point 1	8/6/15	TSP	7.93	35.95	90	µg/m <sup>3</sup>
Monitoring Point 1	2/6/15	TSP	8.88	36.13	90	µg/m <sup>3</sup>
<b>May 2015</b>						
Monitoring Point 1	27/5/15	TSP	17.38	36.18	90	µg/m <sup>3</sup>
Monitoring Point 1	21/5/15	TSP	9.13	36.65	90	µg/m <sup>3</sup>
Monitoring Point 1	15/5/15	TSP	23.73	36.96	90	µg/m <sup>3</sup>
Monitoring Point 1	9/5/15	TSP	17.29	37.01	90	µg/m <sup>3</sup>
Monitoring Point 1	3/5/15	TSP	8.63	37.65	90	µg/m <sup>3</sup>
<b>April 2015</b>						
Monitoring Point 1	27/4/15	TSP	6.27	38.05	90	µg/m <sup>3</sup>
Monitoring Point 1	21/4/15	TSP	4.23	38.92	90	µg/m <sup>3</sup>
Monitoring Point 1	15/4/15	TSP	33.39	39.42	90	µg/m <sup>3</sup>
Monitoring Point 1	9/4/15	TSP	29.35	39.62	90	µg/m <sup>3</sup>
Monitoring Point 1	3/4/15	TSP	26.25	39.79	90	µg/m <sup>3</sup>
<b>March 2015</b>						
Monitoring Point 1	28/3/15	TSP	61.75	39.79	90	µg/m <sup>3</sup>
Monitoring Point 1	22/3/15	TSP	50.67	39.05	90	µg/m <sup>3</sup>
Monitoring Point 1	16/3/15	TSP	73.64	38.86	90	µg/m <sup>3</sup>
Monitoring Point 1	10/3/15	TSP	74.9	38.1	90	µg/m <sup>3</sup>
Monitoring Point 1	4/3/15	TSP	71.58	37.56	90	µg/m <sup>3</sup>
<b>February 2015</b>						
Monitoring Point 1	26/2/15	TSP	36.44	37.08	90	µg/m <sup>3</sup>
Monitoring Point 1	20/2/15	TSP	61.3	37.19	90	µg/m <sup>3</sup>
Monitoring Point 1	14/2/15	TSP	65.34	36.79	90	µg/m <sup>3</sup>
Monitoring Point 1	8/2/15	TSP	66.82	37.15	90	µg/m <sup>3</sup>
Monitoring Point 1	2/2/15	TSP	40.95	37.9	90	µg/m <sup>3</sup>
<b>January 2015</b>						
Monitoring Point 1	27/1/15	TSP	18.98	38.99	90	µg/m <sup>3</sup>
Monitoring Point 1	21/1/15	TSP	45.9	39.19	90	µg/m <sup>3</sup>
Monitoring Point 1	15/1/15	TSP	44.78	39.54	90	µg/m <sup>3</sup>
Monitoring Point 1	9/1/15	TSP	41.31	39.97	90	µg/m <sup>3</sup>
Monitoring Point 1	3/1/15	TSP	58.28	40.27	90	µg/m <sup>3</sup>

## 2. Blasting

Blast monitoring is conducted as per condition L7 of EPL 13088. The blasting monitoring results for the month of November and December 2019 are summarised below.

Sample Period: November and December 2019  
 Licensee: Peppertree Quarry  
 Licensee Address: 843 Marulan south road, Marulan NSW 2579  
 EPL No: 13088

### Qualifications related to noise:

- \* The overpressure level from blasting operations at the premises must not exceed 120dB (Lin Peak) at any time
  - \* The overpressure level from blasting operations at the premises must not exceed 115dB (Lin Peak) for more than 5% of the total number of blasts over each reporting period
  - \* Ground vibration peak particle vector from the blasting operations at the premises must not exceed 10mm/sec at any time
  - \* Ground vibration peak particle vector from the blasting operations at the premises must not exceed 5mm/sec for more than 5% of the total number of blasts over each reporting period
  - \* Blast monitoring overpressure and ground vibration is measured at the 4 locations. – North west, north east, Pace and managers residence
- Measurements are online and can be obtained within 15minutes of the blast however blast reports with the data are submitted with 48 hours of each blast

Results					
Location	Blast Date	Ground Vibration Result	GV Compliant	Overpressure Result	OP Compliant
North West Boundary	19 <sup>th</sup> December 2019	No trigger	YES	No trigger	YES
North East Boundary	19 <sup>th</sup> December 2019	0.13	YES	112.9	YES
683 Marulan South Road	19 <sup>th</sup> December 2019	0.06	YES	104.2	YES
Residence	19 <sup>th</sup> December 2019	0.04	YES	96.2	YES
North West Boundary	12 <sup>th</sup> December 2019	No trigger	YES	No trigger	YES
North East Boundary	12 <sup>th</sup> December 2019	No trigger	YES	No trigger	YES
683 Marulan South Road	12 <sup>th</sup> December 2019	No trigger	YES	No trigger	YES
Residence	12 <sup>th</sup> December 2019	1.02	YES	99.8	YES
North West Boundary	5 <sup>th</sup> December 2019	No trigger	YES	No trigger	YES
North East Boundary	5 <sup>th</sup> December 2019	No trigger	YES	No trigger	YES
683 Marulan South Road	5 <sup>th</sup> December 2019	No trigger	YES	No trigger	YES
Residence	5 <sup>th</sup> December 2019	No trigger	YES	No trigger	YES
North West Boundary	29 <sup>th</sup> November 2019	1.09	YES	99.2	YES
North East Boundary	29 <sup>th</sup> November 2019	No trigger	YES	No trigger	YES
683 Marulan South Road	29 <sup>th</sup> November 2019	No trigger	YES	No trigger	YES
Residence	29 <sup>th</sup> November 2019	No trigger	YES	No trigger	YES
North West Boundary	14 <sup>th</sup> November 2019	1.02	YES	100.3	YES
North East Boundary	14 <sup>th</sup> November 2019	No trigger	YES	No trigger	YES
683 Marulan South Road	14 <sup>th</sup> November 2019	No trigger	YES	No trigger	YES
Residence	14 <sup>th</sup> November 2019	No trigger	YES	No trigger	YES

## Peppertree Quarry Environmental Monitoring Report

North West Boundary	7 <sup>th</sup> November 2019	No trigger	YES	No trigger	YES
North East Boundary	7 <sup>th</sup> November 2019	0.2	YES	117.9	YES
683 Marulan South Road	7 <sup>th</sup> November 2019	No trigger	YES	No trigger	YES
Residence	7 <sup>th</sup> November 2019	No trigger	YES	No trigger	YES

The blast data indicates that results are below the trigger levels for both Ground Vibration and Overpressure for all blasts conducted in November and December 2019.

### Historical results

Location	Blast Date	Ground Vibration Result	GV Compliant	Overpressure Result	OP Compliant
North West Boundary	31 <sup>st</sup> October 2019	1.56	YES	102.4	YES
North East Boundary	31 <sup>st</sup> October 2019	No trigger	YES	No trigger	YES
683 Marulan South Road	31 <sup>st</sup> October 2019	0.08	YES	106.9	YES
Residence	31 <sup>st</sup> October 2019	2.27	YES	102	YES
North West Boundary	29 <sup>th</sup> October 2019	0.54	YES	104.7	YES
North East Boundary	29 <sup>th</sup> October 2019	No trigger	YES	No trigger	YES
683 Marulan South Road	29 <sup>th</sup> October 2019	No trigger	YES	No trigger	YES
Residence	29 <sup>th</sup> October 2019	0.6	YES	98.2	YES
North West Boundary	22 <sup>nd</sup> October 2019	No Trigger	YES	No Trigger	YES
North East Boundary	22 <sup>nd</sup> October 2019	No Trigger	YES	No Trigger	YES
683 Marulan South Road	22 <sup>nd</sup> October 2019	No Trigger	YES	No Trigger	YES
Residence	22 <sup>nd</sup> October 2019	0.59	YES	98.1	YES
North West Boundary	21 <sup>st</sup> October 2019	No Trigger	YES	No Trigger	YES
North East Boundary	21 <sup>st</sup> October 2019	0.22	YES	100.9	YES
683 Marulan South Road	21 <sup>st</sup> October 2019	No Trigger	YES	No Trigger	YES
Residence	21 <sup>st</sup> October 2019	1.03	YES	100.2	YES
North West Boundary	8 <sup>th</sup> October 2019	No Trigger	YES	No Trigger	YES
North East Boundary	8 <sup>th</sup> October 2019	No Trigger	YES	No Trigger	YES
683 Marulan South Road	8 <sup>th</sup> October 2019	No Trigger	YES	No Trigger	YES
Residence	8 <sup>th</sup> October 2019	0.72	YES	96.6	YES
North West Boundary	1 <sup>st</sup> October 2019	No Trigger	YES	No Trigger	YES
North East Boundary	1 <sup>st</sup> October 2019	No Trigger	YES	No Trigger	YES
683 Marulan South Road	1 <sup>st</sup> October 2019	0.21	YES	98.8	YES
Residence	1 <sup>st</sup> October 2019	0.71	YES	102.4	YES
North West Boundary	24 <sup>th</sup> September 2019	No Trigger	YES	No Trigger	YES
North East Boundary	24 <sup>th</sup> September 2019	0.24	YES	95.6	YES
683 Marulan South Road	24 <sup>th</sup> September 2019	0.22	YES	99.1	YES
Residence	24 <sup>th</sup> September 2019	0.86	YES	102.4	YES
North West Boundary	19 <sup>th</sup> September 2019	No Trigger	YES	No Trigger	YES
North East Boundary	19 <sup>th</sup> September 2019	0.23	YES	95.6	YES
683 Marulan South Road	19 <sup>th</sup> September 2019	No Trigger	YES	No Trigger	YES
Residence	19 <sup>th</sup> September 2019	0.78	YES	105.6	YES

## Peppertree Quarry Environmental Monitoring Report

North West Boundary	12 September 2019	1.38	YES	105.7	YES
North East Boundary	12 September 2019	0.27	YES	104.7	YES
683 Marulan South Road	12 September 2019	0.24	YES	99.2	YES
Residence	12 September 2019	1.93	YES	101.4	YES
North West Boundary	5 <sup>th</sup> September 2019	1.66	YES	104.2	YES
North East Boundary	5 <sup>th</sup> September 2019	0.21	YES	100.9	YES
683 Marulan South Road	5 <sup>th</sup> September 2019	0.31	YES	99.3	YES
Residence	5 <sup>th</sup> September 2019	1.37	YES	102.4	YES
North West Boundary	3 <sup>rd</sup> September 2019	0.76	YES	102.4	YES
North East Boundary	3 <sup>rd</sup> September 2019	No Trigger	YES	No Trigger	YES
683 Marulan South Road	3 <sup>rd</sup> September 2019	No Trigger	YES	No Trigger	YES
Residence	3 <sup>rd</sup> September 2019	1.00	YES	101.4	YES
North West Boundary	27th August 2019	No Trigger	YES	No Trigger	YES
North East Boundary	27th August 2019	No Trigger	YES	No Trigger	YES
683 Marulan South Road	27th August 2019	No Trigger	YES	No Trigger	YES
Residence	27th August 2019	No Trigger	YES	No Trigger	YES
North West Boundary	22nd August 2019	0.43	YES	109.4	YES
North East Boundary	22nd August 2019	No Trigger	YES	No Trigger	YES
683 Marulan South Road	22nd August 2019	No Trigger	YES	No Trigger	YES
Residence	22nd August 2019	0.67	YES	97.3	YES
North West Boundary	20th August 2019	0.96	YES	104.7	YES
North East Boundary	20th August 2019	No Trigger	YES	No Trigger	YES
683 Marulan South Road	20th August 2019	0.3	YES	101.1	YES
Residence	20th August 2019	1.4	YES	99.9	YES
North West Boundary	15th August 2019	0.29	YES	102.4	YES
North East Boundary	15th August 2019	No Trigger	YES	No Trigger	YES
683 Marulan South Road	15th August 2019	No Trigger	YES	No Trigger	YES
Residence	15th August 2019	0.28	YES	102.4	YES
North West Boundary	13th August 2019	0.6	YES	106.6	YES
North East Boundary	13th August 2019	No Trigger	YES	No Trigger	YES
683 Marulan South Road	13th August 2019	No Trigger	YES	No Trigger	YES
Residence	13th August 2019	0.6	YES	104	YES
North West Boundary	8th August 2019	0.89	YES	109	YES
North East Boundary	8th August 2019	No Trigger	YES	No Trigger	YES
683 Marulan South Road	8th August 2019	No Trigger	YES	No Trigger	YES
Residence	8th August 2019	0.95	YES	100	YES
North West Boundary	1 <sup>st</sup> August 2019	1.09	YES	114.2	YES
North East Boundary	1 <sup>st</sup> August 2019	no trigger	YES	no trigger	YES
683 Marulan South Road	1 <sup>st</sup> August 2019	no trigger	YES	no trigger	YES
Residence	1 <sup>st</sup> August 2019	0.81	YES	111.6	YES
North West Boundary	30 <sup>th</sup> July 2019	1.12	YES	107.6	YES
North East Boundary	30 <sup>th</sup> July 2019	no trigger	YES	no trigger	YES

## Peppertree Quarry Environmental Monitoring Report

683 Marulan South Road	30 <sup>th</sup> July 2019	no trigger	YES	no trigger	YES
Residence	30 <sup>th</sup> July 2019	1.43	YES	100.7	YES
North West Boundary	26 <sup>th</sup> July 2019	no trigger	YES	no trigger	YES
North East Boundary	26 <sup>th</sup> July 2019	no trigger	YES	no trigger	YES
683 Marulan South Road	26 <sup>th</sup> July 2019	no trigger	YES	no trigger	YES
Residence	26 <sup>th</sup> July 2019	no trigger	YES	no trigger	YES
North West Boundary	24 <sup>th</sup> July 2019	0.98	YES	106.6	YES
North East Boundary	24 <sup>th</sup> July 2019	no trigger	YES	no trigger	YES
683 Marulan South Road	24 <sup>th</sup> July 2019	0.26	YES	100.6	YES
Residence	24 <sup>th</sup> July 2019	0.95	YES	101.4	YES
North West Boundary	16 <sup>th</sup> July 2019	1.27	YES	113.5	YES
North East Boundary	16 <sup>th</sup> July 2019	no trigger	YES	no trigger	YES
683 Marulan South Road	16 <sup>th</sup> July 2019	no trigger	YES	no trigger	YES
Residence	16 <sup>th</sup> July 2019	1.09	YES	102.9	YES
North West Boundary	11 <sup>th</sup> July 2019	1.51	YES	111.9	YES
North East Boundary	11 <sup>th</sup> July 2019	No Trigger	YES	No Trigger	YES
683 Marulan South Road	11 <sup>th</sup> July 2019	0.25	YES	106.9	YES
Residence	11 <sup>th</sup> July 2019	1.83	YES	97.4	YES
North West Boundary	4 <sup>th</sup> July 2019	1.14	YES	107.7	YES
North East Boundary	4 <sup>th</sup> July 2019	No Trigger	YES	No Trigger	YES
683 Marulan South Road	4 <sup>th</sup> July 2019	No Trigger	YES	No Trigger	YES
Residence	4 <sup>th</sup> July 2019	1.22	YES	106.7	YES
North West Boundary	27 <sup>th</sup> June 2019	0.68	YES	105	YES
North East Boundary	27 <sup>th</sup> June 2019	No Trigger	YES	No Trigger	YES
683 Marulan South Road	27 <sup>th</sup> June 2019	No Trigger	YES	No Trigger	YES
Residence	27 <sup>th</sup> June 2019	0.93	YES	104.3	YES
North West Boundary	20 <sup>th</sup> June 2019	0.66	YES	99.3	YES
North East Boundary	20 <sup>th</sup> June 2019	No Trigger	YES	No Trigger	YES
683 Marulan South Road	20 <sup>th</sup> June 2019	No Trigger	YES	No Trigger	YES
Residence	20 <sup>th</sup> June 2019	0.51	YES	97.5	YES
North West Boundary	5 <sup>th</sup> June 2019	no trigger	YES	no trigger	YES
North East Boundary	5 <sup>th</sup> June 2019	no trigger	YES	no trigger	YES
683 Marulan South Road	5 <sup>th</sup> June 2019	no trigger	YES	no trigger	YES
Residence	5 <sup>th</sup> June 2019	no trigger	YES	no trigger	YES
North West Boundary	30 <sup>th</sup> May 2019	0.61	YES	105.4	YES
North East Boundary	30 <sup>th</sup> May 2019	no trigger	YES	no trigger	YES
683 Marulan South Road	30 <sup>th</sup> May 2019	no trigger	YES	no trigger	YES
Residence	30 <sup>th</sup> May 2019	0.81	YES	80.1	YES
North West Boundary	24 <sup>th</sup> May 2019	0.68	YES	106.5	YES
North East Boundary	24 <sup>th</sup> May 2019	no trigger	YES	no trigger	YES
683 Marulan South Road	24 <sup>th</sup> May 2019	no trigger	YES	no trigger	YES
Residence	24 <sup>th</sup> May 2019	0.66	YES	80.1	YES

## Peppertree Quarry Environmental Monitoring Report

North West Boundary	21 <sup>st</sup> May 2019	1.04	YES	104.7	YES
North East Boundary	21 <sup>st</sup> May 2019	no trigger	YES	no trigger	YES
683 Marulan South Road	21 <sup>st</sup> May 2019	no trigger	YES	no trigger	YES
Residence	21 <sup>st</sup> May 2019	0.91	YES	80.1	YES
North West Boundary	14 <sup>th</sup> May 2019	0.99	YES	108.4	YES
North East Boundary	14 <sup>th</sup> May 2019	no trigger	YES	no trigger	YES
683 Marulan South Road	14 <sup>th</sup> May 2019	no trigger	YES	no trigger	YES
Residence	14 <sup>th</sup> May 2019	1.04	YES	80.1	YES
North West Boundary	9 <sup>th</sup> May 2019	0.95	YES	104.7	YES
North East Boundary	9 <sup>th</sup> May 2019	no trigger	YES	no trigger	YES
683 Marulan South Road	9 <sup>th</sup> May 2019	no trigger	YES	no trigger	YES
Residence	9 <sup>th</sup> May 2019	1.09	YES	80.1	YES
North West Boundary	7 <sup>th</sup> May 2019	0.8	YES	104.7	YES
North East Boundary	7 <sup>th</sup> May 2019	no trigger	YES	no trigger	YES
683 Marulan South Road	7 <sup>th</sup> May 2019	no trigger	YES	no trigger	YES
Residence	7 <sup>th</sup> May 2019	0.88	YES	80.1	YES
North West Boundary	2 <sup>nd</sup> May 2019	no trigger	YES	no trigger	YES
North East Boundary	2 <sup>nd</sup> May 2019	no trigger	YES	no trigger	YES
683 Marulan South Road	2 <sup>nd</sup> May 2019	no trigger	YES	no trigger	YES
Residence	2 <sup>nd</sup> May 2019	no trigger	YES	no trigger	YES
North West Boundary	1 <sup>st</sup> May 2019	0.48	YES	104.7	YES
North East Boundary	1 <sup>st</sup> May 2019	no trigger	YES	no trigger	YES
683 Marulan South Road	1 <sup>st</sup> May 2019	no trigger	YES	no trigger	YES
Residence	1 <sup>st</sup> May 2019	no trigger	YES	no trigger	YES
North West Boundary	24 <sup>th</sup> April 2019	0.920	YES	105.2	YES
North East Boundary	24 <sup>th</sup> April 2019	no trigger	YES	no trigger	YES
683 Marulan South Road	24 <sup>th</sup> April 2019	no trigger	YES	no trigger	YES
Residence	24 <sup>th</sup> April 2019		YES	no trigger	YES
North West Boundary	15 <sup>th</sup> April 2019	no trigger	YES	no trigger	YES
North East Boundary	15 <sup>th</sup> April 2019	no trigger	YES	no trigger	YES
683 Marulan South Road	15 <sup>th</sup> April 2019	no trigger	YES	no trigger	YES
Residence	15 <sup>th</sup> April 2019	no trigger	YES	no trigger	YES
North West Boundary	9 <sup>th</sup> April 2019	0.21	YES	98.3	YES
North East Boundary	9 <sup>th</sup> April 2019	no trigger	YES	no trigger	YES
683 Marulan South Road	9 <sup>th</sup> April 2019	no trigger	YES	no trigger	YES
Residence	9 <sup>th</sup> April 2019	no trigger	YES	no trigger	YES
North West Boundary	4 <sup>th</sup> April 2019	no trigger	YES	no trigger	YES
North East Boundary	4 <sup>th</sup> April 2019	no trigger	YES	no trigger	YES
683 Marulan South Road	4 <sup>th</sup> April 2019	no trigger	YES	no trigger	YES
Residence	4 <sup>th</sup> April 2019	1.7	YES	80.1	YES
North West Boundary	1 <sup>st</sup> April 2019	no trigger	YES	no trigger	YES
North East Boundary	1 <sup>st</sup> April 2019	no trigger	YES	no trigger	YES
683 Marulan South Road	1 <sup>st</sup> April 2019	no trigger	YES	no trigger	YES

## Peppertree Quarry Environmental Monitoring Report

Residence	1 <sup>st</sup> April 2019	0.34	YES	80.1	YES
North West Boundary	27 <sup>th</sup> March 2019	no trigger	YES	no trigger	YES
North East Boundary	27 <sup>th</sup> March 2019	no trigger	YES	no trigger	YES
683 Marulan South Road	27 <sup>th</sup> March 2019	no trigger	YES	no trigger	YES
Residence	27 <sup>th</sup> March 2019	0.24	YES	80.1	YES
North West Boundary	14 <sup>th</sup> March 2019	1	YES	104.8	YES
North East Boundary	14 <sup>th</sup> March 2019	no trigger	YES	no trigger	YES
683 Marulan South Road	14 <sup>th</sup> March 2019	no trigger	YES	no trigger	YES
Residence	14 <sup>th</sup> March 2019	1.11	YES	103.7	YES
North West Boundary	11 <sup>th</sup> March 2019	0.23	YES	95.8	YES
North East Boundary	11 <sup>th</sup> March 2019	no trigger	YES	no trigger	YES
683 Marulan South Road	11 <sup>th</sup> March 2019	no trigger	YES	no trigger	YES
Residence	11 <sup>th</sup> March 2019	0.25	YES	98.5	YES
North West Boundary	7 <sup>th</sup> March 2019	0.4	YES	95.7	YES
North East Boundary	7 <sup>th</sup> March 2019	no trigger	YES	no trigger	YES
683 Marulan South Road	7 <sup>th</sup> March 2019	no trigger	YES	no trigger	YES
Residence	7 <sup>th</sup> March 2019	0.43	YES	98.4	YES
North West Boundary	28 <sup>th</sup> February 2019	no trigger	YES	no trigger	YES
North East Boundary	28 <sup>th</sup> February 2019	no trigger	YES	no trigger	YES
683 Marulan South Road	28 <sup>th</sup> February 2019	no trigger	YES	no trigger	YES
Residence	28 <sup>th</sup> February 2019	no trigger	YES	no trigger	YES
North West Boundary	26 <sup>th</sup> February 2019	0.34	YES	99.2	YES
North East Boundary	26 <sup>th</sup> February 2019	no trigger	YES	no trigger	YES
683 Marulan South Road	26 <sup>th</sup> February 2019	no trigger	YES	no trigger	YES
Residence	26 <sup>th</sup> February 2019	0.43	YES	100.1	YES
North West Boundary	21 <sup>st</sup> February 2019	0.84	YES	106.8	YES
North East Boundary	21 <sup>st</sup> February 2019	no trigger	YES	no trigger	YES
683 Marulan South Road	21 <sup>st</sup> February 2019	no trigger	YES	no trigger	YES
Residence	21 <sup>st</sup> February 2019	1.18	YES	101.7	YES
North West Boundary	14 <sup>th</sup> February 2019	0.29	YES	97.7	YES
North East Boundary	14 <sup>th</sup> February 2019	no trigger	YES	no trigger	YES
683 Marulan South Road	14 <sup>th</sup> February 2019	no trigger	YES	no trigger	YES
Residence	14 <sup>th</sup> February 2019	0.28	YES	101.7	YES
North West Boundary	11 <sup>th</sup> February 2019	0.57	YES	104.3	YES
North East Boundary	11 <sup>th</sup> February 2019	no trigger	YES	no trigger	YES
683 Marulan South Road	11 <sup>th</sup> February 2019	no trigger	YES	no trigger	YES
Residence	11 <sup>th</sup> February 2019	0.7	YES	100.2	YES
North West Boundary	7 <sup>th</sup> February 2019	0.87	YES	106.6	YES
North East Boundary	7 <sup>th</sup> February 2019	no trigger	YES	no trigger	YES
683 Marulan South Road	7 <sup>th</sup> February 2019	0.22	YES	102	YES
Residence	7 <sup>th</sup> February 2019	1.19	YES	100.1	YES
North West Boundary	24 <sup>th</sup> January 2019	1.26	YES	108.7	YES



## Peppertree Quarry Environmental Monitoring Report

North East Boundary	24 <sup>th</sup> January 2019	no trigger	YES	no trigger	YES
683 Marulan South Road	24 <sup>th</sup> January 2019	no trigger	YES	no trigger	YES
Residence	24 <sup>th</sup> January 2019	1.66	YES	105.7	YES
North West Boundary	17 <sup>th</sup> January 2019	0.41	YES	112.4	YES
North East Boundary	17 <sup>th</sup> January 2019	no trigger	YES	no trigger	YES
683 Marulan South Road	17 <sup>th</sup> January 2019	no trigger	YES	no trigger	YES
Residence	17 <sup>th</sup> January 2019	0.6	YES	106.6	YES
North West Boundary	11 <sup>th</sup> January 2019	1.29	YES	107.3	YES
North East Boundary	11 <sup>th</sup> January 2019	no trigger	YES	no trigger	YES
683 Marulan South Road	11 <sup>th</sup> January 2019	no trigger	YES	no trigger	YES
Residence	11 <sup>th</sup> January 2019	1.18	YES	104.8	YES
North West Boundary	20 <sup>th</sup> December 2018	0.89	YES	107.3	YES
North East Boundary	20 <sup>th</sup> December 2018	no trigger	YES	no trigger	YES
683 Marulan South Road	20 <sup>th</sup> December 2018	no trigger	YES	no trigger	YES
Residence	20 <sup>th</sup> December 2018	0.96	YES	104.2	YES
North West Boundary	18 <sup>th</sup> December 2018	1.23	YES	104.7	YES
North East Boundary	18 <sup>th</sup> December 2018	no trigger	YES	no trigger	YES
683 Marulan South Road	18 <sup>th</sup> December 2018	no trigger	YES	no trigger	YES
Residence	18 <sup>th</sup> December 2018	1.01	YES	104.8	YES
North West Boundary	12 <sup>th</sup> December 2018	no trigger	YES	no trigger	YES
North East Boundary	12 <sup>th</sup> December 2018	no trigger	YES	no trigger	YES
683 Marulan South Road	12 <sup>th</sup> December 2018	no trigger	YES	no trigger	YES
Residence	12 <sup>th</sup> December 2018	no trigger	YES	no trigger	YES
North West Boundary	7 <sup>th</sup> December 2018	1.39	YES	109	YES
North East Boundary	7 <sup>th</sup> December 2018	no trigger	YES	no trigger	YES
683 Marulan South Road	7 <sup>th</sup> December 2018	no trigger	YES	no trigger	YES
Residence	7 <sup>th</sup> December 2018	0.84	YES	104.2	YES
North West Boundary	29 <sup>th</sup> November 2018	1.02	YES	108.0	YES
North East Boundary	29 <sup>th</sup> November 2018	no trigger	YES	no trigger	YES
683 Marulan South Road	29 <sup>th</sup> November 2018	no trigger	YES	no trigger	YES
Residence	29 <sup>th</sup> November 2018	1.12	YES	100.1	YES
North West Boundary	24 <sup>th</sup> November 2018	0.81	YES	101.1	YES
North East Boundary	24 <sup>th</sup> November 2018	no trigger	YES	no trigger	YES
683 Marulan South Road	24 <sup>th</sup> November 2018	no trigger	YES	no trigger	YES
Residence	24 <sup>th</sup> November 2018	0.9	YES	100.1	YES
North West Boundary	16 <sup>th</sup> November 2018	1.3	YES	108	YES
North East Boundary	16 <sup>th</sup> November 2018	no trigger	YES	no trigger	YES
683 Marulan South Road	16 <sup>th</sup> November 2018	no trigger	YES	no trigger	YES
Residence	16 <sup>th</sup> November 2018	1.0	YES	105.5	YES
North West Boundary	12 <sup>th</sup> November 2018	1.52	YES	107.3	YES
North East Boundary	12 <sup>th</sup> November 2018	no trigger	YES	no trigger	YES
683 Marulan South Road	12 <sup>th</sup> November 2018	no trigger	YES	no trigger	YES
Residence	12 <sup>th</sup> November 2018	0.89	YES	114.4	YES

## Peppertree Quarry Environmental Monitoring Report

North West Boundary	31 <sup>st</sup> October 2018	0.52	YES	105.8	YES
North East Boundary	31 <sup>st</sup> October 2018	no trigger	YES	no trigger	YES
683 Marulan South Road	31 <sup>st</sup> October 2018	0.11	YES	100.4	YES
Residence	31 <sup>st</sup> October 2018	0.91	YES	102.8	YES
North West Boundary	25 <sup>th</sup> October 2018	0.62	YES	103.8	YES
North East Boundary	25 <sup>th</sup> October 2018	no trigger	YES	no trigger	YES
683 Marulan South Road	25 <sup>th</sup> October 2018	0.11	YES	100.3	YES
Residence	25 <sup>th</sup> October 2018	0.57	YES	101.8	YES
North West Boundary	18 <sup>th</sup> October 2018	0.65	YES	105.4	YES
North East Boundary	18 <sup>th</sup> October 2018	no trigger	YES	no trigger	YES
683 Marulan South Road	18 <sup>th</sup> October 2018	no trigger	YES	no trigger	YES
Residence	18 <sup>th</sup> October 2018	0.9	YES	103.2	YES
North West Boundary	11 <sup>th</sup> October 2018	0.57	YES	109.8	YES
North East Boundary	11 <sup>th</sup> October 2018	no trigger	YES	no trigger	YES
683 Marulan South Road	11 <sup>th</sup> October 2018	0.13	YES	100.1	YES
Residence	11 <sup>th</sup> October 2018	0.73	YES	106.9	YES
North West Boundary	20 <sup>th</sup> September 2018	no trigger	YES	no trigger	YES
North East Boundary	20 <sup>th</sup> September 2018	0.3	YES	110.3	YES
683 Marulan South Road	20 <sup>th</sup> September 2018	no trigger	YES	100.5	YES
Residence	20 <sup>th</sup> September 2018	0.8	YES	104.4	YES
North West Boundary	12 <sup>th</sup> September 2018	no trigger	YES	no trigger	YES
North East Boundary	12 <sup>th</sup> September 2018	no trigger	YES	no trigger	YES
683 Marulan South Road	12 <sup>th</sup> September 2018	no trigger	YES	no trigger	YES
Residence	12 <sup>th</sup> September 2018	no trigger	YES	no trigger	YES
North West Boundary	6 <sup>th</sup> September 2018	1.05	YES	105.6	YES
North East Boundary	6 <sup>th</sup> September 2018	no trigger	YES	no trigger	YES
683 Marulan South Road	6 <sup>th</sup> September 2018	no trigger	YES	no trigger	YES
Residence	6 <sup>th</sup> September 2018	0.6	YES	105.9	YES
North West Boundary	5 <sup>th</sup> September 2018	1.04	YES	109.8	YES
North East Boundary	5 <sup>th</sup> September 2018	no trigger	YES	no trigger	YES
683 Marulan South Road	5 <sup>th</sup> September 2018	0.23	YES	104.2	YES
Residence	5 <sup>th</sup> September 2018	1.56	YES	108.9	YES
North West Boundary	30 <sup>th</sup> August 2018	1.34	YES	113	YES
North East Boundary	30 <sup>th</sup> August 2018	no trigger	YES	no trigger	YES
683 Marulan South Road	30 <sup>th</sup> August 2018	0.2	YES	99.4	YES
Residence	30 <sup>th</sup> August 2018	1.31	YES	106.5	YES
North West Boundary	21 <sup>st</sup> August 2018	1.07	YES	109.9	YES
North East Boundary	21 <sup>st</sup> August 2018	no trigger	YES	no trigger	YES
683 Marulan South Road	21 <sup>st</sup> August 2018	0.11	YES	99.2	YES
Residence	21 <sup>st</sup> August 2018	1.14	YES	108.2	YES
North West Boundary	9 <sup>th</sup> August 2018	1.17	YES	107.3	YES
North East Boundary	9 <sup>th</sup> August 2018	no trigger	YES	no trigger	YES

## Peppertree Quarry Environmental Monitoring Report

683 Marulan South Road	9 <sup>th</sup> August 2018	no trigger	YES	no trigger	YES
Residence	9 <sup>th</sup> August 2018	0.7	YES	110.3	YES
North West Boundary	2nd August 2018	0.88	YES	103	YES
North East Boundary	2nd August 2018	no trigger	YES	no trigger	YES
683 Marulan South Road	2nd August 2018	no trigger	YES	no trigger	YES
Residence	2nd August 2018	0.59	YES	107.3	YES
North West Boundary	26 <sup>th</sup> July 2018	0.73	YES	no trigger	YES
North East Boundary	26 <sup>th</sup> July 2018	no trigger	YES	no trigger	YES
683 Marulan South Road	26 <sup>th</sup> July 2018	no trigger	YES	no trigger	YES
Residence	26 <sup>th</sup> July 2018	1.13	YES	102.5	YES
North West Boundary	20 <sup>th</sup> July 2018	no trigger	YES	no trigger	YES
North East Boundary	20 <sup>th</sup> July 2018	no trigger	YES	no trigger	YES
683 Marulan South Road	20 <sup>th</sup> July 2018	no trigger	YES	no trigger	YES
Residence	20 <sup>th</sup> July 2018	no data	YES	no data	YES
North West Boundary	12 <sup>th</sup> July 2018	0.94	YES	104.9	YES
North East Boundary	12 <sup>th</sup> July 2018	no trigger	YES	no trigger	YES
683 Marulan South Road	12 <sup>th</sup> July 2018	no trigger	YES	no trigger	YES
Residence	12 <sup>th</sup> July 2018	0.82	YES	105	YES
North West Boundary	5 <sup>th</sup> July 2018	1.14	YES	110.1	YES
North East Boundary	5 <sup>th</sup> July 2018	no trigger	YES	no trigger	YES
683 Marulan South Road	5 <sup>th</sup> July 2018	no trigger	YES	no trigger	YES
Residence	5 <sup>th</sup> July 2018	0.65	YES	106.9	YES
North West Boundary	28th June 2018	0.98	YES	105.4	YES
North East Boundary	28th June 2018	no trigger	YES	no trigger	YES
683 Marulan South Road	28th June 2018	0.21	YES	100.9	YES
Residence	28th June 2018	1.64	YES	103.2	YES
North West Boundary	22 <sup>nd</sup> June 2018	0.88	YES	107.3	YES
North East Boundary	22 <sup>nd</sup> June 2018	no trigger	YES	no trigger	YES
683 Marulan South Road	22 <sup>nd</sup> June 2018	0.15	YES	101.7	YES
Residence	22 <sup>nd</sup> June 2018	no trigger	YES	no trigger	YES
North West Boundary	14 <sup>th</sup> June 2018	1.53	YES	110	YES
North East Boundary	14 <sup>th</sup> June 2018	no trigger	YES	no trigger	YES
683 Marulan South Road	14 <sup>th</sup> June 2018	0.14	YES	100.5	YES
Residence	14 <sup>th</sup> June 2018	no trigger	YES	no trigger	YES
North West Boundary	6 <sup>th</sup> June 2018	1.32	YES	108.8	YES
North East Boundary	6 <sup>th</sup> June 2018	no trigger	YES	no trigger	YES
683 Marulan South Road	6 <sup>th</sup> June 2018	0.21	YES	99.7	YES
Residence	6 <sup>th</sup> June 2018	no trigger	YES	no trigger	YES
North West Boundary	31st May 2018	0.9	YES	108.1	YES
North East Boundary	31st May 2018	no trigger	YES	no trigger	YES
683 Marulan South Road	31st May 2018	0.14	YES	99.6	YES
Residence	31st May 2018	no trigger	YES	no trigger	YES

## Peppertree Quarry Environmental Monitoring Report

North West Boundary	24 <sup>th</sup> May 2018	0.49	YES	104.9	YES
North East Boundary	24 <sup>th</sup> May 2018	no trigger	YES	no trigger	YES
683 Marulan South Road	24 <sup>th</sup> May 2018	no trigger	YES	no trigger	YES
Residence	24 <sup>th</sup> May 2018	0.63	YES	102.5	YES
North West Boundary	17th May 2018	0.73	YES	105.9	YES
North East Boundary	17th May 2018	no trigger	YES	no trigger	YES
683 Marulan South Road	17th May 2018	0.11	YES	100.9	YES
Residence	17th May 2018	0.79	YES	106.7	YES
North West Boundary	10 May 2018	no trigger	YES	no trigger	YES
North East Boundary	10 May 2018	no trigger	YES	no trigger	YES
683 Marulan South Road	10 May 2018	no trigger	YES	no trigger	YES
Residence	10 May 2018	0.04	YES	112.1	YES
North West Boundary	3 May 2018	no trigger	YES	no trigger	YES
North East Boundary	3 May 2018	no trigger	YES	no trigger	YES
683 Marulan South Road	3 May 2018	no trigger	YES	no trigger	YES
Residence	3 May 2018	0.63	YES	103.6	YES
North West Boundary	19 April 2018	0.95	YES	108.9	YES
North East Boundary	19 April 2018	no trigger	YES	no trigger	YES
683 Marulan South Road	19 April 2018	0.12	YES	100.8	YES
Residence	19 April 2018	no trigger	YES	no trigger	YES
North West Boundary	12 April 2018	no data available	YES	no data available	YES
North East Boundary	12 April 2018	no data available	YES	no data available	YES
683 Marulan South Road	12 April 2018	no data available	YES	no data available	YES
Residence	12 April 2018	no data available	YES	no data available	YES
North West Boundary	22nd March 2018	1.05	YES	110	YES
North East Boundary	22nd March 2018	no trigger	YES	no trigger	YES
683 Marulan South Road	22nd March 2018	0.14	YES	108.2	YES
Residence	22nd March 2018	0.98	YES	114.9	YES
North West Boundary	15 march 2018	1.1	YES	99.3	YES
North East Boundary	15 march 2018	no trigger	YES	no trigger	YES
683 Marulan South Road	15 march 2018	0.1	YES	99.2	YES
Residence	15 march 2018	1.45	YES	98.5	YES
North West Boundary	12 march 2018	1.9	YES	108.4	YES
North East Boundary	12 march 2018	no trigger	YES	no trigger	YES
683 Marulan South Road	12 march 2018	0.17	YES	100.3	YES
Residence	12 march 2018	1.2	YES	103.2	YES
North West Boundary	1st March 2018	1.3	YES	106.4	YES
North East Boundary	1st March 2018	no trigger	YES	no trigger	YES
683 Marulan South Road	1st March 2018	no trigger	YES	no trigger	YES
Residence	1st March 2018	1.6	YES	105	YES
North West Boundary	20 February 2018	1.2	YES	110.5	YES
North East Boundary	20 February 2018	no trigger	YES	no trigger	YES
683 Marulan South Road	20 February 2018	0.1	YES	102.4	YES

## Peppertree Quarry Environmental Monitoring Report

Residence	20 February 2018	1.75	YES	109.9	YES
North West Boundary	16 February 2018	4.1	YES	109.1	YES
North East Boundary	16 February 2018	no trigger	YES	no trigger	YES
683 Marulan South Road	16 February 2018	0.17	YES	106.4	YES
Residence	16 February 2018	1.3	YES	110.5	YES
North West Boundary	8 February 2018	no trigger	YES	no trigger	YES
North East Boundary	8 February 2018	no trigger	YES	no trigger	YES
683 Marulan South Road	8 February 2018	no trigger	YES	no trigger	YES
Residence	8 February 2018	no trigger	YES	no trigger	YES
North West Boundary	1 February 2018	1.1	YES	103.8	YES
North East Boundary	1 February 2018	no trigger	YES	no trigger	YES
683 Marulan South Road	1 February 2018	no trigger	YES	no trigger	YES
Residence	1 February 2018	0.65	YES	103.5	YES
North West Boundary	25 January 2018	no trigger	YES	no trigger	YES
North East Boundary	25 January 2018	no trigger	YES	no trigger	YES
683 Marulan South Road	25 January 2018	no trigger	YES	no trigger	YES
Residence	25 January 2018	0.6	YES	111.9	YES
North West Boundary	11 January 2018	0.85	YES	98.4	YES
North East Boundary	11 January 2018	no trigger	YES	no trigger	YES
683 Marulan South Road	11 January 2018	0.13	YES	100	YES
Residence	11 January 2018	1.35	YES	99.5	YES
North West Boundary	21 December 2017	0.95	YES	108.9	YES
North East Boundary	21 December 2017	no trigger	YES	no trigger	YES
683 Marulan South Road	21 December 2017	0.09	YES	101.2	YES
Residence	21 December 2017	0.8	YES	108.3	YES
North West Boundary	14 December 2017	no trigger	YES		YES
North East Boundary	14 December 2017	no trigger	YES	no trigger	YES
683 Marulan South Road	14 December 2017	no trigger	YES	no trigger	YES
Residence	14 December 2017	no trigger	YES		YES
North West Boundary	8 December 2017	1.15	YES	102	YES
North East Boundary	8 December 2017	no trigger	YES	no trigger	YES
683 Marulan South Road	8 December 2017	no trigger	YES	no trigger	YES
Residence	8 December 2017	0.85	YES	106.2	YES
North West Boundary	4 December 2017	1.16	YES		YES
North East Boundary	4 December 2017	no trigger	YES	no trigger	YES
683 Marulan South Road	4 December 2017	no trigger	YES	no trigger	YES
Residence	4 December 2017	1.65	YES		YES
North West Boundary	16 November 2017	0.65	YES	105.7	YES
North East Boundary	16 November 2017	no trigger	YES	no trigger	YES
683 Marulan South Road	16 November 2017	0.1	YES	no trigger	YES
Residence	16 November 2017	0.7	YES	106.5	YES
North West Boundary	13 November 2017	0.8	YES	105.8	YES
North East Boundary	13 November 2017	no trigger	YES	no trigger	YES

## Peppertree Quarry Environmental Monitoring Report

683 Marulan South Road	13 November 2017	no trigger	YES	no trigger	YES
Residence	13 November 2017	0.7	YES	107.1	YES
North West Boundary	2 November 2017	0.75	YES	100.3	YES
North East Boundary	2 November 2017	no trigger	YES	no trigger	YES
683 Marulan South Road	2 November 2017	0.11	YES	no trigger	YES
Residence	2 November 2017	0.8	YES	100.2	YES
North West Boundary	24 October 2017	0.5	YES	101	YES
North East Boundary	24 October 2017	no trigger	YES	no trigger	YES
683 Marulan South Road	24 October 2017	no trigger	YES	no trigger	YES
Residence	24 October 2017	0.6	YES	100.7	YES
North West Boundary	13 October 2017	1.25	YES	100.3	YES
North East Boundary	13 October 2017	no trigger	YES	no trigger	YES
683 Marulan South Road	13 October 2017	0.9	YES	no trigger	YES
Residence	13 October 2017	0.85	YES	105.1	YES
North West Boundary	21 September 2017	0.8	YES	102.4	YES
North East Boundary	21 September 2017	No trigger	YES	No trigger	YES
683 Marulan South Road	21 September 2017	0.17	YES	98.1	YES
Residence	21 September 2017	1.28	YES	108	YES
North West Boundary	11 September 2017	No trigger	YES	No trigger	YES
North East Boundary	11 September 2017	No trigger	YES	No trigger	YES
683 Marulan South Road	11 September 2017	0.8	YES	98.9	YES
Residence	11 September 2017	No trigger	YES	No trigger	YES
North West Boundary	31 August 2017	1.55	YES	102.4	YES
North East Boundary	31 August 2017	No trigger	YES	No trigger	YES
683 Marulan South Road	31 August 2017	0.22	YES	97	YES
Residence	31 August 2017	1.45	YES	102.9	YES
North West Boundary	17 August 2017	1.6	YES	106.6	YES
North East Boundary	17 August 2017	No trigger	YES	No trigger	YES
683 Marulan South Road	17 August 2017	0.24	YES	112.9	YES
Residence	17 August 2017	1.75	YES	102.9	YES
North West Boundary	11 August 2017	1.15	YES	108.6	YES
North East Boundary	11 August 2017	No trigger	YES	No trigger	YES
683 Marulan South Road	11 August 2017	0.12	YES	101.1	YES
Residence	11 August 2017	1.00	YES	102.3	YES
North West Boundary	4 August 2017	0.9	YES	104.1	YES
North East Boundary	4 August 2017	No trigger	YES	No trigger	YES
683 Marulan South Road	4 August 2017	0.12	YES	103	YES
Residence	4 August 2017	0.8	YES	105.3	YES
North West Boundary	27 July 2017	0.91	YES	108.8	YES
North East Boundary	27 July 2017	No trigger	YES	No trigger	YES
683 Marulan South Road	27 July 2017	No trigger	YES	No trigger	YES
Residence	27 July 2017	0.68	YES	109	YES

## Peppertree Quarry Environmental Monitoring Report

North West Boundary	20 July 2017	1.07	YES	109.3	YES
North East Boundary	20 July 2017	No trigger	YES	No trigger	YES
683 Marulan South Road	20 July 2017	0.12	YES	103.5	YES
Residence	20 July 2017	1.29	YES	117.4	YES
North West Boundary	6 July 2017	1.02	YES	106.4	YES
North East Boundary	6 July 2017	No trigger	YES	No trigger	YES
683 Marulan South Road	6 July 2017	0.18	YES	98.1	YES
Residence	6 July 2017	1.31	YES	105.8	YES
North West Boundary	29 June 2017	2.00	YES	103.6	YES
North East Boundary	29 June 2017	No trigger	YES	No trigger	YES
683 Marulan South Road	29 June 2017	0.33	YES	97.3	YES
Residence	29 June 2017	2.45	YES	103.1	YES
North West Boundary	23 June 2017	0.75	YES	100.6	YES
North East Boundary	23 June 2017	No trigger	YES	No trigger	YES
683 Marulan South Road	23 June 2017	0.24	YES	96.4	YES
Residence	23 June 2017	0.75	YES	101.5	YES
North West Boundary	15 June 2017	No trigger	YES	No trigger	YES
North East Boundary	15 June 2017	No trigger	YES	No trigger	YES
683 Marulan South Road	15 June 2017	No trigger	YES	No trigger	YES
Residence	15 June 2017	No trigger	YES	No trigger	YES
North West Boundary	9 June 2017	0.7	YES	102.9	YES
North East Boundary	9 June 2017	No trigger	YES	No trigger	YES
683 Marulan South Road	9 June 2017	0.24	YES	98.7	YES
Residence	9 June 2017	1.35	YES	101.7	YES
North West Boundary	6 June 2017	0.7	YES	No trigger	YES
North East Boundary	6 June 2017	No trigger	YES	No trigger	YES
683 Marulan South Road	6 June 2017	0.15	YES	96.1	YES
Residence	6 June 2017	0.7	YES	105.6	YES
North West Boundary	26 may 2017	0.75	YES	No trigger	YES
North East Boundary	26 may 2017	No trigger	YES	No trigger	YES
683 Marulan South Road	26 may 2017	0.8	YES	105.3	YES
Residence	26 may 2017	0.9	YES	105.8	YES
North West Boundary	18 may 2017	0.55	YES	104.7	YES
North East Boundary	18 may 2017	No trigger	YES	No trigger	YES
683 Marulan South Road	18 may 2017	0.27	YES	100	YES
Residence	18 may 2017	1.00	YES	105.3	YES
North West Boundary	11 May 2017	No trigger	YES	No trigger	YES
North East Boundary	11 May 2017	No trigger	YES	No trigger	YES
683 Marulan South Road	11 May 2017	0.85	YES	105.8	YES
Residence	11 May 2017	0.09	YES	102.3	YES
North West Boundary	4 May 2017	No trigger	YES	No trigger	YES
North East Boundary	4 May 2017	No trigger	YES	No trigger	YES
683 Marulan South Road	4 May 2017	1.05	YES	104.2	YES

## Peppertree Quarry Environmental Monitoring Report

Residence	4 May 2017	0.17	YES	97.2	YES
North West Boundary	20 April 2017	No trigger	YES	No trigger	YES
North East Boundary	20 April 2017	No trigger	YES	No trigger	YES
683 Marulan South Road	20 April 2017	No trigger	YES	No trigger	YES
Residence	20 April 2017	No trigger	YES	No trigger	YES
North West Boundary	13 April 2017	No trigger	YES	No trigger	YES
North East Boundary	13 April 2017	No trigger	YES	No trigger	YES
683 Marulan South Road	13 April 2017	0.8	YES	105.3	YES
Residence	13 April 2017	0.13	YES	96.9	YES
North West Boundary	6 April 2017	No trigger	YES	No trigger	YES
North East Boundary	6 April 2017	No trigger	YES	No trigger	YES
683 Marulan South Road	6 April 2017	1.1	YES	105.4	YES
Residence	6 April 2017	0.24	YES	99.1	YES
North West Boundary	23 March 2017	1.25	YES	105.5	YES
North East Boundary	23 March 2017	No trigger	YES	No trigger	YES
683 Marulan South Road	23 March 2017	0.14	YES	105	YES
Residence	23 March 2017	1.1	YES	108.6	YES
North West Boundary	9 March 2017	0.88	YES	102.4	YES
North East Boundary	9 March 2017	No trigger	YES	No trigger	YES
683 Marulan South Road	9 March 2017	0.19	YES	99.7	YES
Residence	9 March 2017	0.9	YES	104.8	YES
North West Boundary	23 February 2017	115.6	YES	0.65	YES
North East Boundary	23 February 2017	No trigger	YES	No trigger	YES
683 Marulan South Road	23 February 2017	99.2	YES	0.14	YES
Residence	23 February 2017	111.1	YES	0.75	YES
North West Boundary	16 February 2017	100.3	YES	0.9	YES
North East Boundary	16 February 2017	No trigger	YES	No trigger	YES
683 Marulan South Road	16 February 2017	96.9	YES	0.16	YES
Residence	16 February 2017	101.9	YES	1.75	YES
North West Boundary	9 February 2017	100.3	YES	0.75	YES
North East Boundary	9 February 2017	No trigger	YES	No trigger	YES
683 Marulan South Road	9 February 2017	98.6	YES	0.33	YES
Residence	9 February 2017	99.8	YES	1.6	YES
North West Boundary	2 February 2017	No trigger	YES	0.87	YES
North East Boundary	2 February 2017	No trigger	YES	No trigger	YES
683 Marulan South Road	2 February 2017	105.6	YES	0.19	YES
Residence	2 February 2017	106.2	YES	2.15	YES
North West Boundary	23 January 2017	106	YES	0.81	YES
North East Boundary	23 January 2017	No trigger	YES	No trigger	YES
683 Marulan South Road	23 January 2017	100.8	YES	0.13	YES
Residence	23 January 2017	105.8	YES	0.75	YES
North West Boundary	12 January 2017	110.4	YES	1.06	YES



## Peppertree Quarry Environmental Monitoring Report

North East Boundary	12 January 2017	No trigger	YES	No trigger	YES
683 Marulan South Road	12 January 2017	100.8	YES	0.25	YES
Residence	12 January 2017	No trigger	YES	2.01	YES
North West Boundary	9 January 2017	No trigger	YES	No trigger	YES
North East Boundary	9 January 2017	No trigger	YES	No trigger	YES
683 Marulan South Road	9 January 2017	95.6	YES	0.13	YES
Residence	9 January 2017	No trigger	YES	0.82	YES
North West Boundary	5 January 2017	94.4	YES	No trigger	YES
North East Boundary	5 January 2017	No trigger	YES	No trigger	YES
683 Marulan South Road	5 January 2017	No trigger	YES	No trigger	YES
Residence	5 January 2017	No trigger	YES	No trigger	YES
North West Boundary	20 December 2016	101.5	YES	0.45	YES
North East Boundary	20 December 2016	No trigger	YES	No trigger	YES
683 Marulan South Road	20 December 2016	No trigger	YES	No trigger	YES
Pace Residence	20 December 2016	No trigger	YES	0.7	YES
North West Boundary	15 December 2016	104.4	YES	0.95	YES
North East Boundary	15 December 2016	No trigger	YES	No trigger	YES
683 Marulan South Road	15 December 2016	102.4	YES	0.4	YES
Residence	15 December 2016	No trigger	YES	1.9	YES
North West Boundary	8th December 2016	96.3	YES	0.75	YES
North East Boundary	8th December 2016	No trigger	YES	No trigger	YES
683 Marulan South Road	8th December 2016	112.5	YES	0.16	YES
Residence	8th December 2016	98.2	YES	1.3	YES
North West Boundary	1st December 2016	105.6	YES	1.1	YES
North East Boundary	1st December 2016	No trigger	YES	No trigger	YES
683 Marulan South Road	1st December 2016	104.4	YES	0.21	YES
Residence	1st December 2016	106.6	YES	2.05	YES
North West Boundary	28th November 2016	104.7	YES	0.8	YES
North East Boundary	28th November 2016	No trigger	YES	No trigger	YES
683 Marulan South Road	28th November 2016	103.1	YES	0.18	YES
Residence	28th November 2016	108.3	YES	1.6	YES
North West Boundary	24th November 2016	107.3	YES	3.25	YES
North East Boundary	24th November 2016	No trigger	YES	No trigger	YES
683 Marulan South Road	24th November 2016	99.1	YES	0.49	YES
Residence	24th November 2016	109.9	YES	3.35	YES
North West Boundary	17th November 2016	No trigger	YES	No trigger	YES
North East Boundary	17th November 2016	No trigger	YES	No trigger	YES
683 Marulan South Road	17th November 2016	No trigger	YES	No trigger	YES
Residence	17th November 2016	No trigger	YES	No trigger	YES
North West Boundary	10th November 2016	1.25	YES	100.9	YES
North East Boundary	10th November 2016	No trigger	YES	No trigger	YES
683 Marulan South Road	10th November 2016	0.14	YES	103.1	YES
Pace Residence	10th November 2016	1.00	YES	101.7	YES

## Peppertree Quarry Environmental Monitoring Report

North West Boundary	8th November 2016	1.00	YES	100.1	YES
North East Boundary	8th November 2016	No trigger	YES	No trigger	YES
683 Marulan South Road	8th November 2016	0.14	YES	101.9	YES
Residence	8th November 2016	0.85	YES	104.4	YES
North West Boundary	27th October 2016	1.5	Yes	107.3	YES
North East Boundary	27th October 2016	No trigger	YES	No trigger	YES
683 Marulan South Road	27th October 2016	0.26	Yes	100.8	YES
Residence	27th October 2016	2.30	YES	105.8	YES
North West Boundary	18th October 2016	1.2	YES	106.1	YES
North East Boundary	18th October 2016	No trigger	YES	No trigger	YES
683 Marulan South Road	18th October 2016	No trigger	YES	No trigger	YES
Residence	18th October 2016	No trigger	YES	No trigger	YES
North West Boundary	14th October 2016	1.8	YES	100.9	YES
North East Boundary	14th October 2016	No trigger	YES	No trigger	YES
683 Marulan South Road	14th October 2016	0.21	YES	100.8	YES
Residence	14th October 2016	No trigger	YES	No trigger	YES
North West Boundary	6th October 2016	1.5	YES	100.9	YES
North East Boundary	6th October 2016	No trigger	YES	No trigger	YES
683 Marulan South Road	6th October 2016	0.14	YES	98.1	YES
Residence	6th October 2016	No trigger	YES	No trigger	YES
North West Boundary	22nd September 2016	1.15	YES	104.1	YES
North East Boundary	22nd September 2016	No trigger	YES	No trigger	YES
683 Marulan South Road	22nd September 2016	No trigger	YES	No trigger	YES
Pace Residence	22nd September 2016	No trigger	YES	No trigger	YES
North West Boundary	21st September 2016	1.45	YES	103.6	YES
North East Boundary	21st September 2016	No trigger	YES	No trigger	YES
683 Marulan South Road	21st September 2016	No trigger	YES	No trigger	YES
Pace Residence	21st September 2016	No trigger	YES	No trigger	YES
North West Boundary	15th Sept 2016	1.05	YES	110.9	YES
North East Boundary	15th Sept 2016	No trigger	YES	No trigger	YES
683 Marulan South Road	15th Sept 2016	0.2	YES	97.5	YES
Pace Residence	15th Sept 2016	No trigger	YES	No trigger	YES
North West Boundary	5th September 2016	0.85	YES	105.6	YES
North East Boundary	5th September 2016	No trigger	YES	No trigger	YES
683 Marulan South Road	5th September 2016	No trigger	YES	No trigger	YES
Pace Residence	5th September 2016	No trigger	YES	No trigger	YES
North West Boundary	30 august 2016	No trigger	YES	No trigger	YES
North East Boundary	30 august 2016	No trigger	YES	No trigger	YES
683 Marulan South Road	30 august 2016	No trigger	YES	No trigger	YES

## Peppertree Quarry Environmental Monitoring Report

Pace Residence	30 august 2016	0.9	YES	103.2	YES
North West Boundary	25 august 2016	No trigger	YES	No trigger	YES
North East Boundary	25 august 2016	No trigger	YES	No trigger	YES
683 Marulan South Road	25 august 2016	No trigger	YES	No trigger	YES
Pace Residence	25 august 2016	1.7	YES	104.2	YES
North West Boundary	18th August 2016	No trigger	YES	No trigger	YES
North East Boundary	18th August 2016	No trigger	YES	No trigger	YES
683 Marulan South Road	18th August 2016	No trigger	YES	No trigger	YES
Pace Residence	18th August 2016	0.75	YES	101.1	YES
North West Boundary	11th August 2016	No trigger	YES	No trigger	YES
North East Boundary	11th August 2016	No trigger	YES	No trigger	YES
683 Marulan South Road	11th August 2016	No trigger	YES	No trigger	YES
Pace Residence	11th August 2016	0.9	YES	101.6	YES
North West Boundary	4 august 2016	No trigger	YES	No trigger	YES
North East Boundary	4 august 2016	No trigger	YES	No trigger	YES
683 Marulan South Road	4 august 2016	No trigger	YES	No trigger	YES
Pace Residence	4 august 2016	1.6	YES	103	YES
North West Boundary	21st July 2016	No trigger	YES	No trigger	YES
North East Boundary	21st July 2016	No trigger	YES	No trigger	YES
683 Marulan South Road	21st July 2016	No trigger	YES	No trigger	YES
Pace Residence	21st July 2016	0.95	YES	101.7	YES
North West Boundary	15th July 2016	1.40	YES	102.4	YES
North East Boundary	15th July 2016	No trigger	YES	No trigger	YES
683 Marulan South Road	15th July 2016	No trigger	YES	No trigger	YES
Pace Residence	15th July 2016	1.15	YES	101.3	YES
North West Boundary	30th June 2016	No trigger	YES	No trigger	YES
North East Boundary	30th June 2016	No trigger	YES	No trigger	YES
683 Marulan South Road	30th June 2016	No trigger	YES	No trigger	YES
Pace Residence	30th June 2016	No trigger	YES	No trigger	YES
North West Boundary	16th June 2016	No trigger	YES	No trigger	YES
North East Boundary	16th June 2016	No trigger	YES	No trigger	YES
683 Marulan South Road	16th June 2016	No trigger	YES	No trigger	YES
Pace Residence	16th June 2016	No trigger	YES	No trigger	YES
North West Boundary	2nd June 2016	No trigger	YES	No trigger	YES
North East Boundary	2nd June 2016	No trigger	YES	No trigger	YES
683 Marulan South Road	2nd June 2016	No trigger	YES	No trigger	YES
Pace Residence	2nd June 2016	No trigger	YES	No trigger	YES
North West Boundary	26th May 2016	No trigger	YES	No trigger	YES
North East Boundary	26th May 2016	No trigger	YES	No trigger	YES
683 Marulan South Road	26th May 2016	No trigger	YES	No trigger	YES
Pace Residence	26th May 2016	No trigger	YES	No trigger	YES
North West Boundary	19th May 2016	No trigger	YES	No trigger	YES

## Peppertree Quarry Environmental Monitoring Report

North East Boundary	19th May 2016	No trigger	YES	No trigger	YES
683 Marulan South Road	19th May 2016	No trigger	YES	No trigger	YES
Pace Residence	19th May 2016	No trigger	YES	No trigger	YES
North West Boundary	12th May 2016	No trigger	YES	No trigger	YES
North East Boundary	12th May 2016	No trigger	YES	No trigger	YES
683 Marulan South Road	12th May 2016	No trigger	YES	No trigger	YES
Pace Residence	12th May 2016	No trigger	YES	No trigger	YES
North West Boundary	6th May 2016	No trigger	YES	No trigger	YES
North East Boundary	6th May 2016	No trigger	YES	No trigger	YES
683 Marulan South Road	6th May 2016	No trigger	YES	No trigger	YES
Pace Residence	6th May 2016	No trigger	YES	No trigger	YES
North West Boundary	28th April 2016	No trigger	YES	No trigger	YES
North East Boundary	28th April 2016	No trigger	YES	No trigger	YES
683 Marulan South Road	28th April 2016	No trigger	YES	No trigger	YES
Pace Residence	28th April 2016	No trigger	YES	No trigger	YES
North West Boundary	21st April 2016	No trigger	YES	No trigger	YES
North East Boundary	21st April 2016	No trigger	YES	No trigger	YES
683 Marulan South Road	21st April 2016	No trigger	YES	No trigger	YES
Pace Residence	21st April 2016	No trigger	YES	No trigger	YES
North West Boundary	14th April 2016	No trigger	YES	No trigger	YES
North East Boundary	14th April 2016	No trigger	YES	No trigger	YES
683 Marulan South Road	14th April 2016	No trigger	YES	No trigger	YES
Pace Residence	14th April 2016	No trigger	YES	No trigger	YES
North West Boundary	8th April 2016	No trigger	YES	No trigger	YES
North East Boundary	8th April 2016	No trigger	YES	No trigger	YES
683 Marulan South Road	8th April 2016	No trigger	YES	No trigger	YES
Pace Residence	8th April 2016	No trigger	YES	No trigger	YES
North West Boundary	31st March 2016	No trigger	YES	No trigger	YES
North East Boundary	31st March 2016	No trigger	YES	No trigger	YES
683 Marulan South Road	31st March 2016	No trigger	YES	No trigger	YES
Pace Residence	31st March 2016	No trigger	YES	No trigger	YES
North West Boundary	24th March 2016	No trigger	YES	No trigger	YES
North East Boundary	24th March 2016	No trigger	YES	No trigger	YES
683 Marulan South Road	24th March 2016	No trigger	YES	No trigger	YES
Pace Residence	24th March 2016	No trigger	YES	No trigger	YES
North West Boundary	18th March 2016	No trigger	YES	No trigger	YES
North East Boundary	18th March 2016	No trigger	YES	No trigger	YES
683 Marulan South Road	18th March 2016	0.1	YES	111.2	YES
Pace Residence	18th March 2016	No trigger	YES	No trigger	YES
North West Boundary	11th March 2016	No trigger	YES	No trigger	YES
North East Boundary	11th March 2016	No trigger	YES	No trigger	YES
683 Marulan South Road	11th March 2016	No trigger	YES	No trigger	YES
Pace Residence	11th March 2016	No trigger	YES	No trigger	YES

## Peppertree Quarry Environmental Monitoring Report

North West Boundary	3rd March 2016	No trigger	YES	No trigger	YES
North East Boundary	3rd March 2016	No trigger	YES	No trigger	YES
683 Marulan South Road	3rd March 2016	No trigger	YES	No trigger	YES
Pace Residence	3rd March 2016	No trigger	YES	No trigger	YES
North West Boundary	25th February 2016	0.1	YES	102.3	YES
North East Boundary	25th February 2016	No trigger	YES	No trigger	YES
683 Marulan South Road	25th February 2016	No trigger	YES	No trigger	YES
Pace Residence	25th February 2016	No trigger	YES	No trigger	YES
North West Boundary	22nd February 2016	No trigger	YES	No trigger	YES
North East Boundary	22nd February 2016	No trigger	YES	No trigger	YES
683 Marulan South Road	22nd February 2016	No trigger	YES	No trigger	YES
Pace Residence	22nd February 2016	No trigger	YES	No trigger	YES
North West Boundary	11th February 2016	0.05	YES	103.6	YES
North East Boundary	11th February 2016	No trigger	YES	No trigger	YES
683 Marulan South Road	11th February 2016	No trigger	YES	No trigger	YES
Pace Residence	11th February 2016	No trigger	YES	No trigger	YES
North West Boundary	4th February 2016	0.05	YES	104.7	YES
North East Boundary	4th February 2016	No trigger	YES	No trigger	YES
683 Marulan South Road	4th February 2016	No trigger	YES	No trigger	YES
Pace Residence	4th February 2016	No trigger	YES	No trigger	YES
North West Boundary	28th January 2016	0.05	YES	103.6	YES
North East Boundary	28th January 2016	No trigger	YES	No trigger	YES
683 Marulan South Road	28th January 2016	No trigger	YES	No trigger	YES
Pace Residence	28th January 2016	No trigger	YES	No trigger	YES
North West Boundary	21 January 2016	No trigger	YES	No trigger	YES
North East Boundary	21 January 2016	No trigger	YES	No trigger	YES
683 Marulan South Road	21 January 2016	No trigger	YES	No trigger	YES
Pace Residence	21 January 2016	No trigger	YES	No trigger	YES
North West Boundary	16th January 2016	No trigger	YES	No trigger	YES
North East Boundary	16th January 2016	No trigger	YES	No trigger	YES
683 Marulan South Road	16th January 2016	No trigger	YES	No trigger	YES
Pace Residence	16th January 2016	0.1	YES	100.9	YES
North West Boundary	12 January 2016	No trigger	YES	No trigger	YES
North East Boundary	12 January 2016	No trigger	YES	No trigger	YES
683 Marulan South Road	12 January 2016	No trigger	YES	No trigger	YES
Pace Residence	12 January 2016	0.95	YES	5	YES
North West Boundary	18th December 2015	No trigger	YES	No trigger	YES
North East Boundary	18th December 2015	No trigger	YES	No trigger	YES
683 Marulan South Road	18th December 2015	No trigger	YES	No trigger	YES
Pace Residence	18th December 2015	No trigger	YES	No trigger	YES
North West Boundary	10th December 2015	No trigger	YES	No trigger	YES
North East Boundary	10th December 2015	No trigger	YES	No trigger	YES

## Peppertree Quarry Environmental Monitoring Report

683 Marulan South Road	10th December 2015	No trigger	YES	No trigger	YES
Pace Residence	10th December 2015	No trigger	YES	No trigger	YES
North West Boundary	4th December 2015	No trigger	YES	No trigger	YES
North East Boundary	4th December 2015	No trigger	YES	No trigger	YES
683 Marulan South Road	4th December 2015	0.21	YES	97.80	YES
Pace Residence	4th December 2015	0.85	YES	No trigger	YES
North West Boundary	3rd December 2015	No trigger	YES	No trigger	YES
North East Boundary	3rd December 2015	No trigger	YES	No trigger	YES
683 Marulan South Road	3rd December 2015	No trigger	YES	No trigger	YES
Pace Residence	3rd December 2015	No trigger	YES	No trigger	YES
North West Boundary	30th November 2015	No trigger	YES	No trigger	YES
North East Boundary	30th November 2015	No trigger	YES	No trigger	YES
683 Marulan South Road	30th November 2015	No trigger	YES	No trigger	YES
Pace Residence	30th November 2015	1.10	YES	No trigger	YES
North West Boundary	27th November 2015	No trigger	YES	No trigger	YES
North East Boundary	27th November 2015	No trigger	YES	No trigger	YES
683 Marulan South Road	27th November 2015	No trigger	YES	No trigger	YES
Pace Residence	27th November 2015	1.05	YES	No trigger	YES
North West Boundary	20th November 2015	No trigger	YES	No trigger	YES
North East Boundary	20th November 2015	No trigger	YES	No trigger	YES
683 Marulan South Road	20th November 2015	No trigger	YES	No trigger	YES
Pace Residence	20th November 2015	0.85	YES	No trigger	YES
North West Boundary	19th November 2015	No trigger	YES	No trigger	YES
North East Boundary	19th November 2015	No trigger	YES	No trigger	YES
683 Marulan South Road	19th November 2015	No trigger	YES	No trigger	YES
Pace Residence	19th November 2015	No trigger	YES	No trigger	YES
North West Boundary	13th November 2015	No trigger	YES	No trigger	YES
North East Boundary	13th November 2015	No trigger	YES	No trigger	YES
683 Marulan South Road	13th November 2015	00.18	YES	96.0	YES
Pace Residence	13th November 2015	No trigger	YES	No trigger	YES
North West Boundary	9th November 2015	No trigger	YES	No trigger	YES
North East Boundary	9th November 2015	No trigger	YES	No trigger	YES
683 Marulan South Road	9th November 2015	No trigger	YES	No trigger	YES
Pace Residence	9th November 2015	No trigger	YES	No trigger	YES
North West Boundary	5th November 2015	No trigger	YES	No trigger	YES
North East Boundary	5th November 2015	No trigger	YES	No trigger	YES
683 Marulan South Road	5th November 2015	0.37	YES	109	YES
Pace Residence	5th November 2015	1.4	YES	112	YES
North West Boundary	30th October 2015	No trigger	YES	No trigger	YES
North East Boundary	30th October 2015	No trigger	YES	No trigger	YES
683 Marulan South Road	30th October 2015	No trigger	YES	No trigger	YES
Pace Residence	30th October 2015	No trigger	YES	No trigger	YES

## Peppertree Quarry Environmental Monitoring Report

North West Boundary	29th October 2015	No trigger	YES	No trigger	YES
North East Boundary	29th October 2015	No trigger	YES	No trigger	YES
683 Marulan South Road	29th October 2015	No trigger	YES	No trigger	YES
Pace Residence	29th October 2015	0.95	YES	103.8	YES
North West Boundary	23rd October 2015	No trigger	YES	No trigger	YES
North East Boundary	23rd October 2015	No trigger	YES	No trigger	YES
683 Marulan South Road	23rd October 2015	No trigger	YES	No trigger	YES
Pace Residence	23rd October 2015	No trigger	YES	No trigger	YES
North West Boundary	9th October 2015	No trigger	YES	No trigger	YES
North East Boundary	9th October 2015	No trigger	YES	No trigger	YES
683 Marulan South Road	9th October 2015	0.18	YES	96.2	YES
Pace Residence	9th October 2015	0.95	YES	98.3	YES
North West Boundary	28th September2015	1.2	YES	101	YES
North East Boundary	28th September2015	No trigger	YES	No trigger	YES
683 Marulan South Road	28th September2015	0.18	YES	98.6	YES
Pace Residence	28th September2015	1.25	YES	103.2	YES
North West Boundary	23rd September2015	No trigger	YES	No trigger	YES
North East Boundary	23rd September2015	No trigger	YES	No trigger	YES
683 Marulan South Road	23rd September2015	No trigger	YES	No trigger	YES
Pace Residence	23rd September2015	No trigger	YES	No trigger	YES
North West Boundary	21st September2015	No trigger	YES	No trigger	YES
North East Boundary	21st September2015	No trigger	YES	No trigger	YES
683 Marulan South Road	21st September2015	No trigger	YES	No trigger	YES
Pace Residence	21st September2015	1.15	YES	100.9	YES
North West Boundary	16th September2015	No trigger	YES	No trigger	YES
North East Boundary	16th September2015	No trigger	YES	No trigger	YES
683 Marulan South Road	16th September2015	No trigger	YES	No trigger	YES
Pace Residence	16th September2015	1.2	YES	102.5	YES
North West Boundary	11th September2015	No trigger	YES	No trigger	YES
North East Boundary	11th September2015	No trigger	YES	No trigger	YES
683 Marulan South Road	11th September2015	No trigger	YES	No trigger	YES
Pace Residence	11th September2015	No trigger	YES	No trigger	YES
North West Boundary	9th September 2015	No trigger	YES	No trigger	YES
North East Boundary	9th September 2015	No trigger	YES	No trigger	YES
683 Marulan South Road	9th September 2015	0.23	YES	98.7	YES
Pace Residence	9th September 2015	0.95	YES	103.2	YES
North West Boundary	19th August 2015	No trigger	YES	No trigger	YES
North East Boundary	19th August 2015	No trigger	YES	No trigger	YES
683 Marulan South Road	19th August 2015	No trigger	YES	No trigger	YES
Pace Residence	19th August 2015	1.3	YES	103.2	YES
North West Boundary	7th August 2015	1.00	YES	101.8	YES
North East Boundary	7th August 2015	No trigger	YES	No trigger	YES

## Peppertree Quarry Environmental Monitoring Report

683 Marulan South Road	7th August 2015	No trigger	YES	No trigger	YES
Pace Residence	7th August 2015	1.25	YES	101.6	YES
North West Boundary	29th July 2015	No trigger	YES	No trigger	YES
North East Boundary	29th July 2015	No trigger	YES	No trigger	YES
683 Marulan South Road	29th July 2015	0.16	YES	No trigger	YES
Pace Residence	29th July 2015	No trigger	YES	No trigger	YES
North West Boundary	20th July 2015	No trigger	YES	No trigger	YES
North East Boundary	20th July 2015	No trigger	YES	No trigger	YES
683 Marulan South Road	20th July 2015	0.26	YES	100.1	YES
Pace Residence	20th July 2015	1.35	YES	105.5	YES
North West Boundary	15th July 2015	No trigger	YES	No trigger	YES
North East Boundary	15th July 2015	No trigger	YES	No trigger	YES
683 Marulan South Road	15th July 2015	0.30	YES	106	YES
Pace Residence	15th July 2015	1.00	YES	110.7	YES
North West Boundary	12th July 2015	No trigger	YES	No trigger	YES
North East Boundary	12th July 2015	No trigger	YES	No trigger	YES
683 Marulan South Road	12th July 2015	0.18	YES	100.2	YES
Pace Residence	12th July 2015	No trigger	YES	No trigger	YES
North West Boundary	2nd July 2015	No trigger	YES	No trigger	YES
North East Boundary	2nd July 2015	No trigger	YES	No trigger	YES
683 Marulan South Road	2nd July 2015	0.38	YES	102.9	YES
Pace Residence	2nd July 2015	1.65	YES	101.6	YES
North West Boundary	26th June 2015	No trigger	YES	No trigger	YES
North East Boundary	26th June 2015	No trigger	YES	No trigger	YES
683 Marulan South Road	26th June 2015	No trigger	YES	No trigger	YES
Pace Residence	26th June 2015	0.8	YES	103.4	YES
North West Boundary	19th June 2015	No trigger	YES	No trigger	YES
North East Boundary	19th June 2015	No trigger	YES	No trigger	YES
683 Marulan South Road	19th June 2015	0.19	YES	106.7	YES
Pace Residence	19th June 2015	No trigger	YES	No trigger	YES
North West Boundary	16th June 2015	No trigger	YES	No trigger	YES
North East Boundary	16th June 2015	No trigger	YES	No trigger	YES
683 Marulan South Road	16th June 2015	0.19	YES	98.7	YES
Pace Residence	16th June 2015	No trigger	YES	No trigger	YES
North West Boundary	5th June 2015	No trigger	YES	No trigger	YES
North East Boundary	5th June 2015	No trigger	YES	No trigger	YES
683 Marulan South Road	5th June 2015	1.4	YES	104.4	YES
Pace Residence	5th June 2015	0.33	YES	101.5	YES
North West Boundary	28th May 2015	No trigger	YES	No trigger	YES
North East Boundary	28th May 2015	No trigger	YES	No trigger	YES
683 Marulan South Road	28th May 2015	1.95	YES	105	YES
Pace Residence	28th May 2015	0.47	YES	101.6	YES



## Peppertree Quarry Environmental Monitoring Report

North West Boundary	21st May 2015	No trigger	YES	No trigger	YES
North East Boundary	21st May 2015	No trigger	YES	No trigger	YES
683 Marulan South Road	21st May 2015	1.35	YES	108.4	YES
Pace Residence	21st May 2015	0.32	YES	102	YES
North West Boundary	14th May 2015	1.6	YES	109.4	YES
North East Boundary	14th May 2015	No trigger	YES	No trigger	YES
683 Marulan South Road	14th May 2015	1.8	YES	108.4	YES
Pace Residence	14th May 2015	0.25	YES	101.1	YES
North West Boundary	8th May 2015	1.05	YES	108.4	YES
North East Boundary	8th May 2015	No trigger	YES	No trigger	YES
683 Marulan South Road	8th May 2015	1	YES	101.7	YES
Pace Residence	8th May 2015	No trigger	YES	No trigger	YES
North West Boundary	5th May 2015	No trigger	YES	No trigger	YES
North East Boundary	5th May 2015	No trigger	YES	No trigger	YES
683 Marulan South Road	5th May 2015	0.95	YES	105.7	YES
Pace Residence	5th May 2015	0.17	YES	97.9	YES
North West Boundary	1st May 2015	1.75	YES	110	YES
North East Boundary	1st May 2015	No trigger	YES	No trigger	YES
683 Marulan South Road	1st May 2015	1.4	YES	112.3	YES
Pace Residence	1st May 2015	0.38	YES	109	YES
North West Boundary	24th April 2015	1.5	YES	103.3	YES
North East Boundary	24th April 2015	No trigger	YES	No trigger	YES
683 Marulan South Road	24th April 2015	0.16	YES	100.3	YES
Pace Residence	24th April 2015	1.4	YES	103.9	YES
North West Boundary	17th April 2015	No trigger	YES	No trigger	YES
North East Boundary	17th April 2015	No trigger	YES	No trigger	YES
683 Marulan South Road	17th April 2015	No trigger	YES	No trigger	YES
Pace Residence	17th April 2015	No trigger	YES	No trigger	YES
North West Boundary	13th April 2015	No trigger	YES	No trigger	YES
North East Boundary	13th April 2015	No trigger	YES	No trigger	YES
683 Marulan South Road	13th April 2015	No trigger	YES	No trigger	YES
Pace Residence	13th April 2015	1.05	YES	No trigger	YES
North West Boundary	30th March 2015	No trigger	YES	No trigger	YES
North East Boundary	30th March 2015	No trigger	YES	No trigger	YES
683 Marulan South Road	30th March 2015	No trigger	YES	No trigger	YES
Pace Residence	30th March 2015	1.05	YES	No trigger	YES
North West Boundary	27th March 2015	No trigger	YES	No trigger	YES
North East Boundary	27th March 2015	No trigger	YES	113.6	YES
683 Marulan South Road	27th March 2015	No trigger	YES	No trigger	YES
Pace Residence	27th March 2015	No trigger	YES	No trigger	YES
North West Boundary	23rd March 2015	No trigger	YES	No trigger	YES
North East Boundary	23rd March 2015	No trigger	YES	100	YES
683 Marulan South Road	23rd March 2015	No trigger	YES	No trigger	YES

## Peppertree Quarry Environmental Monitoring Report

Pace Residence	23rd March 2015	No trigger	YES	No trigger	YES
North West Boundary	20th March 2015	No trigger	YES	No trigger	YES
North East Boundary	20th March 2015	No trigger	YES	No trigger	YES
683 Marulan South Road	20th March 2015	No trigger	YES	No trigger	YES
Pace Residence	20th March 2015	No trigger	YES	No trigger	YES
North West Boundary	5th March 2015	No trigger	YES	No trigger	YES
North East Boundary	5th March 2015	No trigger	YES	No trigger	YES
683 Marulan South Road	5th March 2015	No trigger	YES	No trigger	YES
Pace Residence	5th March 2015	2.1	YES	No trigger	YES
North West Boundary	25 February 2015	1.55	YES	108.8	YES
North East Boundary	25 February 2015	No trigger	YES	No trigger	YES
683 Marulan South Road	25 February 2015	No trigger	YES	No trigger	YES
Pace Residence	25 February 2015	2.5	YES	105.8	YES
North West Boundary	10th February 2015	No trigger	YES	No trigger	YES
North East Boundary	10th February 2015	No trigger	YES	No trigger	YES
683 Marulan South Road	10th February 2015	No trigger	YES	No trigger	YES
Pace Residence	10th February 2015	1.6	YES	104.2	YES
North West Boundary	29th January 2015	No trigger	YES	No trigger	YES
North East Boundary	29th January 2015	No trigger	YES	No trigger	YES
683 Marulan South Road	29th January 2015	No trigger	YES	No trigger	YES
Pace Residence	29th January 2015	1.1	YES	109	YES
North West Boundary	20 January 2015	No trigger	YES	No trigger	YES
North East Boundary	20 January 2015	No trigger	YES	No trigger	YES
683 Marulan South Road	20 January 2015	No trigger	YES	No trigger	YES
Pace Residence	20 January 2015	1.10	YES	105.3	YES
North West Boundary	8th January 2015	2.00	YES	101.6	YES
North East Boundary	8th January 2015	No trigger	YES	No trigger	YES
683 Marulan South Road	8th January 2015	No trigger	YES	No trigger	YES
Pace Residence	8th January 2015	1.35	YES	102.3	YES

### 3.0 Noise Monitoring

Noise monitoring is conducted as per condition L6 of EPL 13088. The last round of monitoring was conducted in November 2019 with the next round due January 2020.

Sample Period:	November 2019
	Peppertree
Licensee:	Quarry
Licensee Address:	843 Marulan south road, Marulan NSW 2579
EPL No:	13088

**Qualifications related to noise:**

Noise is measured quarterly

The identified noise emission limits apply under meteorological conditions of wind speed 3m/s at 10 meters above ground level, and temp inversion conditions. Monitoring protocols are contained within the Noise and Blasting Management Plan found on this website.

Noise monitoring is measured at the 5 residential receiver locations. – R2, R3, R4, R8, R17 since approval of Modification 4 in August 2016.

**Results for November round of monitoring are still pending**

## Peppertree Quarry Environmental Monitoring Report

### Historical results

<i>Receiver</i>	<i>Date</i>	<i>Site Noise Level Contribution</i>	<i>Operational Criteria (dB(A))</i>
<b>EPL ID</b>		<b>LAeq, 15 minute (dB(A))</b>	<b>daytime</b>
R17	6/8/2019	20	35
R2	6/8/2019	30	35
R3	6/8/2019	23	35
R8	6/8/2019	22	41
R4	6/8/2019	23	35
R17	7/8/2019	32	35
R17	7/8/2019	31	35
R2	7/8/2019	28	35
R2	7/8/2019	31	35
R3	7/8/2019	27	35
R3	7/8/2019	30	35
R8	7/8/2019	29	41
R8	7/8/2019	28	41
R4	7/8/2019	26	35
R4	7/8/2019	26	35

<i>Receiver</i>	<i>Date</i>	<i>Site Noise Level Contribution</i>	<i>Operational Criteria (dB(A))</i>
<b>EPL ID</b>		<b>LAeq, 15 minute (dB(A))</b>	<b>evening</b>
R17	7/8/2019	26	35
R17	7/8/2019	26	35
R3	7/8/2019	20	35
R3	7/8/2019	23	35
R2	7/8/2019	31	35
R2	7/8/2019	31	35
R4	7/8/2019	23	35
R4	7/8/2019	22	35
R8	8/8/2019	34	35
R8	8/8/2019	35	35
R17	8/8/2019	29	35
R17	8/8/2019	28	35
R2	8/8/2019	26	35
R2	8/8/2019	25	35
R3	8/8/2019	22	35
R3	8/8/2019	23	35
R4	8/8/2019	22	35
R4	8/8/2019	22	35
R8	8/8/2019	18	35
R8	8/8/2019	27	35

Peppertree Quarry Environmental Monitoring Report

Receiver	Date	Site Noise Level Contribution	Operational Criteria (dB(A))
EPL ID		LA1, 1 minute (dB(A))	evening
R3	7/8/2019	23	45
R2	7/8/2019	31	45
R2	7/8/2019	30	45
R4	7/8/2019	23	45
R4	7/8/2019	21	45
R8	8/8/2019	39	45
R8	8/8/2019	41	45
R17	8/8/2019	36	45
R17	8/8/2019	31	45
R2	8/8/2019	27	45
R2	8/8/2019	25	45
R3	8/8/2019	22	45
R3	8/8/2019	23	45
R4	8/8/2019	22	45
R4	8/8/2019	22	45
R8	8/8/2019	18	45
R8	8/8/2019	31	45

Receiver	Date	Site Noise Level Contribution	Operational Criteria (dB(A))
EPL ID		LAeq, 15 minute (dB(A))	daytime
R17	7/5/2019	26	35
R17	7/5/2019	28	35
R2	7/5/2019	29	35
R3	7/5/2019	26	35
R2	7/5/2019	33	35
R3	7/5/2019	24	35
R4	7/5/2019	24	35
R8	7/5/2019	24	41
R4	7/5/2019	26	35
R8	7/5/2019	24	41
R8	8/5/2019	35	41
R4	8/5/2019	31	35
R8	8/5/2019	39	41
R4	8/5/2019	33	35
R17	8/5/2019	28	35
R17	8/5/2019	24	35
R2	8/5/2019	33	35
R3	8/5/2019	29	35
R2	8/5/2019	32	35
R3	8/5/2019	30	35

Peppertree Quarry Environmental Monitoring Report

<i>Receiver</i>	<i>Date</i>	<i>Site Noise Level Contribution</i>	<i>Operational Criteria (dB(A))</i>
<b>EPL ID</b>		<b>LAeq, 15 minute (dB(A))</b>	<b>evening</b>
R3	8/5/2019	30	35
R4	8/5/2019	23	35
R8	8/5/2019	23	35
R4	8/5/2019	23	35
R8	8/5/2019	18	35
R4	8/5/2019	24	35
R17	8/5/2019	31	35
R17	8/5/2019	31	35
R3	8/5/2019	20	35
R2	8/5/2019	27	35
R3	9/5/2019	21	35
R2	9/5/2019	27	35
R8	9/5/2019	22	35
R4	9/5/2019	20	35
R8	9/5/2019	21	35
R4	9/5/2019	19	35
R8	9/5/2019	21	35
R17	9/5/2019	33	35
R17	9/5/2019	33	35
R3	9/5/2019	21	35
R2	9/5/2019	26	35
R3	9/5/2019	22	35
R2	9/5/2019	28	35

<b>Receiver</b>	<b>Date</b>	<b>Site Noise Level Contribution</b>	<b>Operational Criteria (dB(A))</b>
<b>EPL ID</b>		<b>LA1, 1 minute (dB(A))</b>	<b>evening</b>
R17	8/5/2019	34	45
R17	8/5/2019	34	45
R3	8/5/2019	20	45
R2	8/5/2019	27	45
R3	8/5/2019	21	45
R2	8/5/2019	27	45
R8	9/5/2019	28	45
R4	9/5/2019	20	45
R8	9/5/2019	28	45
R4	9/5/2019	20	45
R8	9/5/2019	29	45
R17	9/5/2019	38	45
R17	9/5/2019	38	45
R3	9/5/2019	21	45
R2	9/5/2019	26	45
R3	9/5/2019	22	45
R2	9/5/2019	28	45

## Peppertree Quarry Environmental Monitoring Report

<i>Receiver</i>	<i>Date</i>	<i>Site Noise Level Contribution</i>	<i>Operational Criteria (dB(A))</i>
<b>EPL ID</b>		<b>LAeq, 15 minute (dB(A))</b>	<b>daytime</b>
R8	13/2/2019	20.9	41
R8	13/2/2019	22.2	41
R8	13/2/2019	24.1	41
R4	13/2/2019	22.4	35
R8	13/2/2019	29.2	41
R4	13/2/2019	22.6	35
R8	13/2/2019	26	41
R4	13/2/2019	23	35
R4	13/2/2019	22.9	35
R3	13/2/2019	26.4	35
R3	13/2/2019	26.5	35
R17	13/2/2019	20.3	35
R3	13/2/2019	26.3	35
R17	13/2/2019	19.2	35
R3	13/2/2019	29.5	35
R17	13/2/2019	20.5	35
R3	13/2/2019	24.3	35
R3	13/2/2019	23.8	35
R2	13/2/2019	26.8	35
R2	13/2/2019	26.6	35

<i>Receiver</i>	<i>Date</i>	<i>Site Noise Level Contribution</i>	<i>Operational Criteria (dB(A))</i>
<b>EPL ID</b>		<b>LAeq, 15 minute (dB(A))</b>	<b>evening</b>
R17	13/2/2019	23.1	35
R17	13/2/2019	13.7	35
R17	13/2/2019	13.8	35
R3	13/2/2019	26	35
R3	13/2/2019	28.5	35
R3	13/2/2019	23	35
R2	14/2/2019	16.5	35
R2	14/2/2019	13	35
R2	14/2/2019	11.7	35
R4	14/2/2019	23.8	35
R4	14/2/2019	25.9	35
R4	14/2/2019	27.1	35
R8	14/2/2019	31.5	35
R8	14/2/2019	29.6	35
R8	14/2/2019	33.1	35

Peppertree Quarry Environmental Monitoring Report

Receiver	Date	Site Noise Level Contribution	Operational Criteria (dB(A))
EPL ID		LA1, 1 minute (dB(A))	evening
R17	13/2/2019	23.1	45
R17	13/2/2019	13.5	45
R17	13/2/2019	13.6	45
R3	13/2/2019	31.7	45
R3	13/2/2019	32.5	45
R3	14/2/2019	31.8	45
R2	14/2/2019	19.7	45
R2	14/2/2019	13	45
R2	14/2/2019	18.1	45
R4	14/2/2019	24.1	45
R4	14/2/2019	30.6	45
R4	14/2/2019	36.3	45
R8	14/2/2019	38.7	45
R8	14/2/2019	38.1	45
R8	14/2/2019	37.4	45

Receiver	Date	Site Noise Level Contribution	Operational Criteria (dB(A))
EPL ID		LAeq, 15 minute (dB(A))	daytime
R17	27/11/18	22	35
R2	27/11/18	32	35
R3	27/11/18	19	35
R4	27/11/18	33	35
R8	27/11/18	35	41
R17	29/11/18	26	35
R17	29/11/18	24	35
R3	29/11/18	31	35
R3	29/11/18	31	35
R2	29/11/18	27	35
R2	29/11/18	26	35
R8	29/11/18	33	41
R8	29/11/18	29	41
R4	29/11/18	31	35
R4	29/11/18	33	35

Receiver	Date	Site Noise Level Contribution	Operational Criteria (dB(A))
EPL ID		LAeq, 15 minute (dB(A))	evening
R3	29/11/18	30	35
R2	29/11/18	32	35
R8	29/11/18	25	41
R4	29/11/18	33	35
R17	29/11/18	21	35



Peppertree Quarry Environmental Monitoring Report

Receiver	Date	Site Noise Level Contribution	Operational Criteria (dB(A))
EPL ID		LA1, 1 minute (dB(A))	evening
R3	29/11/18	30	45
R3	29/11/18	32	45
R8	29/11/18	25	45
R8	29/11/18	33	45
R17	29/11/18	21	45

Receiver	Date	Site Noise Level Contribution	Operational Criteria (dB(A))
EPL ID		LAeq, 15 minute (dB(A))	daytime
R3	31/7/18	31.2	35
R8	31/7/18	31.0	41
R8	31/7/18	31.0	41
R3	31/7/18	31.5	35
R2	31/7/18	32.0	35
R2	31/7/18	29.7	35
R17	31/7/18	27.7	35
R17	31/7/18	26.1	35
R4	31/7/18	31.9	35
R4	31/7/18	29.6	35
R2	1/8/18	25.9	35
R2	1/8/18	27.1	35
R17	1/8/18	24.9	35
R17	1/8/18	23.8	35
R3	1/8/18	24.1	35
R3	1/8/18	28.8	35
R8	1/8/18	28.7	41
R8	1/8/18	29.3	41
R4	1/8/18	28.2	35
R4	1/8/18	27.3	35

Receiver	Date	Site Noise Level Contribution	Operational Criteria (dB(A))
EPL ID		Leq, 15 minute (dB(A))	evening / night
R2	1/8/18	26.3	35
R2	1/8/18	24.9	35
R17	1/8/18	17.1	35
R17	1/8/18	20.0	35
R3	1/8/18	33.3	35
R3	1/8/18	31.3	35
R8	1/8/18	33.3	35
R8	1/8/18	33.6	35

Peppertree Quarry Environmental Monitoring Report

Receiver	Date	Site Noise Level Contribution	Operational Criteria (dB(A))
EPL ID		Leq, 15 minute (dB(A))	evening / night
R17	1/8/18	15.2	35
R4	1/8/18	31.4	35
R4	1/8/18	27.2	35
R8	1/8/18	14.9	35
R3	2/8/18	30.4	35
R33	2/8/18	26.8	35
R8	2/8/18	31.2	35
R2	2/8/18	18.1	35
R8	2/8/18	29.0	35
R2	2/8/18	23.8	35
R8	2/8/18	31.6	35
R3	2/8/18	33.5	35
R8	2/8/18	31.5	35
R3	2/8/18	35.0	35
R17	2/8/18	12.8	35
R4	2/8/18	32.5	35
R4	2/8/18	32.5	35
R17	2/8/18	13.4	35

Receiver	Date	Site Noise Level Contribution	Operational Criteria (dB(A))
EPL ID		LA1, 1 minute (dB(A))	evening
R3	1/8/18	38.3	45
R3	1/8/18	36.3	45
R8	1/8/18	38.3	45
R8	1/8/18	38.6	45
R17	1/8/18	15.2	45
R4	1/8/18	41.4	45
R4	1/8/18	37.2	45
R8	1/8/18	14.9	45
R3	2/8/18	35.4	45
R3	2/8/18	36.8	45
R8	2/8/18	31.2	45
R2	2/8/18	18.1	45
R8	2/8/18	29.0	45
R2	2/8/18	23.8	45
R8	2/8/18	31.6	45
R3	2/8/18	38.5	45
R8	2/8/18	31.5	45
R3	2/8/18	40.0	45
R17	2/8/18	17.8	45
R4	2/8/18	37.5	45
R4	2/8/18	37.5	45

Peppertree Quarry Environmental Monitoring Report

Receiver	Date	Site Noise Level Contribution	Operational Criteria (dB(A))
R17	2/8/18	18.4	45
EPL ID		LAeq, 15 minute (dB(A))	daytime
R17	1/5/2018	<30	35
R2	1/5/2018	<30	35
R3	1/5/2018	<30	35
R8	1/5/2018	31	41
R4	1/5/2018	31	35
R17	2/5/2018	31	35
R2	2/5/2018	31	35
R3	2/5/2018	<30	35
R8	2/5/2018	33	41
R4	2/5/2018	<30	35

Receiver	Date	Site Noise Level Contribution	Operational Criteria (dB(A))
EPL ID		Leq, 15 minute (dB(A))	evening / night
R17	2/5/2018	<30	35
R17	2/5/2018	32	35
R2	2/5/2018	32	35
R2	3/5/2018	33	35
R8	3/5/2018	<30	35
R8	3/5/2018	<30	35
R4	3/5/2018	<30	35
R4	3/5/2018	<30	35
R3	3/5/2018	<30	35
R3	3/5/2018	<30	35

Receiver	Date	Site Noise Level Contribution	Operational Criteria (dB(A))
EPL ID		LA1, 1 minute (dB(A))	evening
R2	2/5/2018	32	45
R2	3/5/2018	33	45
R8	3/5/2018	<30	45
R8	3/5/2018	<30	45
R17	2/5/2018	<30	45
R17	2/5/2018	32	45
R4	3/5/2018	<30	45
R4	3/5/2018	<30	45
R3	3/5/2018	<30	45
R3	3/5/2018	<30	45

Peppertree Quarry Environmental Monitoring Report

Receiver	Date	Site Noise Level Contribution	Operational Criteria (dB(A))
EPL ID		LAeq, 15 minute (dB(A))	daytime
R2	30/01/2018	26	35
R2	30/01/2018	26	35
R2	31/01/2018	16	35
R2	31/01/2018	18	35
R8	30/01/2018	24	41
R8	30/01/2018	22	41
R8	31/01/2018	25	41
R8	31/01/2018	35	41
R17	30/01/2018	22	35
R17	30/01/2018	24	35
R17	31/01/2018	15	35
R17	31/01/2018	11	35
R4	30/01/2018	19	35
R4	30/01/2018	22	35
R4	31/01/2018	28	35
R4	31/01/2018	29	35
R3	30/01/2018	23	35
R3	30/01/2018	25	35
R3	31/01/2018	31	35
R3	31/01/2018	30	35

Receiver	Date	Site Noise Level Contribution	Operational Criteria (dB(A))
EPL ID		Leq, 15 minute (dB(A))	evening / night
R2	1/02/2018	19	35
R2	1/02/2018	20	35
R8	31/01/2018	30	35
R8	31/01/2018	30	35
R17	1/02/2018	15	35
R17	1/02/2018	18	35
R4	31/01/2018	27	35
R4	31/01/2018	28	35
R3	1/02/2018	24	35
R3	1/02/2018	24	35

Receiver	Date	Site Noise Level Contribution	Operational Criteria (dB(A))
EPL ID		LA1, 1 minute (dB(A))	evening
R2	1/02/2018	19	45
R2	1/02/2018	20	45
R8	31/01/2018	33	45
R8	31/01/2018	33	45
R17	1/02/2018	17	45

Peppertree Quarry Environmental Monitoring Report

R17	1/02/2018	19	45
R4	31/01/2018	28	45
R4	31/01/2018	29	45
R3	1/02/2018	25	45
R3	1/02/2018	26	45

Receiver	Date	Site Noise Level Contribution	Operational Criteria (dB(A))
EPL ID		LAeq, 15 minute (dB(A))	daytime
R17	12-Dec-17	20	35
R17	12-Dec-17	19	35
R2	12-Dec-17	23	35
R2	12-Dec-17	23	35
R3	12-Dec-17	25	35
R3	12-Dec-17	25	35
R4	12-Dec-17	30	35
R4	12-Dec-17	23	35
R17	13-Dec-17	27	35
R2	13-Dec-17	30	35
R3	13-Dec-17	25	35
R8	13-Dec-17	26	35
R4	13-Dec-17	26	35

Receiver	Date	Site Noise Level Contribution	Operational Criteria (dB(A))
EPL ID		Leq, 15 minute (dB(A))	evening / night
R8	12-Dec-2017	21	35
R8	12-Dec-2017	18	35
R8	13-Dec-2017	31	35
R8	13-Dec-2017	29	35
R4	13-Dec-2017	27	35
R4	13-Dec-17	27	35
R3	13-Dec-17	30	35
R3	13-Dec-17	30	35
R3	14-Dec-17	29	35
R3	14-Dec-17	29	35
R2	14-Dec-17	30	35
R2	14-Dec-17	28	35
R17	14-Dec-17	22	35
R17	14-Dec-17	21	35
R17	14-Dec-17	20	35
R8	14-Dec-17	26	35
R8	14-Dec-17	28	35

## Peppertree Quarry Environmental Monitoring Report

Receiver	Date	Site Noise Level Contribution	Operational Criteria (dB(A))
EPL ID		LA1, 1 minute (dB(A))	evening
R4	13-Dec-17	31	45
R4	13-Dec-17	34	45
R3	13-Dec-17	34	45
R3	13-Dec-17	33	45
R3	14-Dec-17	33	45
R3	14-Dec-17	34	45
R2	14-Dec-17	32	45
R2	14-Dec-17	26	45
R17	14-Dec-17	25	45
R17	14-Dec-17	24	45
R17	14-Dec-17	30	45
R8	14-Dec-17	32	45
R8	14-Dec-17	31	45

Receiver	Date	Predicted Site Noise Level Contribution	Operational Criteria (dB(A))
EPL ID		LAeq, 15 minute (dB(A))	daytime
R8	11 <sup>th</sup> July 2017	27	41
R4	11 <sup>th</sup> July 2017	27	35
R17	11 <sup>th</sup> July 2017	16	35
R2	11 <sup>th</sup> July 2017	25	35
R3	11 <sup>th</sup> July 2017	29	35
R8	12 <sup>th</sup> July 2017	28	41
R4	12 <sup>th</sup> July 2017	28	35
R17	12 <sup>th</sup> July 2017	23	35
R2	12 <sup>th</sup> July 2017	33	35
R3	12 <sup>th</sup> July 2017	38*	35
R3	12 <sup>th</sup> July 2017	43*	35
R3	12 <sup>th</sup> July 2017	26	35

Receiver	Date	Site Noise Level Contribution	Operational Criteria (dB(A))
EPL ID		Leq, 15 minute (dB(A))	evening
R8	13 <sup>th</sup> July 2017	31	35
R8	13 <sup>th</sup> July 2017	32	35
R4	13 <sup>th</sup> July 2017	35	35
R4	13 <sup>th</sup> July 2017	27	35
R4	13 <sup>th</sup> July 2017	35	35
R17	12 <sup>th</sup> July 2017	16	35
R17	12 <sup>th</sup> July 2017	18	35
R2	13 <sup>th</sup> June 2017	27	35
R2	13 <sup>th</sup> June 2017	29	35

## Peppertree Quarry Environmental Monitoring Report

R3	12 <sup>th</sup> July 2017	32	35
R3	12 <sup>th</sup> July 2017	33	35
R3	12 <sup>th</sup> July 2017	33	35
R3	13 <sup>th</sup> July 2017	34	35

Receiver	Date	Site Noise Level Contribution	Operational Criteria (dB(A))
EPL ID		LA1, 1 minute (dB(A))	evening
R8	12 <sup>th</sup> July 2017	35	45
R8	12 <sup>th</sup> July 2017	36	45
R4	13 <sup>th</sup> July 2017	31	45
R4	13 <sup>th</sup> July 2017	39	45
R4	13 <sup>th</sup> July 2017	39	45
R17	12 <sup>th</sup> July 2017	20	45
R17	12 <sup>th</sup> July 2017	22	45
R2	13 <sup>th</sup> July 2017	31	45
R2	13 <sup>th</sup> July 2017	33	45
R3	12 <sup>th</sup> July 2017	36	45
R3	12 <sup>th</sup> July 2017	37	45
R3	13 <sup>th</sup> July 2017	39	45
R3	13 <sup>th</sup> July 2017	38	45

Note \*two results were over the operational criteria however inversion conditions were in place and therefore the readings are not valid.

Receiver	Date	Predicted Site Noise Level Contribution	Operational Criteria (dB(A))
----------	------	---	------------------------------

## Peppertree Quarry Environmental Monitoring Report

EPL ID		LAeq, 15 minute (dB(A))	daytime
R8	16 <sup>th</sup> May 2017	16	41
R4	16 <sup>th</sup> May 2017	26	35
R17	16 <sup>th</sup> May 2017	17	35
R2	16 <sup>th</sup> May 2017	26	35
R3	16 <sup>th</sup> May 2017	21	35
R8	17 <sup>TH</sup> May 2017	19	41
R8	17 <sup>TH</sup> May 2017	17	41
R4	17 <sup>TH</sup> May 2017	17	35
R4	17 <sup>TH</sup> May 2017	17	35
R17	17 <sup>TH</sup> May 2017	11	35
R17	17 <sup>TH</sup> May 2017	9	35
R2	17 <sup>TH</sup> May 2017	24	35
R2	17 <sup>TH</sup> May 2017	23	35
R3	17 <sup>TH</sup> May 2017	27	35
R3	17 <sup>TH</sup> May 2017	19	35

Receiver	Date	Site Noise Level Contribution	Operational Criteria (dB(A))
EPL ID		LA1, 1 minute (dB(A))	evening
R8	18 <sup>TH</sup> May 2017	35	45
R8	18 <sup>TH</sup> May 2017	34	45
R4	18 <sup>TH</sup> May 2017	26	45
R4	18 <sup>TH</sup> May 2017	27	45
R17	18 <sup>TH</sup> May 2017	13	45
R17	18 <sup>TH</sup> May 2017	14	45
R2	18 <sup>TH</sup> May 2017	27	45
R2	18 <sup>TH</sup> May 2017	28	45
R3	18 <sup>TH</sup> May 2017	42	45
R3	18 <sup>TH</sup> May 2017	25	45

Receiver	Date	Site Noise Level Contribution	Operational Criteria (dB(A))
EPL ID		Leq, 15 minute (dB(A))	evening
R8	17 <sup>TH</sup> May 2017	33	35
R8	17 <sup>TH</sup> May 2017	32	35
R4	17 <sup>TH</sup> May 2017	26	35
R4	17 <sup>TH</sup> May 2017	27	35
R17	18 <sup>TH</sup> May 2017	13	35
R17	18 <sup>TH</sup> May 2017	14	35
R2	18 <sup>TH</sup> May 2017	27	35
R2	18 <sup>TH</sup> May 2017	28	35
R3	18 <sup>TH</sup> May 2017	33	35
R3	18 <sup>TH</sup> May 2017	24	35



Peppertree Quarry Environmental Monitoring Report

Receiver	Date	Predicted Site Noise Level Contribution	Operational Criteria (dB(A))
EPL ID		LAeq, 15 minute (dB(A))	daytime
R17	9th February 2017	23	35
R17	9th February 2017	22	35
R3	9th February 2017	28	35
R3	9th February 2017	29	35
R2	9th February 2017	27	35
R2	9th February 2017	27	35
R4	9th February 2017	22	35
R4	9th February 2017	21	35
R17	9th February 2017	21	35
R8	9th February 2017	26	41
R8	9th February 2017	27	41
R17	9th February 2017	20	35

Receiver	Date	Site Noise Level Contribution	Operational Criteria (dB(A))
EPL ID		Leq, 15 minute (dB(A))	evening
R3	10th February 2017	29	35
R3	10th February 2017	30	35
R2	10th February 2017	26	35
R2	10th February 2017	25	35
R17	9th February 2017	16	35
R17	9th February 2017	17	35
R17	9th February 2017	19	35
R17	9th February 2017	23	35
R17	9th February 2017	24	35
R17	9th February 2017	22	35
R17	9th February 2017	21	35
R4	10th February 2017	26	35

## Peppertree Quarry Environmental Monitoring Report

R4	10th February 2017	27	35
R4	10th February 2017	27	35
R17	10th February 2017	23	35

Receiver	Date	Site Noise Level Contribution	Operational Criteria (dB(A))
EPL ID		LA1, 1 minute (dB(A))	evening
R4	9th February 2017	26	45
R4	9th February 2017	27	45
R4	9th February 2017	27	45
R17	9th February 2017	23	45
R17	9th February 2017	23	45
R17	9th February 2017	26	45
R17	9th February 2017	26	45
R17	9th February 2017	33	45
R17	9th February 2017	34	45
R17	9th February 2017	32	45
R17	9th February 2017	26	45
R3	9th February 2017	34	45
R2	9th February 2017	35	45
R2	9th February 2017	31	45
R2	9th February 2017	30	45

Receiver	Date	Predicted Site Noise Level Contribution	Operational Criteria (dB(A))
EPL ID		LAeq, 15 minute (dB(A))	daytime
R17	26th October 2016	17	35
R17	26th October 2016	15	35
R3	26th October 2016	21	35
R3	26th October 2016	22	35
R2	26th October 2016	28	35
R2	26th October 2016	30	35
R4	26th October 2016	25	35
R4	26th October 2016	25	35
R8	26th October 2016	26	41
R8	26th October 2016	28	41
R3	25th October 2016	27	35
R2	25th October 2016	31	35
R17	25th October 2016	23	35
R4	25th October 2016	22	35
R8	25th October 2016	26	41

## Peppertree Quarry Environmental Monitoring Report

Receiver	Date	Site Noise Level Contribution	Operational Criteria (dB(A))
EPL ID		LA1, 1 minute (dB(A))	evening
R17	26 <sup>th</sup> October 2016	26	45
R17	26 <sup>th</sup> October 2016	25	45
R3	26 <sup>th</sup> October 2016	28	45
R3	27 <sup>th</sup> October 2016	28	45
R2	27 <sup>th</sup> October 2016	31	45
R2	27 <sup>th</sup> October 2016	31	45
R4	27 <sup>th</sup> October 2016	26	45
R4	27 <sup>th</sup> October 2016	26	45
R8	27 <sup>th</sup> October 2016	24	45
R8	27 <sup>th</sup> October 2016	34	45
R17	27 <sup>th</sup> October 2016	23	45
R17	27 <sup>th</sup> October 2016	22	45

Receiver	Date	Site Noise Level Contribution	Operational Criteria (dB(A))
EPL ID		LAeq, 15 minute (dB(A))	evening
R17	26 <sup>th</sup> October 2016	26	35
R17	26 <sup>th</sup> October 2016	25	35
R3	26 <sup>th</sup> October 2016	28	35
R3	27 <sup>th</sup> October 2016	28	35
R2	27 <sup>th</sup> October 2016	31	35
R2	27 <sup>th</sup> October 2016	31	35
R4	27 <sup>th</sup> October 2016	26	35
R4	27 <sup>th</sup> October 2016	26	35
R8	27 <sup>th</sup> October 2016	24	35
R8	27 <sup>th</sup> October 2016	25	35
R17	27 <sup>th</sup> October 2016	23	35
R17	27 <sup>th</sup> October 2016	22	35

Receiver	Date	Predicted Site Noise Level Contribution	Operational Criteria (dB(A))
EPL ID		LAeq, 15 minute (dB(A))	daytime
16	16 <sup>th</sup> August 2016	22	41
6	16 <sup>th</sup> August 2016	29	35
2	16 <sup>th</sup> August 2016	24	39
5	16 <sup>th</sup> August 2016	32	35
16	17 <sup>th</sup> August 2016	25	41
6	17 <sup>th</sup> August 2016	30	35
2	17 <sup>th</sup> August 2016	25	39
5	17 <sup>th</sup> August 2016	30	35
16	17 <sup>th</sup> August 2016	25	41

## Peppertree Quarry Environmental Monitoring Report

6	17th August 2016	31	35
2	17th August 2016	26	39
5	17th August 2016	32	35

Receiver	Date	Site Noise Level Contribution	Operational Criteria (dB(A))
EPL ID		LA1, 1 minute (dB(A))	evening
5	17 <sup>th</sup> August 2016	34	45
5	17 <sup>th</sup> August 2016	33	45
5	18 <sup>th</sup> August 2016	21	45
5	18 <sup>th</sup> August 2016	20	45
6	17 <sup>th</sup> August 2016	34	45
6	17 <sup>th</sup> August 2016	34	45

Receiver	Date	Site Noise Level Contribution	Operational Criteria (dB(A))
EPL ID		LAeq, 15 minute (dB(A))	evening
2	18th August 2016	32	35
5	18th August 2016	21	35
2	18th August 2016	33	35
2	18th August 2016	24	35
5	18th August 2016	20	35
6	17th August 2016	34	35
5	17th August 2016	34	35
6	17th August 2016	34	35
5	17th August 2016	33	35

Receiver	Date	Predicted Site Noise Level Contribution	Operational Criteria (dB(A))
EPL ID		LAeq, 15 minute (dB(A))	daytime
16	10th May 2016	30	41
6	10th May 2016	31	35
2	10th May 2016	31	39
5	10th May 2016	26	35
16	10th May 2016	23	41
6	11th May 2016	33	35
2	11th May 2016	28	39
5	11th May 2016	25	35
16	11th May 2016	23	41
6	11th May 2016	32	35
2	11th May 2016	23	39
5	11th May 2016	26	35
16	11th May 2016	20	41

## Peppertree Quarry Environmental Monitoring Report

Receiver	Date	Site Noise Level Contribution	Operational Criteria (dB(A))
EPL ID		LA1, 1 minute (dB(A))	evening
2	12 <sup>th</sup> May 2016	28	45
5	12 <sup>th</sup> May 2016	24	45
5	12 <sup>th</sup> May 2016	30	45
16	12 <sup>th</sup> May 2016	26	45
6	12 <sup>th</sup> May 2016	26	45

Receiver	Date	Site Noise Level Contribution	Operational Criteria (dB(A))
EPL ID		Leq, 15 minute (dB(A))	evening
2	11th may 2016	28	35
16	11th may 2016	24	35
5	12th May 2016	26	35
6	12th May 2016	30	35
5	12th May 2016	26	35

Receiver	Date	Predicted Site Noise Level Contribution	Operational Criteria (dB(A))
EPL ID		LAeq, 15 minute (dB(A))	daytime
16	2 <sup>nd</sup> February 2016	24	41
6	2 <sup>nd</sup> February 2016	22	35
2	2 <sup>nd</sup> February 2016	22	39
5	2 <sup>nd</sup> February 2016	21	35
16	3 <sup>rd</sup> February 2016	25	41
6	3 <sup>rd</sup> February 2016	24	35
2	3 <sup>rd</sup> February 2016	17	39
5	3 <sup>rd</sup> February 2016	19	35
16	3 <sup>rd</sup> February 2016	31	41
6	3 <sup>rd</sup> February 2016	28	35
2	3 <sup>rd</sup> February 2016	20	39
5	3 <sup>rd</sup> February 2016	18	35

Receiver	Date	Site Noise Level Contribution	Operational Criteria (dB(A))
EPL ID		Leq, 15 minute (dB(A))	evening
2	3 <sup>rd</sup> February 2016	27	35
5	3 <sup>rd</sup> February 2016	34	35
2	3 <sup>rd</sup> February 2016	26	35
5	3 <sup>rd</sup> February 2016	33	35
6	4 <sup>th</sup> February 2016	28	35
5	4 <sup>th</sup> February 2016	31	35

## Peppertree Quarry Environmental Monitoring Report

Receiver	Date	Site Noise Level Contribution	Operational Criteria (dB(A))
EPL ID		LA1, 1 minute (dB(A))	evening
2	4th February 2016	29	45
2	4th February 2016	28	45
5	4th February 2016	31	45
5	4th February 2016	38	45
5	4th February 2016	36	45
6	4th February 2016	29	45

Receiver	Date	Predicted Site Noise Level Contribution	Operational Criteria (dB(A))
EPL ID		LAeq, 15 minute (dB(A))	daytime
16	20 <sup>th</sup> October 2015	<32	41
6	20 <sup>th</sup> October 2015	<30	35
2	20 <sup>th</sup> October 2015	<30	39
5	20 <sup>th</sup> October 2015	<30	35
16	21 <sup>st</sup> October 2015 <sup>th</sup>	<31	41
6	21 <sup>st</sup> October 2015 <sup>th</sup>	<30	35
2	21 <sup>st</sup> October 2015 <sup>th</sup>	<30	39
5	21 <sup>st</sup> October 2015 <sup>th</sup>	<30	35

Receiver	Date	Site Noise Level Contribution	Operational Criteria (dB(A))
EPL ID		Leq, 15 minute (dB(A))	evening
2	21 <sup>st</sup> October 2015 <sup>th</sup>	<30	35
5	21 <sup>st</sup> October 2015 <sup>th</sup>	31	35
2	21 <sup>st</sup> October 2015 <sup>th</sup>	<33	35

Receiver	Date	Site Noise Level Contribution	Operational Criteria (dB(A))
EPL ID		LA1, 1 minute (dB(A))	evening
2	21 <sup>st</sup> October 2015 <sup>th</sup>	<30	45
5	21 <sup>st</sup> October 2015 <sup>th</sup>	<33	45
2	21 <sup>st</sup> October 2015 <sup>th</sup>	<35	45

Receiver	Date	Predicted Site Noise Level Contribution	Operational Criteria (dB(A))
EPL ID		LAeq, 15 minute (dB(A))	daytime
16	21 <sup>st</sup> July 2015	<22	41
6	21 <sup>st</sup> July 2015	<33	35
2	21 <sup>st</sup> July 2015	<27	39
5	21 <sup>st</sup> July 2015	<26	35
16	22 <sup>nd</sup> July 2015	<27	41

## Peppertree Quarry Environmental Monitoring Report

16	22 <sup>nd</sup> July 2015	<29	41
2	22 <sup>nd</sup> July 2015	<35	39
2	22 <sup>nd</sup> July 2015	<32	39
2	22 <sup>nd</sup> July 2015	<28	39
6	22 <sup>nd</sup> July 2015	<30	35
6	22 <sup>nd</sup> July 2015	<31	35
5	22 <sup>nd</sup> July 2015	<22	35
5	22 <sup>nd</sup> July 2015	<22	35

Receiver	Date	Site Noise Level Contribution	Operational Criteria (dB(A))
<b>EPL ID</b>		<b>Leq, 15 minute (dB(A))</b>	<b>evening</b>
6	22 <sup>nd</sup> July 2015	<33	35
6	23 <sup>rd</sup> July 2015	<25	35
5	23 <sup>rd</sup> July 2015	<30	35
16	23 <sup>rd</sup> July 2015	<31	35
16	23 <sup>rd</sup> July 2015	<30	35

Receiver	Date	Site Noise Level Contribution	Operational Criteria (dB(A))
<b>EPL ID</b>		<b>LA1, 1 minute (dB(A))</b>	<b>evening</b>
6	23 <sup>rd</sup> July 2015	<33	45
6	23 <sup>rd</sup> July 2015	<25	45
5	23 <sup>rd</sup> July 2015	<35	45
16	23 <sup>rd</sup> July 2015	<36	45
16	23 <sup>rd</sup> July 2015	<36	45

Receiver	Date	Predicted Site Noise Level Contribution	Operational Criteria (dB(A))
<b>EPL ID</b>		<b>LAeq, 15 minute (dB(A))</b>	<b>daytime</b>
16	8 <sup>th</sup> April 2015	<30	41
6	8 <sup>th</sup> April 2015	<30	35
2	8 <sup>th</sup> April 2015	<30	39
5	8 <sup>th</sup> April 2015	<30	35
16	9 <sup>th</sup> April 2015	<30	41
16	9 <sup>th</sup> April 2015	<30	41
2	9 <sup>th</sup> April 2015	<30	39
2	9 <sup>th</sup> April 2015	<30	39
6	9 <sup>th</sup> April 2015	<30	35
5	9 <sup>th</sup> April 2015	<30	35
Receiver	Date	Site Noise Level Contribution	Operational Criteria (dB(A))
<b>EPL ID</b>		<b>Leq, 15 minute (dB(A))</b>	<b>evening</b>
2	10 <sup>th</sup> April 2015	<30	35
5	10 <sup>th</sup> April 2015	31	35
6	10 <sup>th</sup> April 2015	<30	35
16	10 <sup>th</sup> April 2015	<30	35

Receiver	Date	Site Noise Level Contribution	Operational Criteria (dB(A))
----------	------	-------------------------------	------------------------------

## Peppertree Quarry Environmental Monitoring Report

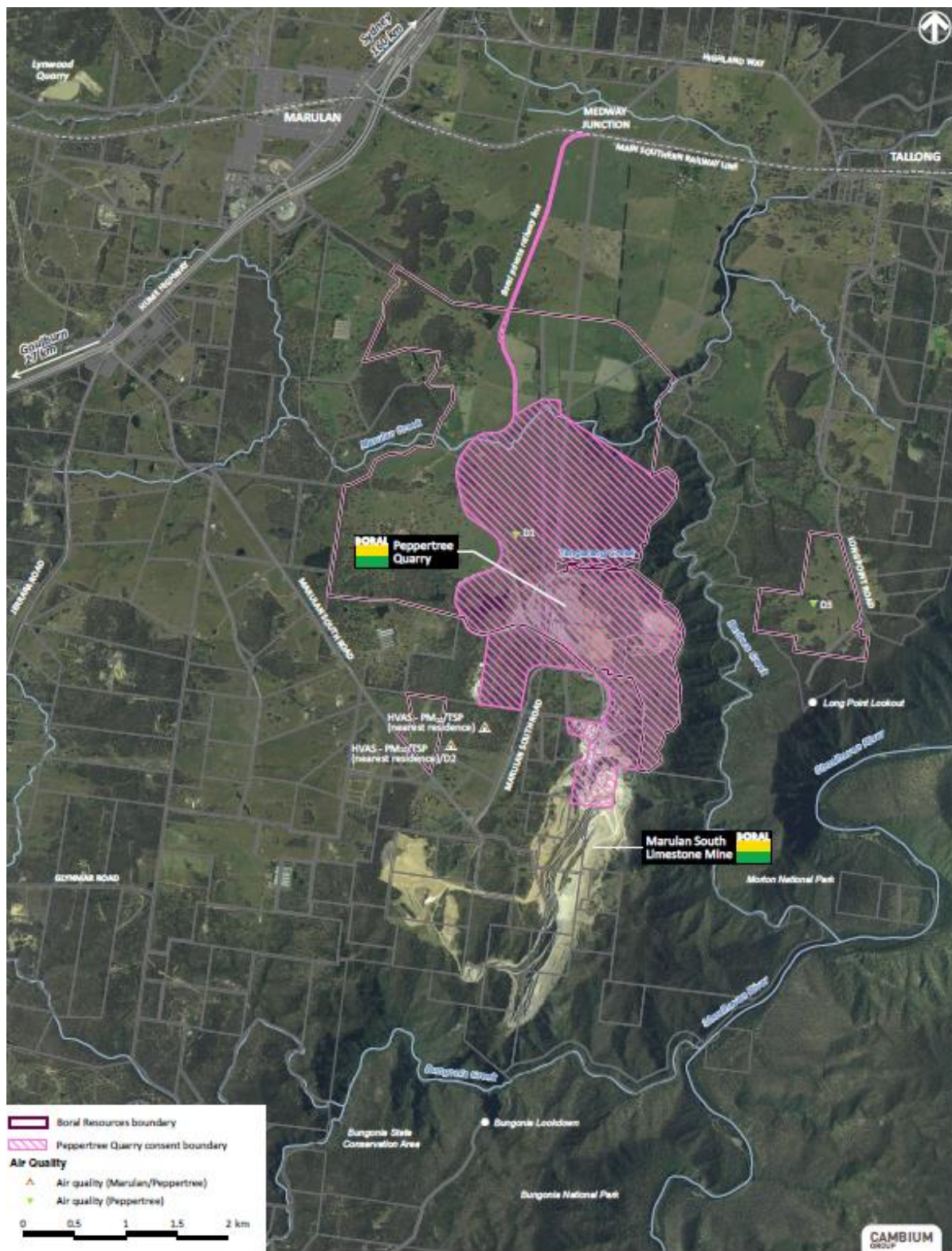
<b>EPL ID</b>		<b>LA1, 1 minute (dB(A))</b>	<b>evening</b>
2	10 <sup>th</sup> April 2015	<30	45
5	10 <sup>th</sup> April 2015	39	45
6	10 <sup>th</sup> April 2015	<30	45
16	10 <sup>th</sup> April 2015	<30	45

<b>Receiver</b>	<b>Date</b>	<b>Site Noise Level Contribution</b>	<b>Operational Criteria (dB(A))</b>
<b>EPL ID</b>		<b>LAeq, 15 minute (dB(A))</b>	<b>daytime</b>
16	3rd February 2015	28	41
6	3rd February 2015	25	35
2	3rd February 2015	25	39
5	3rd February 2015	27	35
2	4 <sup>th</sup> February 2015	29	39
2	4 <sup>th</sup> February 2015	29	39
5	4 <sup>th</sup> February 2015	27	35
5	4 <sup>th</sup> February 2015	27	35
6	4 <sup>th</sup> February 2015	<25	35
6	4 <sup>th</sup> February 2015	<25	35
16	4 <sup>th</sup> February 2015	32	41
16	4 <sup>th</sup> February 2015	32	41
<b>Receiver</b>	<b>Date</b>	<b>Site Noise Level Contribution</b>	<b>Operational Criteria (dB(A))</b>
<b>EPL ID</b>		<b>Leq, 15 minute (dB(A))</b>	<b>evening</b>
2	4th February 2015	28	35
2	4th February 2015	25	35
5	5th February 2015	<25	35
5	5th February 2015	<25	35
6	5th February 2015	<25	35
6	5th February 2015	<25	35
16	4 <sup>th</sup> February 2015	28	35
16	5 <sup>th</sup> February 2015	29	35

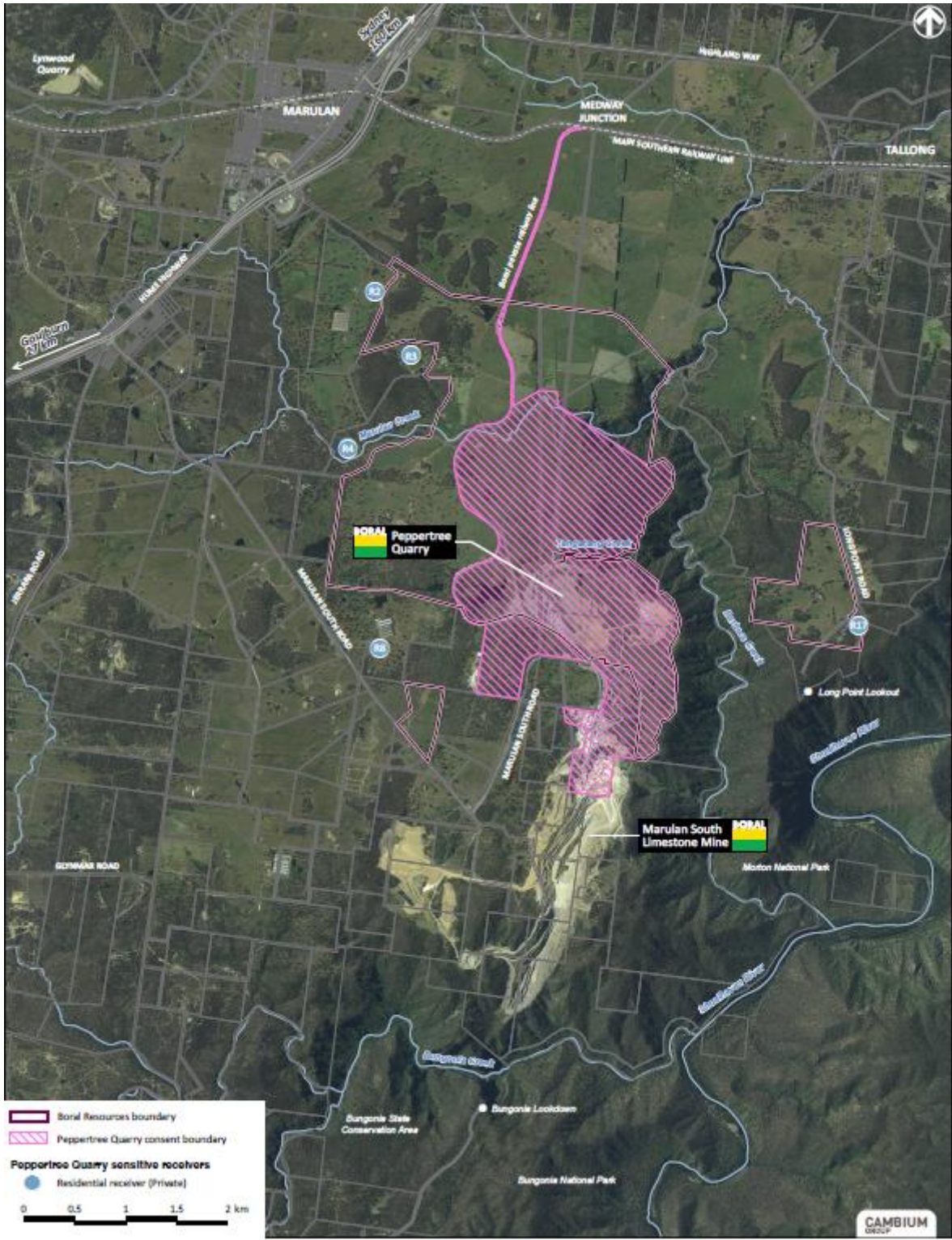


## Peppertree Quarry Monitoring Locations.

### Deposited Dust, TSP and PM10 Monitoring Locations



Noise Monitoring Locations



Blast Monitoring Locations

